

Datasheet for ABIN940566
anti-SPON2 antibody (Internal Region)[Go to Product page](#)

1 Image

Overview

Quantity:	100 µg
Target:	SPON2
Binding Specificity:	Internal Region
Reactivity:	Human, Mouse, Rat
Host:	Goat
Clonality:	Polyclonal
Conjugate:	This SPON2 antibody is un-conjugated
Application:	Western Blotting (WB), ELISA, Immunohistochemistry (IHC)

Product Details

Purpose:	SPON2 (301-315)
Immunogen:	Peptide with sequence C-RTRYVRVQPANNGSP, from the internal region (near C Terminus) of the protein sequence according to NP_036577.1.
Sequence:	RTRYVRVQPA NNGSP
Isotype:	IgG
Specificity:	Reported variants represent identical protein: NP_036577.1, NP_001121797.1, NP_001185950.1
Cross-Reactivity:	Dog, Human, Mouse, Rat
Purification:	Purified from goat serum by ammonium sulphate precipitation followed by antigen affinity chromatography using the immunizing peptide.
Grade:	Verified

Target Details

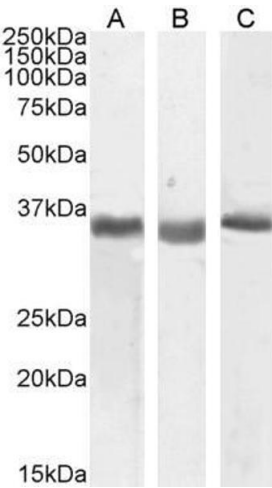
Target:	SPON2
Alternative Name:	SPON2 (SPON2 Products)
Background:	SPON2, spondin 2, extracellular matrix protein, DIL-1, DIL1, DKFZp686G21139, FLJ16313, FLJ22401, FLJ34460, M-SPONDIN, MINDIN, differentially expressed in cancerous and non-cancerous lung cells 1, spondin-2
Gene ID:	10417, 100689, 171569
NCBI Accession:	NP_036577

Application Details

Application Notes:	Immunohistochemistry: Paraffin embedded Human Tonsil. Recommended concentration: 5 µg/mL. Western Blot: Approx 35-36 kDa band observed in Human, Mouse and Rat Kidney lysates, and in preliminary testing of A549 cell lysates (calculated MW of 35.8 kDa according to Human NP_036577.2, and 36.0 kDa according to Mouse NP_598664.3 and Rat NP_612542.1). Peptide ELISA: antibody detection limit dilution 1:16000.
Restrictions:	For Research Use only

Handling

Format:	Liquid
Concentration:	0.5 mg/mL
Buffer:	Supplied at 0.5 mg/mL in Tris saline, 0.02 % sodium azide, pH 7.3 with 0.5 % bovine serum albumin.
Preservative:	Sodium azide
Precaution of Use:	This product contains Sodium azide: a POISONOUS AND HAZARDOUS SUBSTANCE which should be handled by trained staff only.
Handling Advice:	Minimize freezing and thawing.
Storage:	-20 °C
Storage Comment:	Aliquot and store at -20°C, with minimal freeze/thawing. A working aliquot may be refrigerated at 4°C for a few weeks and still remain viable.



Western Blotting

Image 1. ABIN940566 (0.5µg/ml) staining of Human (A), Mouse (B) and Rat (C) Kidney lysate (35µg protein in RIPA buffer). Detected by chemiluminescence.