

Datasheet for ABIN940568
anti-TERT antibody (AA 597-611)

3 Images

[Go to Product page](#)

Overview

Quantity:	100 µg
Target:	TERT
Binding Specificity:	AA 597-611
Reactivity:	Human
Host:	Goat
Clonality:	Polyclonal
Conjugate:	This TERT antibody is un-conjugated
Application:	ELISA, Flow Cytometry (FACS), Immunofluorescence (IF)

Product Details

Purpose:	TERT (aa597-611)
Immunogen:	Peptide with sequence C-QLRELSEAEVRQHRE, from the internal region of the protein sequence according to NP_937983.2, NP_001180305.1.
Sequence:	QLRELSEAEV RQHRE
Isotype:	IgG
Specificity:	This antibody is expected to recognize both reported isoforms (NP_937983.2, (NP_001180305.1).
Cross-Reactivity:	Human
Purification:	Purified from goat serum by ammonium sulphate precipitation followed by antigen affinity chromatography using the immunizing peptide.

Product Details

Grade: Verified

Target Details

Target:	TERT
Alternative Name:	TERT (TERT Products)
Background:	TERT, telomerase reverse transcriptase, EST2, TCS1, TP2, TRT, hEST2, telomerase catalytic subunit, telomerase-associated protein 2
Gene ID:	7015
NCBI Accession:	NP_937983 , NP_001180305
Pathways:	Telomere Maintenance

Application Details

Application Notes:	Western Blot: Preliminary testing showed a band at approx 125 kDa in lysates of cell lines A549 and CaCo-2 after 1 µg/mL antibody staining (calculated MW of 127 kDa according to NP_937983.2). Primary incubation 1 hour at room temperature. Peptide ELISA: antibody detection limit dilution 1:32000.
Comment:	Immunofluorescence: Strong expression of the protein seen in the nuclei and cytoplasm of HeLa cells. Recommended concentration: 10µg/ml. Flow Cytometry: Flow cytometric analysis of HeLa cells. Recommended concentration
Restrictions:	For Research Use only

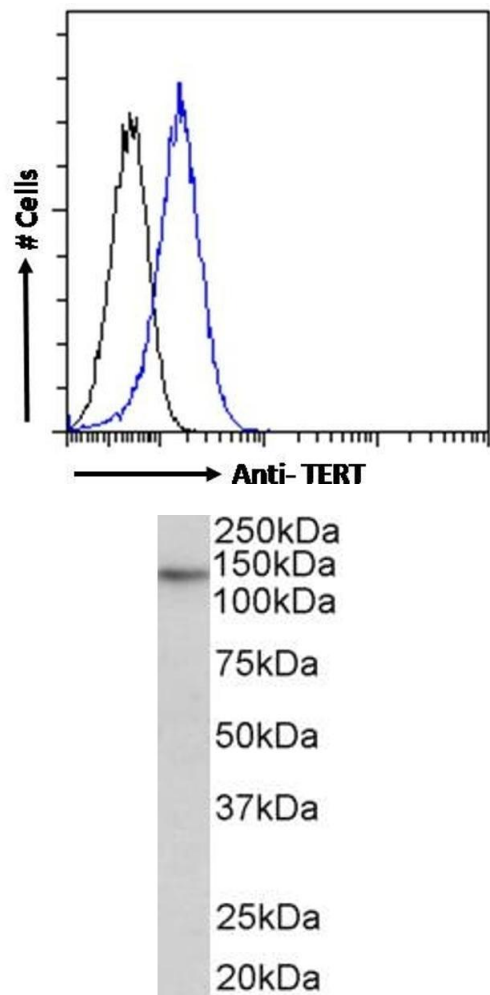
Handling

Format:	Liquid
Concentration:	0.5 mg/mL
Buffer:	Supplied at 0.5 mg/mL in Tris saline, 0.02 % sodium azide, pH 7.3 with 0.5 % bovine serum albumin.
Preservative:	Sodium azide
Precaution of Use:	This product contains Sodium azide: a POISONOUS AND HAZARDOUS SUBSTANCE which should be handled by trained staff only.
Handling Advice:	Minimize freezing and thawing.

Handling

Storage:	-20 °C
Storage Comment:	Aliquot and store at -20°C, with minimal freeze/thawing. A working aliquot may be refrigerated at 4°C for a few weeks and still remain viable.

Images

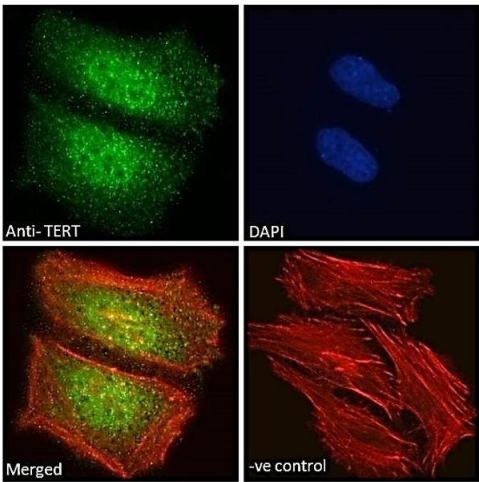


Flow Cytometry

Image 1. ABIN940568 Flow cytometric analysis of paraformaldehyde fixed HeLa cells (blue line), permeabilized with 0.5 % Triton. Primary incubation 1hr (10 µg/mL) followed by Alexa Fluor 488 secondary antibody (1 µg/mL). IgG control: Unimmunized goat IgG (black line) fol

Western Blotting

Image 2. ABIN940568 (0.5µg/ml) staining of Human Skeletal Muscle lysate (35µg protein in RIPA buffer). Detected by chemiluminescence.



Immunofluorescence

Image 3. ABIN940568 Immunofluorescence analysis of paraformaldehyde fixed HeLa cells, permeabilized with 0.15 % Triton. Primary incubation 1hr (10 µg/mL) followed by Alexa Fluor 488 secondary antibody (2 µg/mL), showing nuclear and cytoplasmic staining. Actin filaments