



[Go to Product page](#)

Datasheet for ABIN940570

anti-TSPY-Like 2 antibody (AA 441-454)

2 Images

Overview

| | |
|----------------------|--|
| Quantity: | 100 µg |
| Target: | TSPY-Like 2 (TSPYL2) |
| Binding Specificity: | AA 441-454 |
| Reactivity: | Human |
| Host: | Goat |
| Clonality: | Polyclonal |
| Conjugate: | This TSPY-Like 2 antibody is un-conjugated |
| Application: | Western Blotting (WB), ELISA, Immunohistochemistry (IHC) |

Product Details

| | |
|-------------------|---|
| Purpose: | TSPYL2 (aa441-454) |
| Immunogen: | Peptide with sequence C-SDIDETIHDIKISD, from the internal region of the protein sequence according to NP_071400.1. |
| Sequence: | SDIDETIHDI KISD |
| Isotype: | IgG |
| Cross-Reactivity: | Human |
| Purification: | Purified from goat serum by ammonium sulphate precipitation followed by antigen affinity chromatography using the immunizing peptide. |
| Grade: | Verified |

Target Details

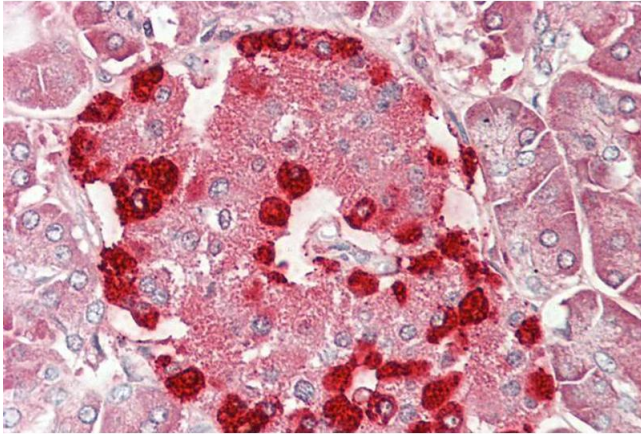
| | |
|-------------------|---|
| Target: | TSPY-Like 2 (TSPYL2) |
| Alternative Name: | TSPYL2 (TSPYL2 Products) |
| Background: | TSPYL2, TSPY-like 2, CDA1, CINAP, CTCL, DENTT, HRIHFB2216, NP79, SE204, TSPX, CASK-interacting nucleosome assembly protein, CTCL tumor antigen se20-4, CTCL-associated antigen se20-4, TSPY-like protein 2, cell division autoantigen 1, cutaneous T-cell lymph |
| Gene ID: | 64061 |
| NCBI Accession: | NP_071400 |
| Pathways: | ER-Nucleus Signaling |

Application Details

| | |
|--------------------|--|
| Application Notes: | Immunohistochemistry: Paraffin embedded Human Pancreas. Recommended concentration: 5 µg/mL. Western Blot: Approx 75 kDa band observed in lysates of cell lines Jurkat and MOLT4 (calculated MW of 79.4 kDa according to NP_071400.1). Recommended concentration: 0.3-1 µg/mL. Primary incubation was 1 hour. Peptide ELISA: antibody detection limit dilution 1:64000. |
| Restrictions: | For Research Use only |

Handling

| | |
|--------------------|--|
| Format: | Liquid |
| Concentration: | 0.5 mg/mL |
| Buffer: | Supplied at 0.5 mg/mL in Tris saline, 0.02 % sodium azide, pH 7.3 with 0.5 % bovine serum albumin. |
| Preservative: | Sodium azide |
| Precaution of Use: | This product contains Sodium azide: a POISONOUS AND HAZARDOUS SUBSTANCE which should be handled by trained staff only. |
| Handling Advice: | Minimize freezing and thawing. |
| Storage: | -20 °C |
| Storage Comment: | Aliquot and store at -20°C, with minimal freeze/thawing. A working aliquot may be refrigerated at 4°C for a few weeks and still remain viable. |



Immunohistochemistry

Image 1. ABIN940570 (5µg/ml) staining of paraffin embedded Human Pancreas. Steamed antigen retrieval with citrate buffer pH 6, AP-staining.



Western Blotting

Image 2. ABIN940570 (0.3µg/ml) staining of Jurkat lysate (35µg protein in RIPA buffer). Detected by chemiluminescence.