

Datasheet for ABIN940573
anti-VTCN1 antibody (AA 153-165)[Go to Product page](#)

1 Image

Overview

Quantity:	100 µg
Target:	VTCN1
Binding Specificity:	AA 153-165
Reactivity:	Human
Host:	Goat
Clonality:	Polyclonal
Conjugate:	This VTCN1 antibody is un-conjugated
Application:	Western Blotting (WB), ELISA

Product Details

Purpose:	VTCN1 (aa153-165)
Immunogen:	Peptide with sequence C-PEVNVDYNASSET, from the internal region of the protein sequence according to NP_078902.2.
Sequence:	PEVNVDYNAS SET
Isotype:	IgG
Cross-Reactivity:	Cow, Dog, Human, Mouse, Rat
Purification:	Purified from goat serum by ammonium sulphate precipitation followed by antigen affinity chromatography using the immunizing peptide.
Grade:	Verified

Target Details

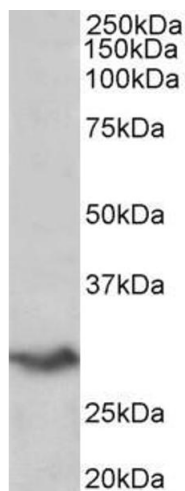
Target:	VTCN1
Alternative Name:	VTCN1 (VTCN1 Products)
Background:	VTCN1, V-set domain containing T cell activation inhibitor 1, B7-H4, B7H4, B7S1, B7X, B7h.5, FLJ22418, PRO1291, VCTN1, T cell costimulatory molecule B7x, T-cell costimulatory molecule B7x, V-set domain-containing T-cell activation inhibitor 1, immune cost
Gene ID:	79679, 242122, 295322
NCBI Accession:	NP_078902

Application Details

Application Notes:	Western Blot: Approx 28 kDa band observed in Human Spleen lysates (calculated MW of 30.9 kDa according to NP_078902.2). Recommended concentration: 0.1-0.3 µg/mL. Peptide ELISA: antibody detection limit dilution 1:16000.
Restrictions:	For Research Use only

Handling

Format:	Liquid
Concentration:	0.5 mg/mL
Buffer:	Supplied at 0.5 mg/mL in Tris saline, 0.02 % sodium azide, pH 7.3 with 0.5 % bovine serum albumin.
Preservative:	Sodium azide
Precaution of Use:	This product contains Sodium azide: a POISONOUS AND HAZARDOUS SUBSTANCE which should be handled by trained staff only.
Handling Advice:	Minimize freezing and thawing.
Storage:	-20 °C
Storage Comment:	Aliquot and store at -20°C, with minimal freeze/thawing. A working aliquot may be refrigerated at 4°C for a few weeks and still remain viable.



Western Blotting

Image 1. ABIN940573 (0.2µg/ml) staining of Human Spleen lysate (35µg protein in RIPA buffer). Primary incubation was 1 hour. Detected by chemiluminescence.