

Datasheet for ABIN94083

anti-CD38 antibody

3 Images

3 Publications

[Go to Product page](#)

Overview

Quantity:	0.1 mg
Target:	CD38
Reactivity:	Human
Host:	Mouse
Clonality:	Monoclonal
Conjugate:	This CD38 antibody is un-conjugated
Application:	Flow Cytometry (FACS), Western Blotting (WB), Immunohistochemistry (Frozen Sections) (IHC (fro)), Immunohistochemistry (Paraffin-embedded Sections) (IHC (p))

Product Details

Immunogen:	Human thymocytes in foetus
Clone:	HIT2
Isotype:	IgG1
Specificity:	The mouse monoclonal antibody HIT2 reacts with an extracellular epitope of CD38, a 45 kDa type II transmembrane glycoprotein strongly expressed mainly on plasma cells and activated T and B lymphocytes, it is an antigenic marker of lymphoid cells. Its binding is blocked by daratumumab.
Cross-Reactivity (Details):	Human
Purification:	Purified by protein-A affinity chromatography.
Purity:	> 95 % (by SDS-PAGE)

Target Details

Target:	CD38
Abstract:	CD38 Products
Background:	CD38 Molecule,CD38 (NAD ⁺ glycohydrolase) is a type II transmembrane glycoprotein able to induce activation, proliferation and differentiation of mature lymphocytes and mediate apoptosis of myeloid and lymphoid progenitor cells. Another role of CD38 is provided by enzymatic activity of its extracellular part. CD38 acts as NAD ⁺ glycohydrolase converting NAD ⁺ into ADP-ribose, as ADP-ribosyl cyclase producing cADPR and as cADPR hydrolase, thus affecting levels of calcium-mobilizing metabolites. ADPR produced by CD38 serves as an important second messenger of neutrophil and dendritic cell migration.,ADPRC1, cADPr hydrolase 1, T10, NAD(+) nucleosidase, ADP-ribosyl cyclase 1
Gene ID:	952
UniProt:	P28907

Application Details

Application Notes:	Immunohistochemistry (paraffin sections): Recommended dilution: 10 µg/mL. Western blotting: Recommended dilution: 2 µg/mL, positive control: RAJI human cell line, non-reducing conditions. Flow cytometry: Recommended dilution: 1-4 µg/mL
Restrictions:	For Research Use only

Handling

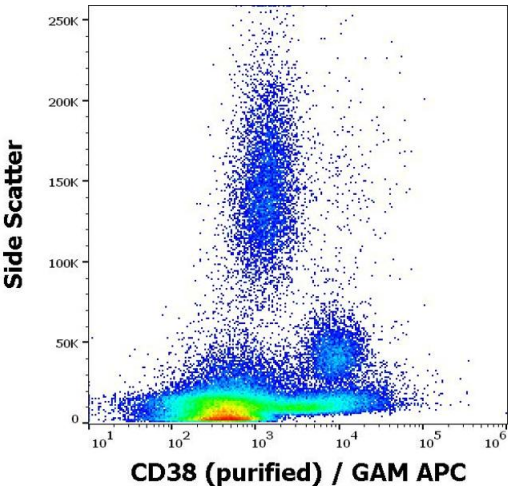
Concentration:	1 mg/mL
Buffer:	Phosphate buffered saline (PBS), pH 7.4, 15 mM sodium azide
Preservative:	Sodium azide
Precaution of Use:	This product contains Sodium azide: a POISONOUS AND HAZARDOUS SUBSTANCE which should be handled by trained staff only.
Handling Advice:	Do not freeze.
Storage:	4 °C
Storage Comment:	Store at 2-8°C. Do not freeze.

Product cited in: Všiánská, Říhová, Varmužová, Suská, Kryukov, Mikulášová, Kupská, Penka, Pour, Adam, Hájek: "Analysis of B-cell subpopulations in monoclonal gammopathies." in: **Clinical lymphoma, myeloma & leukemia**, Vol. 15, Issue 4, pp. e61-71, (2015) ([PubMed](#)).

Rozková, Novotná, Pytlík, Hochová, Kozák, Bartšnková, Spísek: "Toll-like receptors on B-CLL cells: expression and functional consequences of their stimulation." in: **International journal of cancer. Journal international du cancer**, Vol. 126, Issue 5, pp. 1132-43, (2010) ([PubMed](#)).

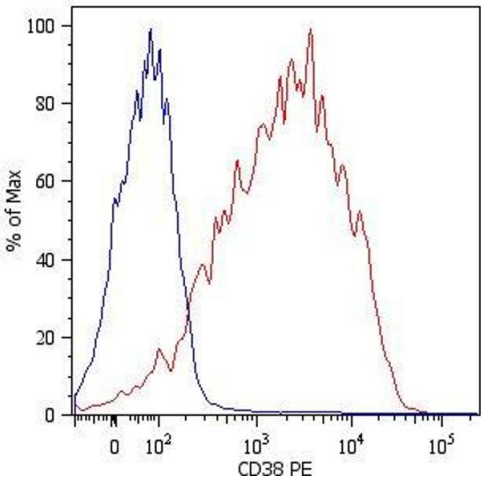
Kolar, Mehta, Pelayo, Capra: "A novel human B cell subpopulation representing the initial germinal center population to express AID." in: **Blood**, Vol. 109, Issue 6, pp. 2545-52, (2007) ([PubMed](#)).

Images



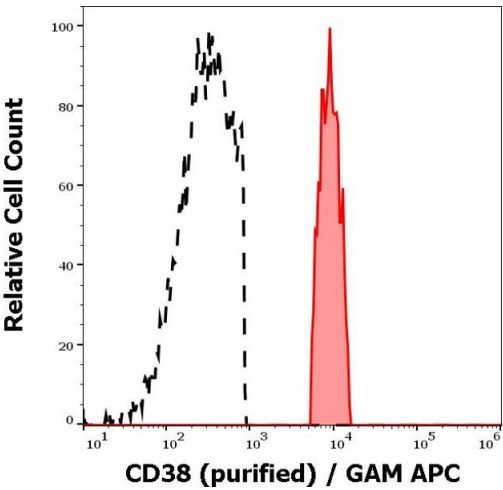
Flow Cytometry

Image 1. Flow cytometry surface staining pattern of human peripheral whole blood stained using anti-human CD38 (HIT2) purified antibody (concentration in sample 2 µg/mL, GAM APC).



Flow Cytometry

Image 2. Surface staining of PHA stimulated human peripheral blood lymphocytes with anti-human CD38 (HIT2) PE.



Flow Cytometry

Image 3. Separation of human monocytes (red-filled) from CD38 negative lymphocytes (black-dashed) in flow cytometry analysis (surface staining) of peripheral whole blood stained using anti-human CD38 (HIT2) purified antibody (concentration in sample 2 µg/mL, GAM APC).