

Datasheet for ABIN94104 **anti-CD40 antibody**

3 Images



[Go to Product page](#)

Overview

Quantity:	0.1 mg
Target:	CD40
Reactivity:	Human
Host:	Mouse
Clonality:	Monoclonal
Conjugate:	This CD40 antibody is un-conjugated
Application:	Flow Cytometry (FACS)

Product Details

Immunogen:	Human CD40a
Clone:	HI40a
Isotype:	IgG1
Specificity:	The antibody HI40a recognizes an extracellular epitope of CD40 (BP50), a 48 kDa type I single chain transmembrane glycoprotein expressed on normal and neoplastic B cells, but not on terminally differentiated plasma cells. CD40 antigen is also present on Hodgkin's and Reed-Sternberg cells, follicular dendritic cells, some macrophages, basal epithelial cells and endothelial cells.
Cross-Reactivity (Details):	Human
Purification:	Purified by protein-A affinity chromatography.
Purity:	> 95 % (by SDS-PAGE)

Target Details

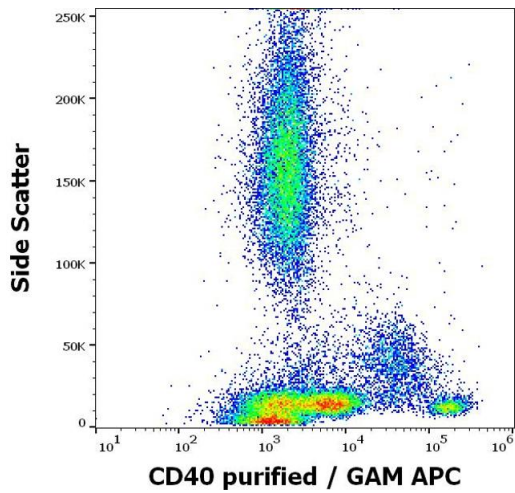
Target:	CD40
Alternative Name:	CD40 (CD40 Products)
Background:	<p>CD40 Molecule,CD40 is a costimulatory molecule of the TNF receptor superfamily and is expressed on many cell types, such as B cells, monocytes/macrophages, dendritic cells, endothelial cells, fibroblasts or vascular smooth muscle cells. Interaction of CD40 and its ligand CD154 (CD40L) is required for the generation of antibody responses to T-dependent antigens as well as for the development of germinal centers and memory B cells. In monocytes/macrophages CD40 engagement induces production of pro-inflammatory cytokines and chemokines. CD40-CD154 interactions are also critical for development of CD4 T cell-dependent effector functions. CD40 links innate and adaptive immune responses to bacterial stimuli and serves as an important regulator affecting functions of other costimulatory molecules.,TNFRSF5, Bp50</p>
Gene ID:	958
UniProt:	P05540
Pathways:	NF-kappaB Signaling , Cellular Response to Molecule of Bacterial Origin , M Phase , Regulation of Leukocyte Mediated Immunity , Positive Regulation of Immune Effector Process , Production of Molecular Mediator of Immune Response , Cancer Immune Checkpoints

Application Details

Application Notes:	Flow cytometry: The purified antibody is effective for indirect immunofluorescence staining of human cells by flow cytometry analysis using 1 µg/mL.
Restrictions:	For Research Use only

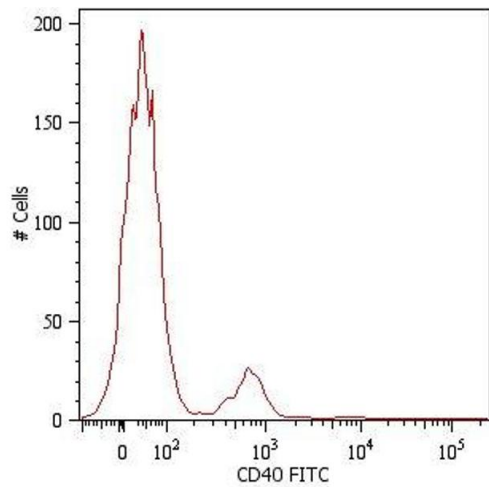
Handling

Concentration:	1 mg/mL
Buffer:	Phosphate buffered saline (PBS), pH 7.4
Preservative:	Azide free
Handling Advice:	Do not freeze.
Storage:	4 °C
Storage Comment:	Store at 2-8°C. Do not freeze.



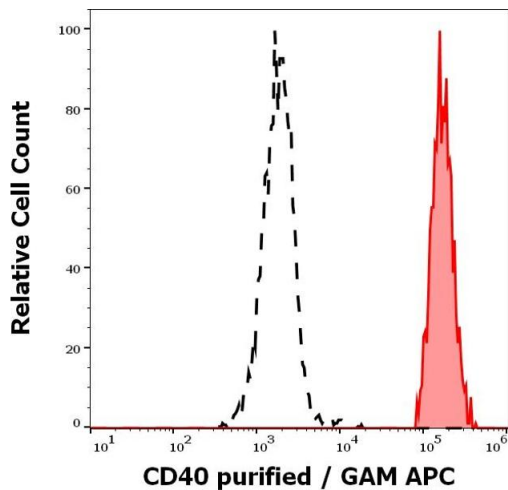
Flow Cytometry

Image 1. Flow cytometry surface staining pattern of human peripheral whole blood stained using anti-human CD40 (HI40a) purified antibody (concentration in sample 0.1 μ g/mL).



Flow Cytometry

Image 2. Surface staining of human peripheral blood cells with anti-human CD40 (HI40a) FITC. Cells in the lymphocyte gate were used for analysis.



Flow Cytometry

Image 3. Separation of human CD40 positive lymphocytes (red-filled) from neutrophil granulocytes (black-dashed) in flow cytometry analysis (surface staining) of human peripheral whole blood stained using anti-human CD40 (HI40a) purified antibody (concentration in sample 0.1 μ g/mL).