

Datasheet for ABIN94121

anti-CD44 antibody

5 Images

2 Publications

[Go to Product page](#)

Overview

Quantity:	0.1 mg
Target:	CD44
Reactivity:	Human, Dog, Pig
Host:	Mouse
Clonality:	Monoclonal
Conjugate:	This CD44 antibody is un-conjugated
Application:	Flow Cytometry (FACS), Western Blotting (WB), Immunohistochemistry (Paraffin-embedded Sections) (IHC (p)), Immunoprecipitation (IP)

Product Details

Immunogen:	COS-7 cells (African Green Monkey).
Clone:	MEM-263
Isotype:	IgG1
Specificity:	The antibody MEM-263 reacts with extracellular (N-terminal) domain of standard CD44 (Phagocyte glycoprotein 1), a 80-95 kDa transmembrane glycoprotein (hyaladherin family) present on the most of cells and tissues (leukocytes, endothelial cells, mesenchymal cells, etc.), it is negative on platelets and hepatocytes.
Cross-Reactivity (Details):	Human, Porcine, Canine (Dog)
Purification:	Purified by protein-A affinity chromatography.
Purity:	> 95 % (by SDS-PAGE)

Target Details

Target:	CD44
Alternative Name:	CD44 (CD44 Products)
Background:	CD44 Molecule,CD44 is a transmembrane glycoprotein expressed on the surface of most cells, which serves as a receptor for hyaluronan. CD44 mediates angiogenesis, cell adhesion, proliferation and migration, it is thus important for lymphocyte activation, recirculation and homing, it can thus serve e.g. as a modulator of macrophage recruitment in response to pathogen. Although CD44 functions are essential for physiological activities of normal cells, elevated CD44 expression correlates with poor prognosis in many carcinomas, facilitating tumour growth and metastasis, antiapoptosis and directional motility of cancer cells.,PGP-I, HUTCH-I, ECMR-III, Hermes antigen, Hyaluronate receptor, Heparan sulfate proteoglycan, Epican, MC56, MIC4, INLU, LHR
Gene ID:	960
UniProt:	P16070
Pathways:	Glycosaminoglycan Metabolic Process , Autophagy , Negative Regulation of intrinsic apoptotic Signaling

Application Details

Application Notes:	Flow cytometry: Recommended dilution: 4 µg/mL. Western blotting: Recommended dilution: 2 µg/mL, 60 min on vertical incubator, positive control: Kg-1a human acute leukemia cell lysate, JURKAT human leukemia T-cell lysate, non-reducing conditions, 6 % separating gel. Immunohistochemistry (paraffin sections): Recommended dilution: 10 µg/mL, positive tissue: uterus, myometrium.
Restrictions:	For Research Use only

Handling

Concentration:	1 mg/mL
Buffer:	Phosphate buffered saline (PBS), pH 7.4, 15 mM sodium azide
Preservative:	Sodium azide
Precaution of Use:	This product contains Sodium azide: a POISONOUS AND HAZARDOUS SUBSTANCE which should be handled by trained staff only.

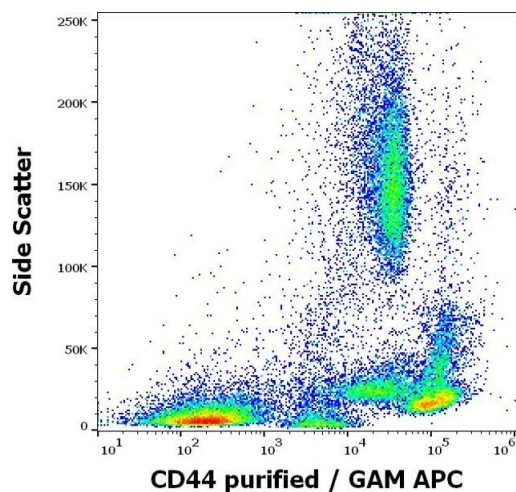
Handling

Handling Advice:	Do not freeze.
Storage:	4 °C
Storage Comment:	Store at 2-8°C. Do not freeze.

Publications

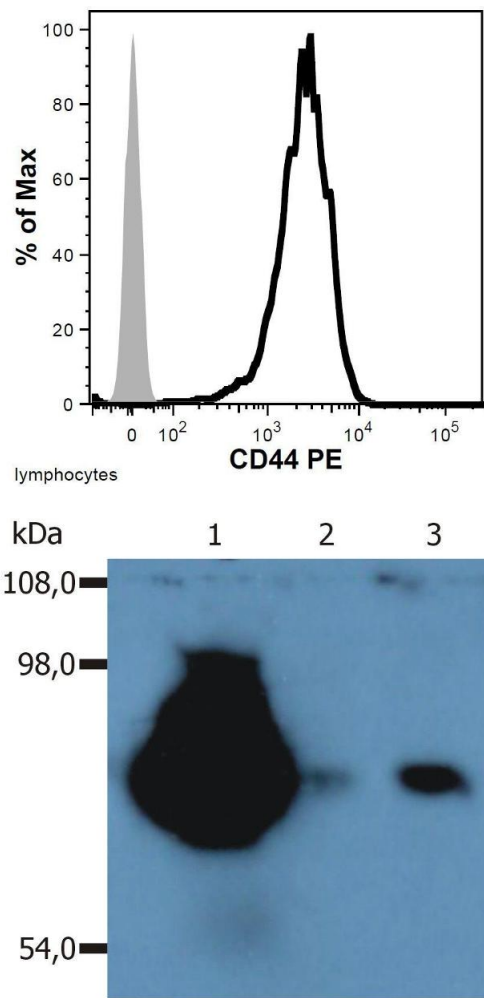
Product cited in:	Elashry, Gaertner, Klymiuk, Eldaey, Wenisch, Arnhold: "Characterisation of stemness and multipotency of ovine muscle-derived stem cells from various muscle sources." in: Journal of anatomy , Vol. 239, Issue 2, pp. 336-350, (2021) (PubMed).
	Klein, Weisshardt, Kleff, Jastrow, Jakob, Ergün: "Vascular wall-resident CD44+ multipotent stem cells give rise to pericytes and smooth muscle cells and contribute to new vessel maturation." in: PLoS ONE , Vol. 6, Issue 5, pp. e20540, (2011) (PubMed).

Images



Flow Cytometry

Image 1. Flow cytometry surface staining pattern of human peripheral whole blood stained using anti-human CD44 (MEM-263) purified antibody (concentration in sample 4 µg/mL) GAM APC.



Flow Cytometry

Image 2. Flow cytometry analysis of human peripheral blood (lymphocyte gate) using anti-CD44 () PE conjugate.

Western Blotting

Image 3. Western Blotting peripheral blood lymphocytes of various species using anti-CD44 (MEM-263). Lane 1: lysate of human PBL Lane 2: lysate of canine PBL Lane 3: lysate of porcine PBL

Please check the [product details page](#) for more images. Overall 5 images are available for ABIN94121.