



[Go to Product page](#)

Datasheet for ABIN94138
anti-CD45RA antibody (FITC)

2 Images

1 Publication

Overview

Quantity:	100 tests
Target:	CD45RA
Reactivity:	Human
Host:	Mouse
Clonality:	Monoclonal
Conjugate:	This CD45RA antibody is conjugated to FITC
Application:	Flow Cytometry (FACS)

Product Details

Immunogen:	Human thymocytes and T lymphocytes.
Clone:	MEM-56
Isotype:	IgG2b
Specificity:	The antibody MEM-56 reacts with an extracellular epitope of CD45RA, a 205-220 kDa single chain type I glycoprotein, variant of CD45 (CD45RA isoform). CD45RA is expressed on most of B lymphocytes, resting and native T lymphocytes, medullar thymocytes and monocytes.
Cross-Reactivity (Details):	Human
Purification:	Purified antibody is conjugated with fluorescein isothiocyanate (FITC) under optimum conditions and unconjugated antibody and free fluorochrome are removed by size-exclusion chromatography.

Target Details

Target:	CD45RA
Alternative Name:	CD45RA (CD45RA Products)
Background:	CD45RA is a high molecular weight isoform of a receptor-type protein tyrosine phosphatase, CD45 glycoprotein. CD45 is crucial in lymphocyte development and antigen signaling, serving as an important regulator of Src-family kinases, promotes cell survival by modulating integrin-mediated signal transduction pathway and is also involved in DNA fragmentation during apoptosis. CD45 isoforms differ in their extracellular domains, whereas they share identical transmembrane and cytoplasmic domains. These isoforms differ in their ability to translocate into the glycosphingolipid-enriched membrane domains and their expression depends on cell type and physiological state of the cell. CD45RA is expressed e.g. on naïve T cells and normal plasma cells.,PTPRCR, T200RA

Application Details

Application Notes:	Flow cytometry: The reagent is designed for analysis of human blood cells using 20 µL reagent / 100 µL of whole blood or 10 ⁶ cells in a suspension. The content of a vial (2 ml) is sufficient for 100 tests.
Comment:	The purified antibody is conjugated with Fluorescein isothiocyanate (FITC) under optimum conditions. The reagent is free of unconjugated FITC and adjusted for direct use. No reconstitution is necessary.
Restrictions:	For Research Use only

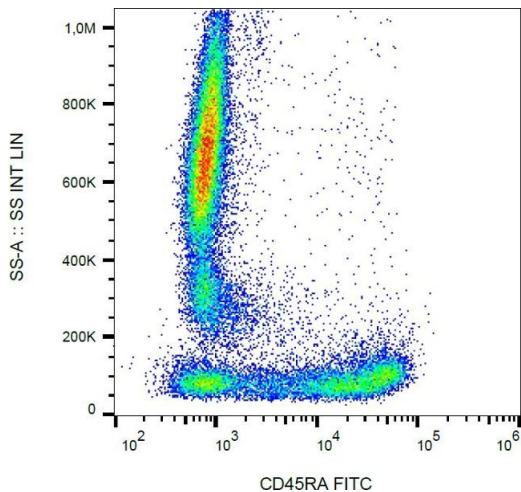
Handling

Reconstitution:	No reconstitution is necessary.
Buffer:	Stabilizing phosphate buffered saline (PBS), pH 7.4, 15 mM sodium azide
Preservative:	Sodium azide
Precaution of Use:	This product contains Sodium azide: a POISONOUS AND HAZARDOUS SUBSTANCE which should be handled by trained staff only.
Handling Advice:	Do not freeze. Avoid prolonged exposure to light.
Storage:	4 °C
Storage Comment:	Store at 2-8°C. Protect from prolonged exposure to light. Do not freeze.

Publications

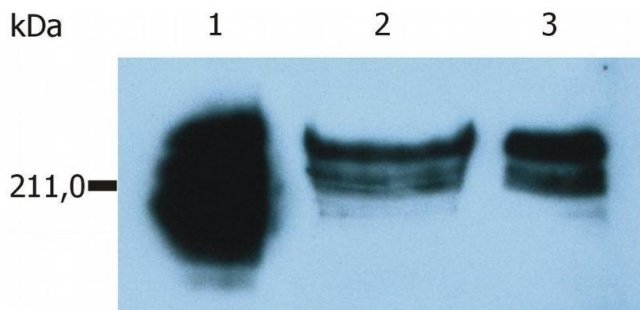
Product cited in: Bazil, Stefanová, Hilgert, Kristofová, Van?k, Bukovský, Horejsí: "Monoclonal antibodies against human leucocyte antigens. III. Antibodies against CD45R, CD6, CD44 and two newly described broadly expressed glycoproteins MEM-53 and MEM-102." in: **Folia biologica**, Vol. 35, Issue 5, pp. 289-97, (1990) ([PubMed](#)).

Images



Flow Cytometry

Image 1. Flow cytometry analysis (surface staining) of human peripheral blood with anti-CD45RA (MEM-56) FITC.



Western Blotting

Image 2. Western Blotting analysis of whole cell lysate of HUT-78 human cutaneous T cell lymphoma cell line. Lane 1: immunostaining with anti-human CD45 control antibody Lane 2: immunostaining with anti-human CD45RA (MEM-56); sample of cell lysate prepared under non-reducing conditions Lane 3: sample of cell lysate prepared under reducing conditions