

Datasheet for ABIN94159
anti-CD48 antibody (FITC)

3 Images

5 Publications

[Go to Product page](#)

Overview

Quantity:	100 tests
Target:	CD48
Reactivity:	Human, Non-Human Primate
Host:	Mouse
Clonality:	Monoclonal
Conjugate:	This CD48 antibody is conjugated to FITC
Application:	Flow Cytometry (FACS)

Product Details

Immunogen:	Raji human Burkitt's lymphoma cell line
Clone:	MEM-102
Isotype:	IgG1
Specificity:	The antibody MEM-102 reacts with CD48 (Blast-1), a 40-47 kDa GPI-anchored extracellular membrane protein (immunoglobulin supergene family) widely expressed on hematopoietic cells, it is negative on granulocytes, platelets and erythrocytes.
Cross-Reactivity (Details):	Human, Non-Human Primates
Purification:	Purified antibody is conjugated with fluorescein isothiocyanate (FITC) under optimum conditions and unconjugated antibody and free fluorochrome are removed by size-exclusion chromatography.

Target Details

Target:	CD48
Alternative Name:	CD48 (CD48 Products)
Background:	<p>CD48 Molecule,CD48 (Blast-1) belongs to the CD2 subset of the Ig superfamily, which includes CD2, CD2F-10, CD58, CD84, CD150, CD229, CD244 and others. These molecules bind to the same or another members of their family, thus mediate homotypic or heterotypic adhesion.</p> <p>CD48 is a GPI-anchored protein broadly expressed on hematopoietic cells and serves as a high affinity ligand for 2B4 and low affinity ligand for CD2. 2B4-CD48 interaction among NK cells and NK-T cells regulates cell proliferation. Signaling through CD48 results in eosinophil activation and CD48 expression is increased in several infectious diseases.,BCM1, BLAST, BLAST1, SLAMF2</p>
Gene ID:	962
UniProt:	P09326

Application Details

Application Notes:	Flow cytometry: The reagent is designed for analysis of human blood cells using 20 µL reagent / 100 µL of whole blood or 10 ⁶ cells in a suspension. The content of a vial (2 ml) is sufficient for 100 tests.
Comment:	The purified antibody is conjugated with Fluorescein isothiocyanate (FITC) under optimum conditions. The reagent is free of unconjugated FITC and adjusted for direct use. No reconstitution is necessary.
Restrictions:	For Research Use only

Handling

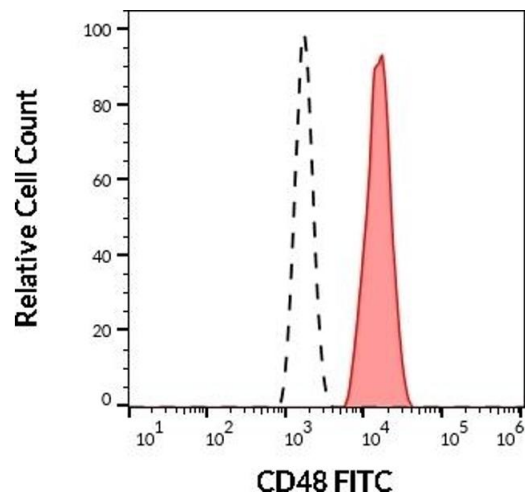
Reconstitution:	No reconstitution is necessary.
Buffer:	Stabilizing phosphate buffered saline (PBS), pH 7.4, 15 mM sodium azide
Preservative:	Sodium azide
Precaution of Use:	This product contains Sodium azide: a POISONOUS AND HAZARDOUS SUBSTANCE which should be handled by trained staff only.
Handling Advice:	Do not freeze. Avoid prolonged exposure to light.
Storage:	4 °C

Handling

Storage Comment: Store at 2-8°C. Protect from prolonged exposure to light. Do not freeze.

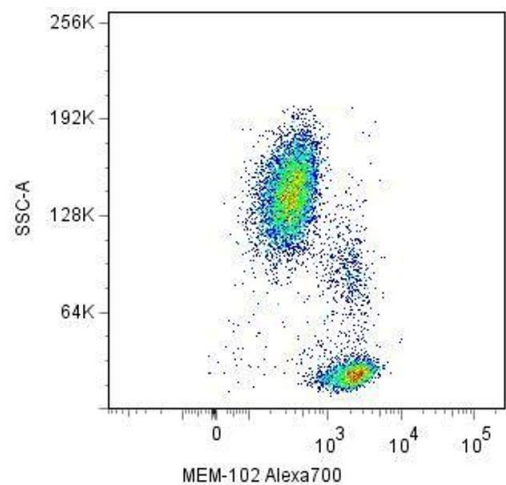
Publications

- Product cited in: Schatzlmaier, Supper, Göschl, Zwirzitz, Eckerstorfer, Ellmeier, Huppa, Stockinger: "Rapid multiplex analysis of lipid raft components with single-cell resolution." in: **Science signaling**, Vol. 8, Issue 395, pp. rs11, (2015) ([PubMed](#)).
- Drbal, Moertelmaier, Holzhauser, Muhammad, Fuertbauer, Howorka, Hinterberger, Stockinger, Schütz: "Single-molecule microscopy reveals heterogeneous dynamics of lipid raft components upon TCR engagement." in: **International immunology**, Vol. 19, Issue 5, pp. 675-84, (2007) ([PubMed](#)).
- Angelisová, Drbal, Horejsí, Cerný: "Association of CD10/neutral endopeptidase 24.11 with membrane microdomains rich in glycosylphosphatidylinositol-anchored proteins and Lyn kinase." in: **Blood**, Vol. 93, Issue 4, pp. 1437-9, (1999) ([PubMed](#)).
- Korínek, Stefanová, Angelisová, Hilgert, Horejsí: "The human leucocyte antigen CD48 (MEM-102) is closely related to the activation marker Blast-1." in: **Immunogenetics**, Vol. 33, Issue 2, pp. 108-12, (1991) ([PubMed](#)).
- Bazil, Stefanová, Hilgert, Kristofová, Van?k, Bukovský, Horejsí: "Monoclonal antibodies against human leucocyte antigens. III. Antibodies against CD45R, CD6, CD44 and two newly described broadly expressed glycoproteins MEM-53 and MEM-102." in: **Folia biologica**, Vol. 35, Issue 5, pp. 289-97, (1990) ([PubMed](#)).



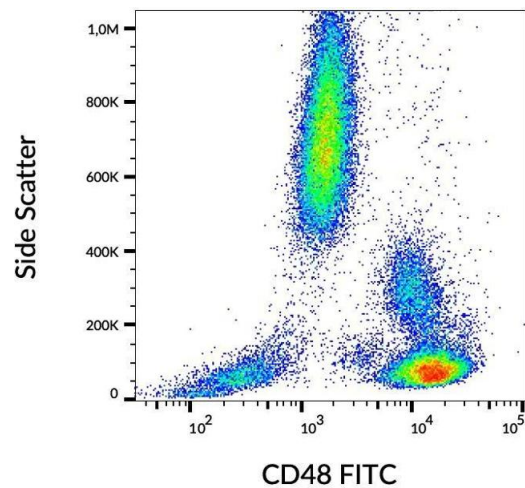
Flow Cytometry

Image 1. Separation of human CD48 positive lymphocytes (red-filled) from human CD48 negative neutrophil granulocytes (black-dashed) in flow cytometry analysis (surface staining) of human peripheral whole blood stained using anti-human CD48 (MEM-102) FITC (20 μ L reagent / 100 μ L of peripheral whole blood).



Flow Cytometry

Image 2. Surface staining of human peripheral blood cells with anti-CD48 (MEM-102) Alexa Fluor[®] 700.



Flow Cytometry

Image 3. Surface staining of human peripheral blood with anti-CD48 (MEM-102) FITC.