

Datasheet for ABIN94193

anti-CD58 antibody**2** Images[Go to Product page](#)

Overview

| | |
|--------------|-------------------------------------|
| Quantity: | 0.1 mg |
| Target: | CD58 |
| Reactivity: | Human, Pig |
| Host: | Mouse |
| Clonality: | Monoclonal |
| Conjugate: | This CD58 antibody is un-conjugated |
| Application: | Flow Cytometry (FACS) |

Product Details

| | |
|---------------|---|
| Immunogen: | NALM-6 human pre-B cell line |
| Clone: | MEM-63 |
| Isotype: | IgG1 |
| Specificity: | The antibody MEM-63 reacts with CD58 (LFA-3), a 40-70 kDa extracellular membrane glycoprotein distributed over many tissues, leukocytes, erythrocytes, endothelial cells, epithelial cells and fibroblasts. |
| Purification: | Purified by protein-A affinity chromatography. |
| Purity: | > 95 % (by SDS-PAGE) |

Target Details

| | |
|---------|------|
| Target: | CD58 |
|---------|------|

Target Details

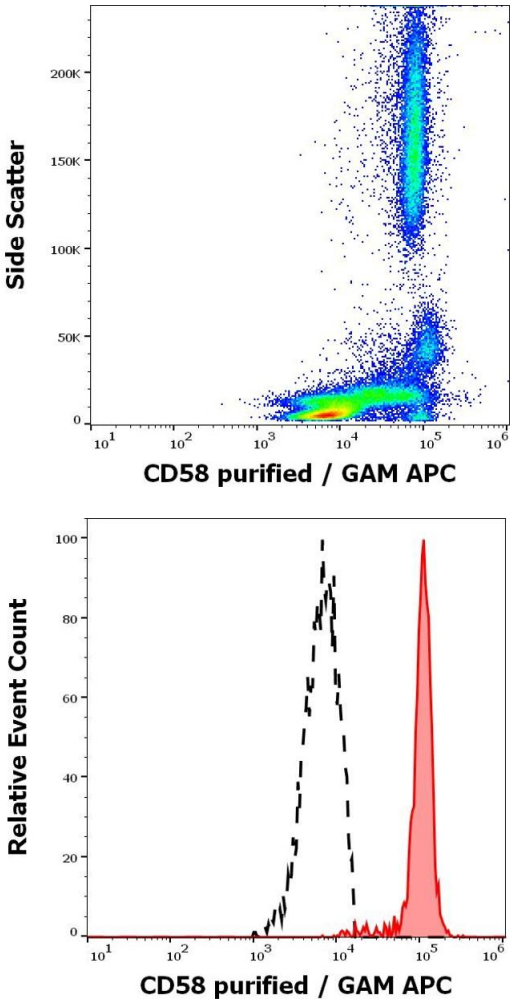
| | |
|-------------------|--|
| Alternative Name: | CD58 (CD58 Products) |
| Background: | CD58 Molecule,CD58 (LFA-3) is an immunoglobulin family adhesion molecule expressed by both hematopoietic and non-hematopoietic cells (often on antigen presenting cells) and serving as ligand of CD2. This interaction is important for T cell-mediated immunity. CD58 is expressed in transmembrane form and in GPI-anchored form, the later is constitutively associated with protein kinases whereas the transmembrane form activates kinase activity upon triggering. CD58 is a powerful tool for detection of minimal residual disease in acute lymphocytic leukemia, and for evaluation of liver damage related with hepatitis B.,LFA3, AG3 |
| Gene ID: | 965 |
| UniProt: | P19256 |

Application Details

| | |
|--------------------|---|
| Application Notes: | Flow cytometry: Recommended dilution: 1-4 µg/mL. Cold-induced transient opalescent turbidity may appear during the storage at 2 - 8 °C. Bring the antibody to room temperature until the turbidity disappears, and mix well before the use. |
| Restrictions: | For Research Use only |

Handling

| | |
|--------------------|--|
| Concentration: | 1 mg/mL |
| Buffer: | Phosphate buffered saline (PBS), pH 8.8, 15 mM sodium azide |
| Preservative: | Sodium azide |
| Precaution of Use: | This product contains Sodium azide: a POISONOUS AND HAZARDOUS SUBSTANCE which should be handled by trained staff only. |
| Storage: | 4 °C |
| Storage Comment: | Store at 2-8°C. Do not freeze. |



Flow Cytometry

Image 1. Flow cytometry surface staining pattern of human peripheral whole blood stained using anti-human CD58 (MEM-63) purified antibody (concentration in sample 1,67 µg/mL, GAM APC).

Flow Cytometry

Image 2. Separation of human monocytes (red-filled) from human CD58 negative lymphocytes (black-dashed) in flow cytometry analysis (surface staining) of human peripheral whole blood stained using anti-human CD58 (MEM-63) purified antibody (concentration in sample 1,67 µg/mL, GAM APC).