

Datasheet for ABIN94206

anti-CD6 antibody**2** Images**3** Publications[Go to Product page](#)

Overview

Quantity:	0.1 mg
Target:	CD6
Reactivity:	Human
Host:	Mouse
Clonality:	Monoclonal
Conjugate:	This CD6 antibody is un-conjugated
Application:	Flow Cytometry (FACS), Western Blotting (WB), Immunoprecipitation (IP), Immunohistochemistry (Paraffin-embedded Sections) (IHC (p))

Product Details

Immunogen:	Human CD6 antigen purified by immunoaffinity chromatography from HBP-ALL cells followed by preparative SDS-PAGE of non-boiled non-reduced sample (excised piece of gel corresponding to the 100 kDa zone).
Clone:	MEM-98
Isotype:	IgG1
Specificity:	The antibody MEM-98 reacts with an extracellular epitope of CD6, a 100-130 kDa single chain transmembrane glycoprotein expressed on T and B lymphocytes subsets, thymocytes, and acute lymphocytic leukemia cells.
Cross-Reactivity (Details):	Human
Purification:	Purified by protein-A affinity chromatography.
Purity:	> 95 % (by SDS-PAGE)

Target Details

Target:	CD6
Alternative Name:	CD6 (CD6 Products)
Background:	CD6 Molecule,CD6, also known as T12, is a member of the scavenger receptor superfamily found on T and B cell subsets, thymocytes, and acute lymphocytic leukemia cells (ALL). CD6 interacts with its ligand CD166/ALCAM (activated leukocyte cell adhesion molecule) and serves as a coreceptor for T cell activation and stabilizer of the immunological synapse. CD6-ALCAM mediated cell adhesion is also important for T cell proliferation. CD6 may exert some its functions via association with CD5, probably by fine-tuning CD5 signaling. Ligation of CD6 has antiapoptotic role in chronic lymphocytic leukemia B cells.,T12, TP120
Gene ID:	923
UniProt:	P30203

Application Details

Application Notes:	Flow cytometry: Recommended dilution: 2 µg/mL. Immunohistochemistry (paraffin sections): Recommended dilution: 10 µg/mL, positive tissue: spleen. Western blotting: Non-reducing conditions.
Restrictions:	For Research Use only

Handling

Concentration:	1 mg/mL
Buffer:	Phosphate buffered saline (PBS), pH 7.4, 15 mM sodium azide
Preservative:	Sodium azide
Precaution of Use:	This product contains Sodium azide: a POISONOUS AND HAZARDOUS SUBSTANCE which should be handled by trained staff only.
Handling Advice:	Do not freeze.
Storage:	4 °C
Storage Comment:	Store at 2-8°C. Do not freeze.

Publications

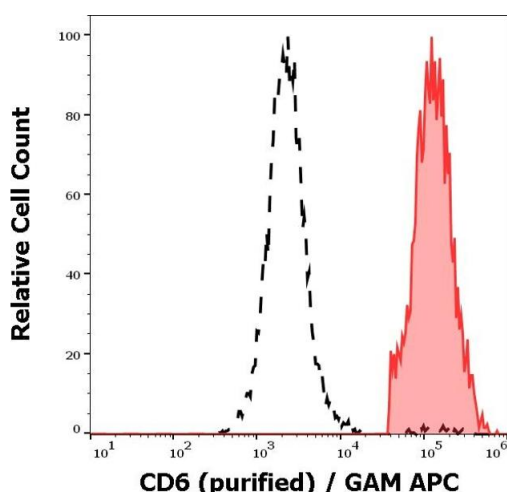
Product cited in:	Castro, Oliveira, Nunes, Fabre, Barbosa, Peixoto, Brown, Parnes, Bismuth, Moreira, Rocha,
-------------------	---

Carmo: "Extracellular isoforms of CD6 generated by alternative splicing regulate targeting of CD6 to the immunological synapse." in: **Journal of immunology (Baltimore, Md. : 1950)**, Vol. 178, Issue 7, pp. 4351-61, (2007) ([PubMed](#)).

Hassan, Simmonds, Clarkson, Hanrahan, Puklavec, Bomb, Barclay, Brown: "CD6 regulates T-cell responses through activation-dependent recruitment of the positive regulator SLP-76." in: **Molecular and cellular biology**, Vol. 26, Issue 17, pp. 6727-38, (2006) ([PubMed](#)).

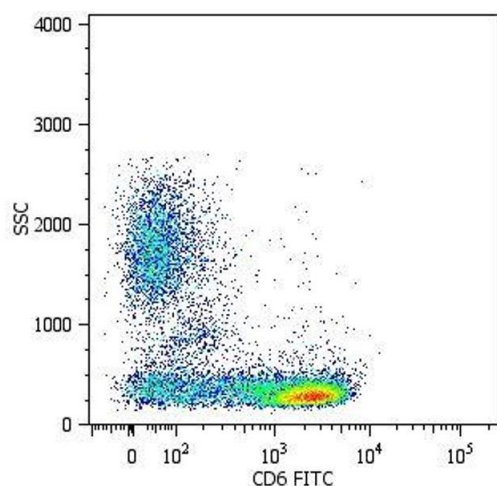
Bazil, Stefanová, Hilgert, Kristofová, Van?k, Bukovský, Horejsí: "Monoclonal antibodies against human leucocyte antigens. III. Antibodies against CD45R, CD6, CD44 and two newly described broadly expressed glycoproteins MEM-53 and MEM-102." in: **Folia biologica**, Vol. 35, Issue 5, pp. 289-97, (1990) ([PubMed](#)).

Images



Flow Cytometry

Image 1. Separation of human CD6 positive lymphocytes (red-filled) from neutrophil granulocytes (black-dashed) in flow cytometry analysis (surface staining) of peripheral whole blood stained using anti-human CD6 (MEM-98) purified antibody (concentration in sample 2 µg/mL, GAM APC).



Flow Cytometry

Image 2. Surface staining of human peripheral blood cells with anti-human CD6 (MEM-98) FITC.