

Datasheet for ABIN94283

## anti-Cytokeratin 18 antibody (Biotin)



[Go to Product page](#)

4 Images

3 Publications

### Overview

Quantity:	100 µg
Target:	Cytokeratin 18 (KRT18)
Reactivity:	Human
Host:	Mouse
Clonality:	Monoclonal
Conjugate:	This Cytokeratin 18 antibody is conjugated to Biotin
Application:	Western Blotting (WB), Flow Cytometry (FACS), ELISA, Immunohistochemistry (Paraffin-embedded Sections) (IHC (p)), Immunoprecipitation (IP), Immunocytochemistry (ICC)

### Product Details

Purpose:	Anti-Cytokeratin 18 Biotin
Immunogen:	Human breast carcinoma cell line PMC-42.
Clone:	DC-10
Isotype:	IgG1
Specificity:	The mouse monoclonal antibody DC-10 reacts with cytokeratin 18 (45 kDa). Cytokeratins are members of intermediate filaments subfamily of intracellular proteins, represented in epithelial tissues.
No Cross-Reactivity:	Cow, Dog, Hamster, Mouse, Pig, Rat, Sheep
Cross-Reactivity (Details):	Human
Purification:	Purified antibody is conjugated with biotin LC-NHS ester under optimum conditions and

## Product Details

unconjugated antibody and free biotin are removed by size-exclusion chromatography.

## Target Details

Target:	Cytokeratin 18 (KRT18)
Alternative Name:	Cytokeratin 18 ( <a href="#">KRT18 Products</a> )
Background:	Keratin 18,Cytokeratins are a subfamily of intermediate filaments and are characterized by remarkable biochemical diversity. They are represented in epithelial tissues by at least 20 different polypeptides, molecular weight between 40 kDa and 68 kDa. The individual cytokeratin polypeptides are designated 1 to 20 and divided into the type I (acidic cytokeratins 9-20) and type II (basic to neutral cytokeratins 1-8) families. Cytokeratin 18 belongs to type I family (acidic cytokeratins),K18, CK18, CYK18, KRT18
Gene ID:	3875
UniProt:	<a href="#">P05783</a>
Pathways:	<a href="#">Apoptosis</a> , <a href="#">Caspase Cascade in Apoptosis</a>

## Application Details

Application Notes:	Flow cytometry: Recommended dilution: 2-6 µg/mL. Intracellular staining. Western blotting: Recommended dilution: 1-2 µg/mL.
Restrictions:	For Research Use only

## Handling

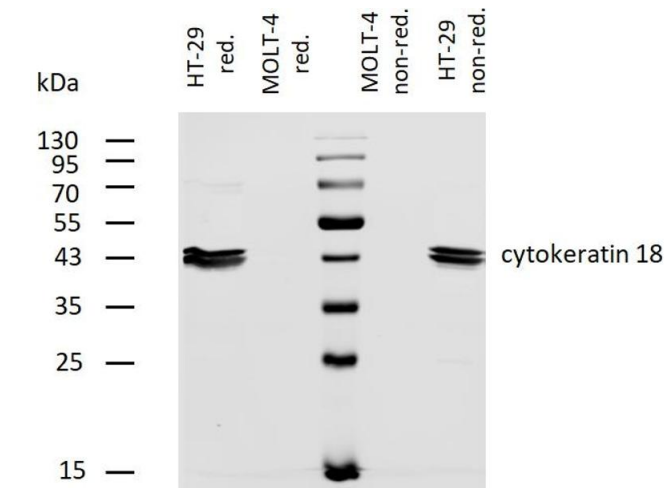
Concentration:	1 mg/mL
Buffer:	Phosphate buffered saline (PBS), pH 7.4, 15 mM sodium azide
Preservative:	Sodium azide
Precaution of Use:	This product contains Sodium azide: a POISONOUS AND HAZARDOUS SUBSTANCE which should be handled by trained staff only.
Handling Advice:	<b>Do not freeze.</b> Avoid prolonged exposure to light.
Storage:	4 °C
Storage Comment:	Store at 2-8°C. Do not freeze.

Product cited in: Vojtšek, Stasková, Nenutil, Lauerová, Kovarik, Rejthar, Bárteková, Bártek: "Monoclonal antibodies recognizing different epitopes of cytokeratin No.18." in: **Folia biologica**, Vol. 35, Issue 6, pp. 373-82, (1990) ([PubMed](#)).

Kovarik, Rejthar, Lauerová, Vojtšek, Bárteková: "Monoclonal antibodies against individual cytokeratins in the detection of metastatic spread." in: **International journal of cancer**. **Supplement = Journal international du cancer. Supplement**, Vol. 3, pp. 50-5, (1989) ([PubMed](#)).

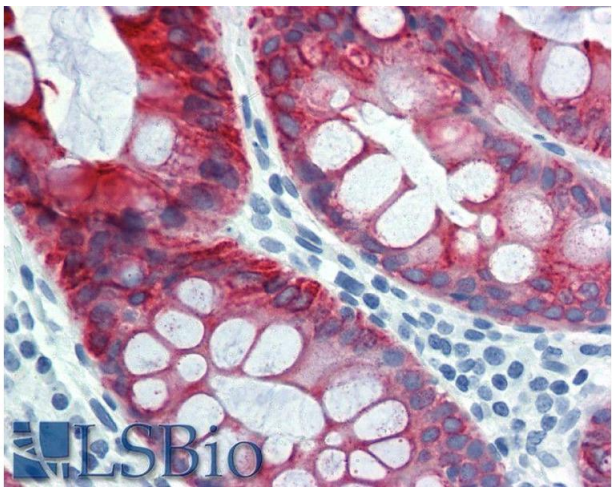
Lauerová, Kovarik, Bártek, Rejthar, Vojtšek: "Novel monoclonal antibodies defining epitope of human cytokeratin 18 molecule." in: **Hybridoma**, Vol. 7, Issue 5, pp. 495-504, (1989) ([PubMed](#)).

Images



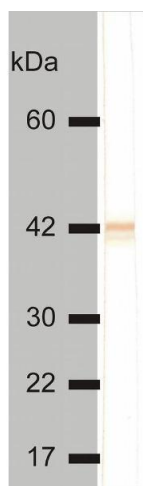
Western Blotting

**Image 1.** Western blotting analysis of human cytokeratin 18 using mouse monoclonal antibody DC-10 on lysates of HT-29 cell line and MOLT-4 cell line (cytokeratin non-expressing cell line, negative control) under non-reducing and reducing conditions. Nitrocellulose membrane was probed with 2 µg/mL of biotinylated mouse anti-cytokeratin 18 monoclonal antibody followed by IRDye800-conjugated streptavidin. Cytokeratin 18 was detected at approximately 46 kDa.



Immunohistochemistry

**Image 2.** Immunohistochemistry staining of human colon (paraffin sections) using anti-cytokeratin 18 (clone).



#### Western Blotting

**Image 3.** Detection of cytokeratin 18 in HeLa cell lysate by mouse monoclonal antibody DC-10 .

Please check the [product details page](#) for more images. Overall 4 images are available for ABIN94283.