



[Go to Product page](#)

Datasheet for ABIN94335

## anti-MICA antibody

### 1 Image

#### Overview

Quantity:	0.1 mg
Target:	MICA
Reactivity:	Human, Cow, Non-Human Primate
Host:	Mouse
Clonality:	Monoclonal
Conjugate:	This MICA antibody is un-conjugated
Application:	ELISA, Flow Cytometry (FACS), Immunoprecipitation (IP)

#### Product Details

Immunogen:	COS-7 African green monkey kidney cells
Clone:	MEM-123
Isotype:	IgG3
Specificity:	The antibody MEM-123 reacts with an extracellular epitope of all human classical MHC Class I molecules (major histocompatibility complex) in native cell-surface forms as well as with human HLA-G cDNA transfected cells. MHC Class I molecules (MHC Class Ia) are expressed on the surface of all human cell types. The antibody MEM-123 completely blocks binding of classical W6/32 to surface-expressed HLA-G, but does not cross-blocks the antibody MEM-G/9.
Cross-Reactivity (Details):	Human, Non-Human Primates, Bovine
Purification:	Purified by protein-A affinity chromatography.
Purity:	> 95 % (by SDS-PAGE)

## Target Details

---

Target:	MICA
Alternative Name:	HLA-Class I ( <a href="#">MICA Products</a> )
Background:	HLA-class I major histocompatibility (MHC) antigens are intrinsic membrane glycoproteins expressed on nucleated cells and noncovalently associated with an invariant beta2 microglobulin. They carry foreign determinants important for immune recognition by cytotoxic T cells, thus important for anti-viral and anti-tumour defence. Human HLA-class I antigens are represented by HLA-A, HLA-B and HLA-C molecules.
Pathways:	<a href="#">Activation of Innate immune Response</a> , <a href="#">Transition Metal Ion Homeostasis</a>

## Application Details

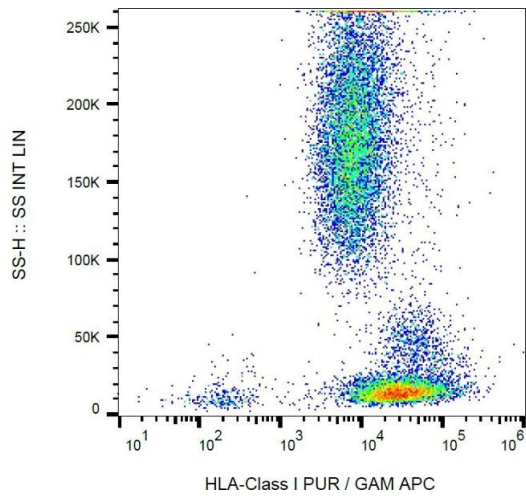
---

Application Notes:	Flow cytometry: Recommended dilution: 4 µg/mL.
Restrictions:	For Research Use only

## Handling

---

Concentration:	1 mg/mL
Buffer:	Phosphate buffered saline (PBS), pH 7.4, 15 mM sodium azide
Preservative:	Sodium azide
Precaution of Use:	This product contains Sodium azide: a POISONOUS AND HAZARDOUS SUBSTANCE which should be handled by trained staff only.
Handling Advice:	<b>Do not freeze.</b>
Storage:	4 °C
Storage Comment:	Store at 2-8°C. Do not freeze.



### Flow Cytometry

**Image 1.** Flow cytometry analysis (surface staining) of human peripheral blood with anti-HLA-class I (MEM-123) purified, GAM-APC.