



[Go to Product page](#)

Datasheet for ABIN94344  
**anti-HLA-DP/DR antibody**

5 Images

1 Publication

### Overview

Quantity:	0.1 mg
Target:	HLA-DP/DR
Reactivity:	Human
Host:	Mouse
Clonality:	Monoclonal
Conjugate:	This HLA-DP/DR antibody is un-conjugated
Application:	Flow Cytometry (FACS), Immunoprecipitation (IP), Western Blotting (WB), Immunohistochemistry (Paraffin-embedded Sections) (IHC (p))

### Product Details

Immunogen:	PHA-activated peripheral blood lymphocytes.
Clone:	MEM-136
Isotype:	IgG1
Specificity:	The antibody MEM-136 recognizes a common extracellular epitope on beta-chain of human HLA-DR and HLA-DP. It reacts with alpha/beta dimer as well as with dissociated beta-subunit. DR and DP are the isotypes of human MHC Class II molecules expressed on antigen-presenting cells (APC, dendritic cells, B lymphocytes, monocytes, macrophages).
Cross-Reactivity (Details):	Human
Purification:	Purified by protein-A affinity chromatography.
Purity:	> 95 % (by SDS-PAGE)

## Target Details

---

Target:	HLA-DP/DR
Alternative Name:	HLA-DR+DP ( <a href="#">HLA-DP/DR Products</a> )

## Application Details

---

Application Notes:	Flow cytometry: Recommended dilution: 1-4 µg/mL. Western blotting: Non-reducing conditions.
--------------------	--

Restrictions:	For Research Use only
---------------	-----------------------

## Handling

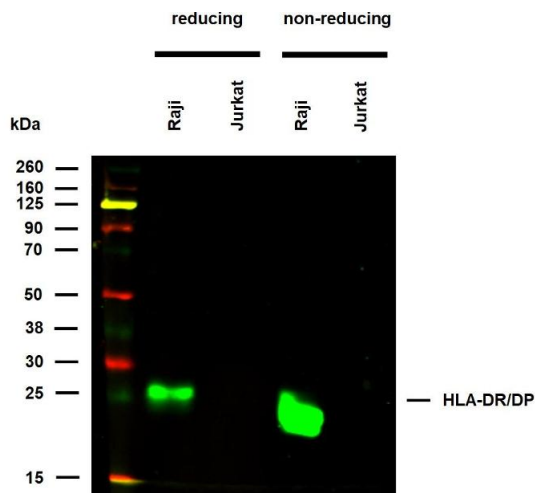
---

Concentration:	1 mg/mL
Buffer:	Phosphate buffered saline (PBS), pH 7.4, 15 mM sodium azide
Preservative:	Sodium azide
Precaution of Use:	This product contains Sodium azide: a POISONOUS AND HAZARDOUS SUBSTANCE which should be handled by trained staff only.
Handling Advice:	<b>Do not freeze.</b>
Storage:	4 °C
Storage Comment:	Store at 2-8°C. Do not freeze.

## Publications

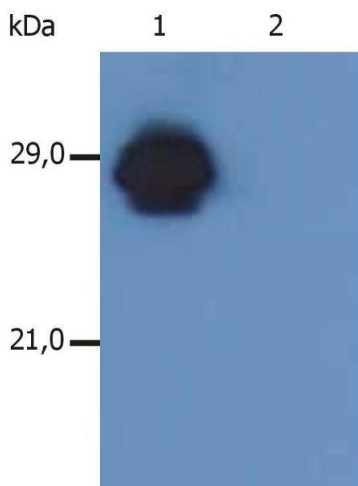
---

Product cited in:	Koch, Staffler, Hüttinger, Hilgert, Prager, Cerný, Steinlein, Majdic, Horejsí, Stockinger: "T cell activation-associated epitopes of CD147 in regulation of the T cell response, and their definition by antibody affinity and antigen density." in: <b>International immunology</b> , Vol. 11, Issue 5, pp. 777-86, (1999) ( <a href="#">PubMed</a> ).
-------------------	---



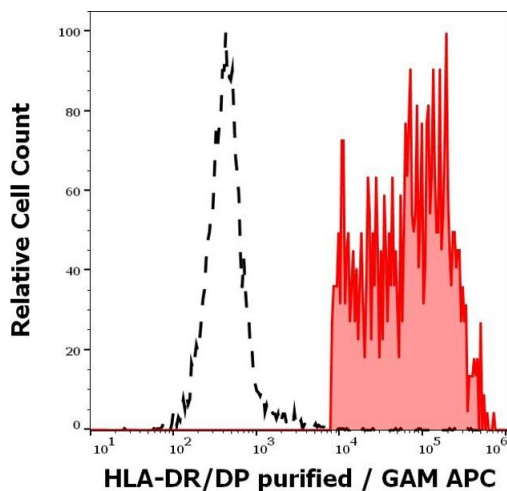
### Western Blotting

**Image 1.** Anti-HLA-DR/DP (clone MEM-136) works in WB application under reducing and non-reducing conditions. Western blotting analysis was performed on whole cell extracts (RIPA lysis buffer) of Raji and Jurkat cell lines, mixed and heated (100 °C, 5 min) with reducing and non-reducing SDS-loading buffer. Samples were resolved using 10 % Tris-glycine SDS gel electrophoresis. Nitrocellulose membrane blot was probed with mouse IgG1 monoclonal antibody MEM-136 (1 µg/mL), followed by IRDye 800CW Goat-anti-Mouse IgG (green). Multiplex fluorescent Western blot detection was performed. HLA-DR/DP molecules were detected at ~25 kDa in Raji cell line.



### Western Blotting

**Image 2.** Western Blotting analysis of MHC Class II in whole cell lysate of RAJI human Burkitt lymphoma cell line using anti-human HLA-DR+DP (MEM-136). The antibody recognizes β-chain of HLA-DR antigen under non-reducing conditions. Lane 1: immunostaining with anti-human HLA-DR+DP ( ) Lane 2: immunostaining with Isotype mouse IgG1 control (PPV-06; 11-457-C100)



### Flow Cytometry

**Image 3.** Separation of human HLA-DR/DP positive lymphocytes (red-filled) from neutrophil granulocytes (black-dashed) in flow cytometry analysis (surface staining) of human peripheral whole blood stained using anti-human HLA-DR/DP (MEM-136) purified antibody (concentration in sample 4 µg/mL) GAM APC.

Please check the [product details page](#) for more images. Overall 5 images are available for ABIN94344.