



[Go to Product page](#)

Datasheet for ABIN94346

## anti-HLA-DP/DR antibody

3 Images

1 Publication

### Overview

Quantity:	0.1 mg
Target:	HLA-DP/DR
Reactivity:	Human, Pig
Host:	Mouse
Clonality:	Monoclonal
Conjugate:	This HLA-DP/DR antibody is un-conjugated
Application:	Flow Cytometry (FACS), Immunoprecipitation (IP), Western Blotting (WB), Immunohistochemistry (Paraffin-embedded Sections) (IHC (p))

### Product Details

Immunogen:	Raji Burkitt's lymphoma cell line
Clone:	HL-38
Isotype:	IgG2a
Specificity:	The antibody HL-38 recognizes an extracellular common epitope on beta-chain of human HLA-DR and HLA-DP. DR and DP are the isotypes of human MHC Class II molecules expressed on antigen-presenting cells (APC, dendritic cells, B lymphocytes, monocytes, macrophages).
Cross-Reactivity (Details):	Human, Porcine
Purification:	Purified by protein-A affinity chromatography.
Purity:	> 95 % (by SDS-PAGE)

## Target Details

---

Target:	HLA-DP/DR
Alternative Name:	HLA-DR+DP ( <a href="#">HLA-DP/DR Products</a> )

## Application Details

---

Application Notes:	Western blotting: Non-reducing conditions. Flow cytometry: Recommended dilution: 1-4 µg/mL
Restrictions:	For Research Use only

## Handling

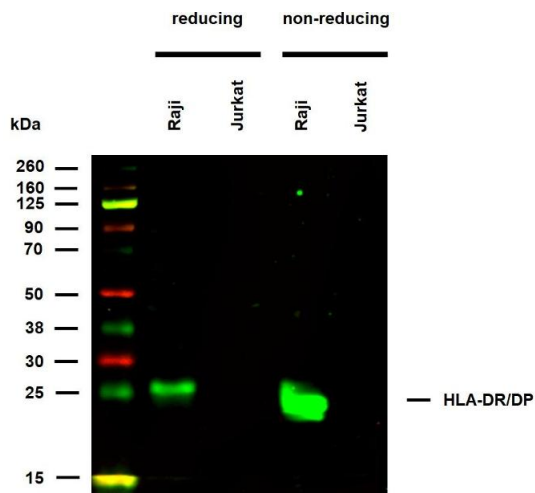
---

Concentration:	1 mg/mL
Buffer:	Phosphate buffered saline (PBS), pH 7.4, 15 mM sodium azide
Preservative:	Sodium azide
Precaution of Use:	This product contains Sodium azide: a POISONOUS AND HAZARDOUS SUBSTANCE which should be handled by trained staff only.
Handling Advice:	<b>Do not freeze.</b>
Storage:	4 °C
Storage Comment:	Store at 2-8°C. Do not freeze.

## Publications

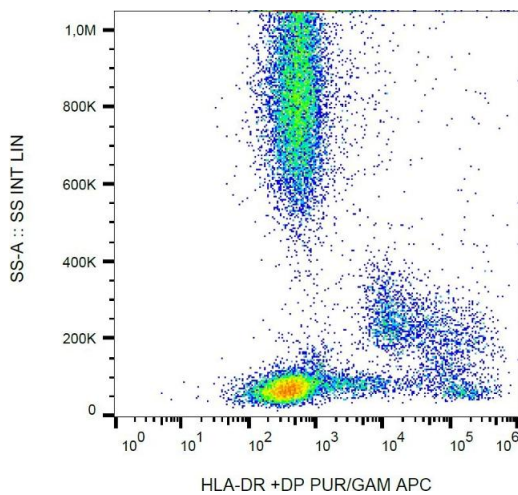
---

Product cited in:	Horejsí, N?mec, Angelisová, Kristofová, Gorga, Hilgert: "Characterization of seven new monoclonal antibodies against human DR, DR + DP and DQ1 + DQ3 antigens." in: <b>Tissue antigens</b> , Vol. 28, Issue 5, pp. 288-97, (1987) ( <a href="#">PubMed</a> ).
-------------------	---



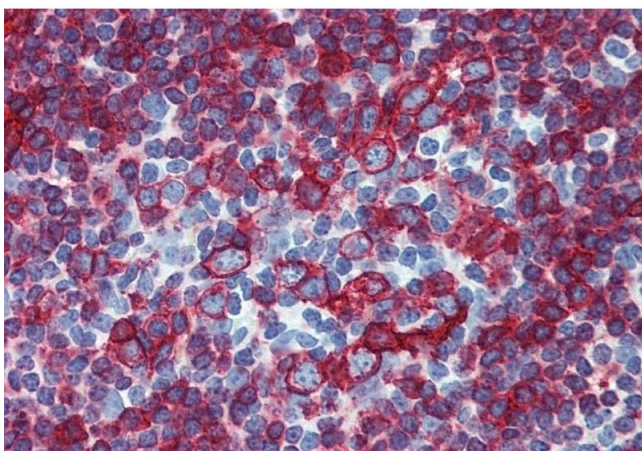
### Western Blotting

**Image 1.** Anti-HLA-DR/DP (clone HL-38) works in WB application under reducing and non-reducing conditions. Western blotting analysis was performed on whole cell extracts (RIPA lysis buffer) of Raji and Jurkat cell lines, mixed and heated (100 °C, 5 min) with reducing and non-reducing SDS-loading buffer. Samples were resolved using 10 % Tris-glycine SDS gel electrophoresis. Nitrocellulose membrane blot was probed with mouse IgG2a monoclonal antibody HL-38 (1 µg/mL), followed by IRDye 800CW Goat-anti-Mouse IgG (green). Multiplex fluorescent Western blot detection was performed. HLA-DR/DP molecules were detected at ~25 kDa in Raji cell line.



### Flow Cytometry

**Image 2.** Flow cytometry analysis (surface staining) of human peripheral blood with anti-HLA-DR+DP (HL-38) PE.



### Immunohistochemistry (Paraffin-embedded Sections)

**Image 3.** Immunohistochemistry staining of human small intestine (paraffin-embedded sections) with anti-HLA-DR+DP (HL-38).