



[Go to Product page](#)

Datasheet for ABIN94350
anti-HLA-DR1 antibody

4 Images

Overview

Quantity:	0.1 mg
Target:	HLA-DR1
Reactivity:	Human
Host:	Mouse
Clonality:	Monoclonal
Conjugate:	This HLA-DR1 antibody is un-conjugated
Application:	Flow Cytometry (FACS), ELISA, Western Blotting (WB)

Product Details

Immunogen:	Purified, insoluble DR1 beta chain (DRB1*0101) expressed in E. coli inclusion bodies.
Clone:	MEM-267
Isotype:	IgG2b
Specificity:	The antibody MEM-267 specifically binds extracellularly to the empty but not peptide-loaded form of HLA-DR1. DR is the isotypes of human MHC Class II molecules expressed on antigen-presenting cells (APC, dendritic cells, B lymphocytes, monocytes, macrophages).
Cross-Reactivity (Details):	Human
Purification:	Purified by protein-A affinity chromatography.
Purity:	> 95 % (by SDS-PAGE)

Target Details

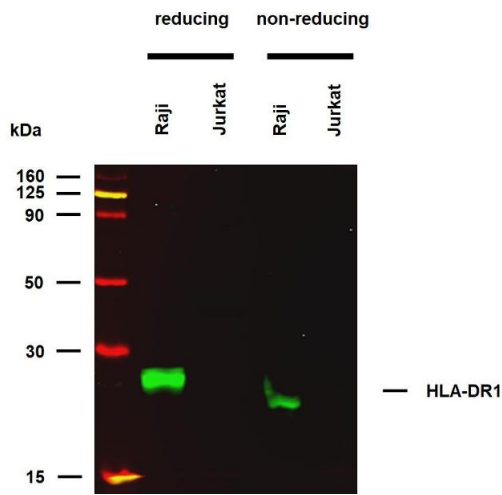
Target:	HLA-DR1
Alternative Name:	HLA-DR1 (HLA-DR1 Products)
Background:	<p>HLA-DR1 belongs to the HLA class II beta chain paralogues. The MHC Class II molecule is a heterodimer consisting of an alpha (DRA) and a beta chain (DRB), both anchored in the membrane. It plays a central role in the immune system by presenting peptides derived from extracellular proteins. MHC Class II molecules are expressed in antigen presenting cells (APC). The beta chain is approximately 26-28 kDa. Within the DR molecule the beta chain contains all the polymorphisms specifying the peptide binding specificities. Hundreds of DRB1 alleles have been described and typing for these polymorphisms is routinely done for bone marrow and kidney transplantation.</p>

Application Details

Application Notes:	Flow cytometry: The antibody MEM-267 stains immature dendritic cells that express empty cell surface MHC molecules, but not cells that express predominantly peptide loaded forms.
Restrictions:	For Research Use only

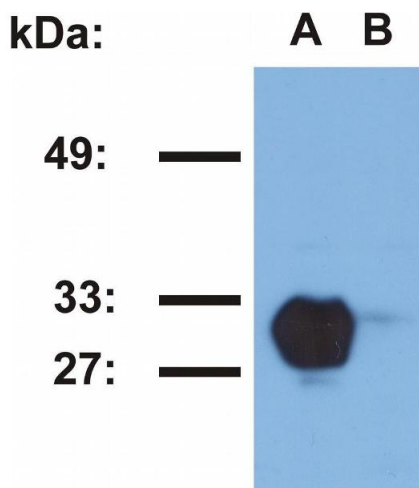
Handling

Concentration:	1 mg/mL
Buffer:	Phosphate buffered saline (PBS), pH 7.4, 15 mM sodium azide
Preservative:	Sodium azide
Precaution of Use:	This product contains Sodium azide: a POISONOUS AND HAZARDOUS SUBSTANCE which should be handled by trained staff only.
Handling Advice:	Do not freeze.
Storage:	4 °C
Storage Comment:	Store at 2-8°C. Do not freeze.



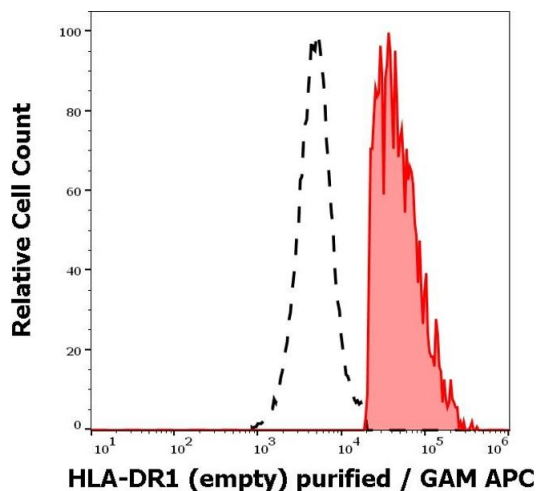
Western Blotting

Image 1. Anti-HLA-DR1 (empty) (clone MEM-267) works in WB application under reducing and non-reducing conditions. Western blotting analysis was performed on whole cell extracts (RIPA lysis buffer) of Raji and Jurkat cell lines, mixed and heated (100 °C, 5 min) with reducing and non-reducing SDS-loading buffer. Samples were resolved using 10 % Tris-glycine SDS gel electrophoresis. Nitrocellulose membrane blot was probed with mouse IgG2b monoclonal antibody MEM-267 (1 µg/mL), followed by IRDye 800CW Goat-anti-Mouse IgG (green). Multiplex fluorescent Western blot detection was performed. HLA-DR1 Molecules were detected at ~25 kDa in Raji cell line.



Western Blotting

Image 2. Western blotting analysis of HLA-DR1 in Raji (A) and Jurkat (B) cell lines using MEM-267 antibody.



Flow Cytometry

Image 3. Separation of human HLA-DR1 positive lymphocytes (red-filled) from HLA-DR1 negative lymphocytes (black-dashed) in flow cytometry analysis (surface staining) of peripheral whole blood stained using anti-human HLA-DR1 (empty) (MEM-267) purified antibody (concentration in sample 9 µg/mL, GAM APC).

Please check the [product details page](#) for more images. Overall 4 images are available for ABIN94350.