



[Go to Product page](#)

Datasheet for ABIN94400

Mouse anti-Human IgG (Fab Region) Antibody

2 Images

Overview

Quantity:	0.1 mg
Target:	IgG
Binding Specificity:	Fab Region
Reactivity:	Human
Host:	Mouse
Clonality:	Monoclonal
Application:	ELISA, Western Blotting (WB), Flow Cytometry (FACS)

Product Details

Immunogen:	Purified human IgG.
Clone:	4A11
Isotype:	IgG2b
Specificity:	The mouse monoclonal antibody 4A11 reacts with Fab fragment of human IgG. This antibody detects Fab fragments regardless light chain type.
Cross-Reactivity (Details):	Human
Purification:	Purified by protein-A affinity chromatography.
Purity:	> 95 % (by SDS-PAGE)

Target Details

Target:	IgG
---------	-----

Target Details

Abstract: [IgG Products](#)

Target Type: Antibody

Background: Immunoglobulin G (IgG) is a 150 kDa soluble protein that serves as a major effector molecule of the humoral immune response in man. Its concentration in blood plasma of healthy individuals is approximately 10 g/l, which accounts for about 75 % of the total plasma immunoglobulins. IgG has the highest stability of blood immunoglobulins (T1/2 = 21 days) and is able of placental transfer. IgG is secreted by plasma cells at a comparably high rate as other immunoglobulins.,Immunoglobulin G Fab fragment

Molecular Weight: 150 kDa

Application Details

Application Notes: Flow cytometry: Recommended dilution: 1-5 µg/mL.

Restrictions: For Research Use only

Handling

Format: Liquid

Concentration: 1 mg/mL

Buffer: Phosphate buffered saline (PBS), pH 7.4, 15 mM sodium azide

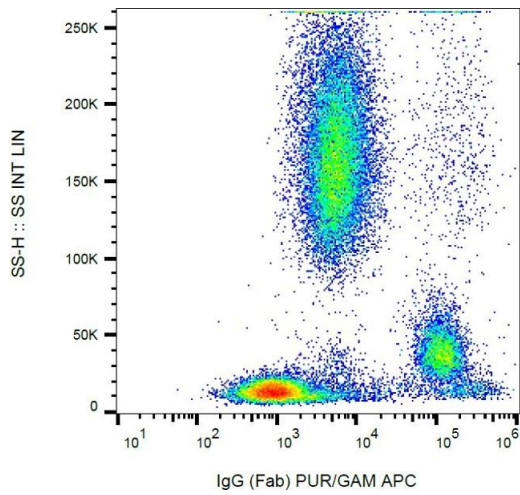
Preservative: Sodium azide

Precaution of Use: This product contains Sodium azide: a POISONOUS AND HAZARDOUS SUBSTANCE which should be handled by trained staff only.

Handling Advice: **Do not freeze.**

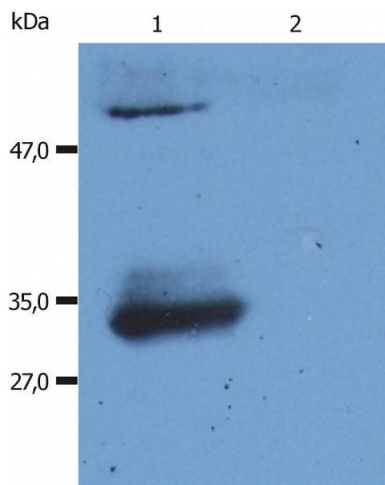
Storage: 4 °C

Storage Comment: Store at 2-8°C. Do not freeze.



Flow Cytometry

Image 1. Flow cytometry (surface staining) of human peripheral blood cells with anti-human IgG Fab fragment (4A11) purified / GAM-APC.



Western Blotting

Image 2. Western Blotting analysis (reducing conditions) of human IgG Fab fragment using anti-human IgG Fab fragment (4A11). Lane 1: Normal human immunoglobulins
Lane 2: Normal bovine immunoglobulins