

Datasheet for ABIN94403

Mouse anti-Human IgM Antibody (FITC)

5 Images

[Go to Product page](#)

Overview

Quantity:	0.1 mg
Target:	IgM
Reactivity:	Human
Host:	Mouse
Clonality:	Monoclonal
Conjugate:	FITC
Application:	Flow Cytometry (FACS)

Product Details

Immunogen:	Purified human IgM.
Clone:	CH2
Isotype:	IgG1
Specificity:	The antibody CH2 reacts with Fc fragment of human IgM.
Cross-Reactivity (Details):	Human
Purification:	Purified antibody is conjugated with fluorescein isothiocyanate (FITC) under optimum conditions and unconjugated antibody and free fluorochrome are removed by size-exclusion chromatography.

Target Details

Target:	IgM
---------	-----

Target Details

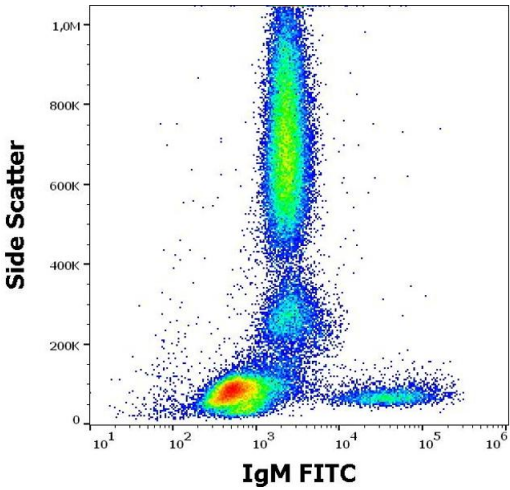
Abstract:	IgM Products
Target Type:	Antibody
Background:	Immunoglobulin M (IgM) is produced as a 900 kDa pentamer, which is an efficient complement binder. This antibody type is produced initially in the immune response and it is the first immunoglobulin class to be synthesized by a fetus or newborn. IgM antibodies do not cross the placenta. IgM concentration in blood is 0.12 g/l and its biological survival (plasma T1/2) is 5 days.,immunoglobulin M
Molecular Weight:	900 kDa

Application Details

Application Notes:	Flow cytometry: Recommended dilution: 1-5 µg/mL. Extracellular and intracellular staining.
Comment:	The purified antibody is conjugated with Fluorescein isothiocyanate (FITC) under optimum conditions. The reagent is free of unconjugated FITC.
Restrictions:	For Research Use only

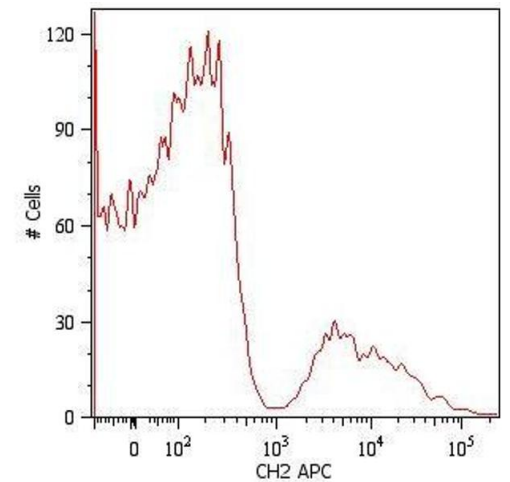
Handling

Format:	Liquid
Concentration:	1 mg/mL
Buffer:	Phosphate buffered saline (PBS), pH 7.4, 15 mM sodium azide
Preservative:	Sodium azide
Precaution of Use:	This product contains Sodium azide: a POISONOUS AND HAZARDOUS SUBSTANCE which should be handled by trained staff only.
Handling Advice:	Do not freeze. Avoid prolonged exposure to light.
Storage:	4 °C
Storage Comment:	Store at 2-8°C. Protect from prolonged exposure to light. Do not freeze.



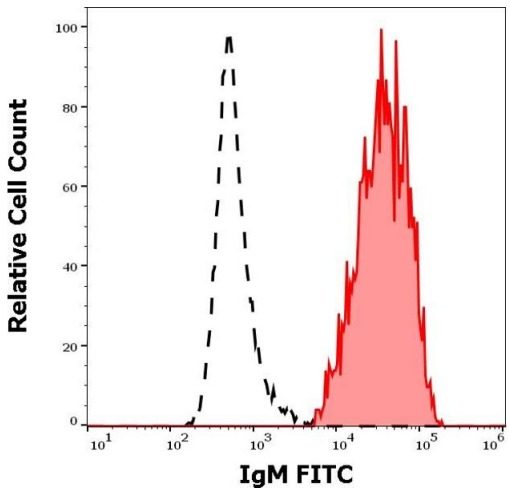
Flow Cytometry

Image 1. Flow cytometry surface staining pattern of human peripheral whole blood stained using anti-human IgM (CH2) FITC antibody (concentration in sample 1 µg/mL).



Flow Cytometry

Image 2. Surface staining of human peripheral blood cells with anti-human IgM (CH2) APC. Cells in the lymphocyte gate were used for analysis.



Flow Cytometry

Image 3. Separation of human IgM positive CD19 positive B-cells (red-filled) from IgM negative CD19 negative lymphocytes (black-dashed) in flow cytometry analysis (surface staining) of human peripheral whole blood stained using anti-human IgM (CH2) FITC antibody (concentration in sample 1 µg/mL).

Please check the [product details page](#) for more images. Overall 5 images are available for ABIN94403.