



[Go to Product page](#)

Datasheet for ABIN94437
anti-SLC9A3R1 antibody

1 Image

Overview

Quantity:	0.1 mg
Target:	SLC9A3R1
Reactivity:	Human
Host:	Mouse
Clonality:	Monoclonal
Conjugate:	This SLC9A3R1 antibody is un-conjugated
Application:	Western Blotting (WB), Immunoprecipitation (IP), Immunohistochemistry (Paraffin-embedded Sections) (IHC (p))

Product Details

Immunogen:	Bacterially produced recombinant full-length human NHERF1.
Clone:	EBP-10
Isotype:	IgG1 kappa
Specificity:	The mouse monoclonal antibody EBP-10 reacts with NHERF1/EBP50 phosphoprotein of 50 kDa, which serves as an adaptor and regulator protein.
Cross-Reactivity (Details):	Other not tested, Human
Purification:	Purified by protein-A affinity chromatography.
Purity:	> 95 % (by SDS-PAGE)

Target Details

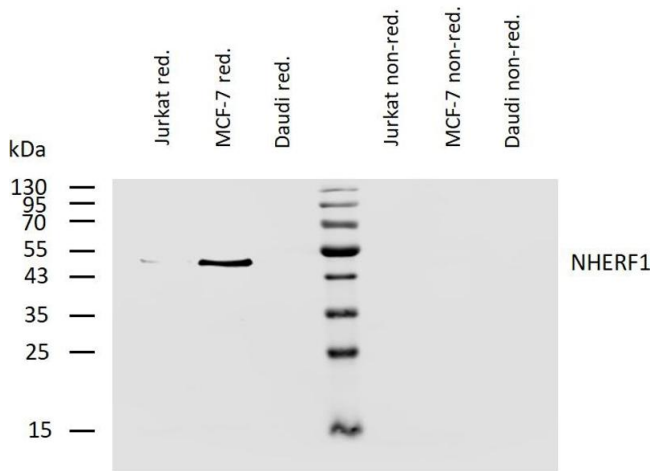
Target:	SLC9A3R1
Alternative Name:	NHERF1 / EBP50 (SLC9A3R1 Products)
Background:	SLC9A3 regulator 1,NHERF1 (Na ⁺ /H ⁺ exchanger regulatory factor 1), also known as EBP50 (ezrin, radixin, moesin-binding phosphoprotein 50) is an adaptor protein, which associates with beta-catenin and is required for its localization at the cell-cell junctions, interacts with various G protein-coupled receptors and regulates their traffic, as well as sodium-hydrogen exchange and sodium-dependent phosphate transport. NHERF1/EBP50 inhibits cell motility and is required to suppress anchorage-independent growth. It contains C-terminal ERM (ezrin, radixin, moesin)-binding region and two N-terminal PDZ (postsynaptic-density-95/disc-large/ZO1 homology) domains and is able to form head-to-tail intramolecular conformation to regulate its interactions.,EBP50, NPHLOP2, SLC9A3R1, SR1
Gene ID:	9368
UniProt:	014745
Pathways:	Proton Transport , Platelet-derived growth Factor Receptor Signaling , Negative Regulation of Transporter Activity , SARS-CoV-2 Protein Interactome

Application Details

Application Notes:	Immunohistochemistry (paraffin sections): Recommended dilution: 5 µg/mL. Western blotting: Recommended dilution: 2 µg/mL, reducing conditions, positive control: MCF-7 cell line
Restrictions:	For Research Use only

Handling

Concentration:	1 mg/mL
Buffer:	Phosphate buffered saline (PBS), pH 7.4, 15 mM sodium azide
Preservative:	Sodium azide
Precaution of Use:	This product contains Sodium azide: a POISONOUS AND HAZARDOUS SUBSTANCE which should be handled by trained staff only.
Handling Advice:	Do not freeze.
Storage:	4 °C
Storage Comment:	Store at 2-8°C. Do not freeze.



Western Blotting

Image 1. Western blotting analysis of human NHERF1 using mouse monoclonal antibody EBP-10 on lysates of Jurkat, MCF-7, and Daudi cells under reducing and non-reducing conditions. Nitrocellulose membrane was probed with 2 μ g/mL of mouse anti-NHERF1 monoclonal antibody followed by IRDye800-conjugated anti-mouse secondary antibody. NHERF1 was detected around 50 kDa.