

Datasheet for ABIN94459
anti-Prostate Specific Antigen antibody

4 Images

[Go to Product page](#)

Overview

Quantity:	0.1 mg
Target:	Prostate Specific Antigen (PSA)
Reactivity:	Human
Host:	Mouse
Clonality:	Monoclonal
Conjugate:	This Prostate Specific Antigen antibody is un-conjugated
Application:	ELISA, Western Blotting (WB), Immunohistochemistry (Paraffin-embedded Sections) (IHC (p))

Product Details

Immunogen:	30 kDa protein fraction prepared from human seminal plasma
Clone:	A67-B-E3
Isotype:	IgG1
Specificity:	The mouse monoclonal antibody A67-B/E3 reacts with prostate-specific antigen (PSA), a protein produced by normal prostate cells. The highest amounts of PSA are found in the seminal fluid. This antibody recognizes both free and complexed PSA.
Cross-Reactivity (Details):	Human
Purification:	Purified by protein-A affinity chromatography.
Purity:	> 95 % (by SDS-PAGE)

Target Details

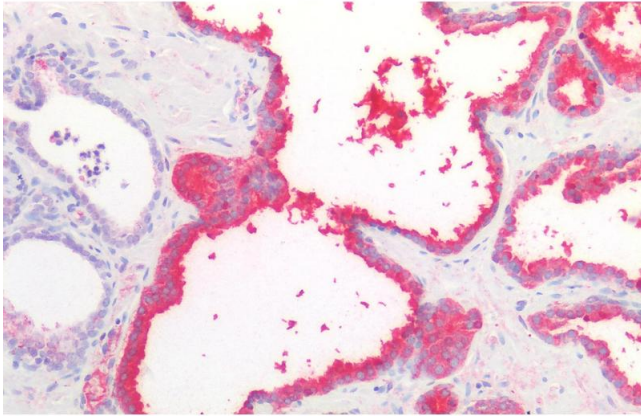
Target:	Prostate Specific Antigen (PSA)
Alternative Name:	Prostate-specific antigen (PSA) (PSA Products)
Background:	Kallikrein related peptidase 3,Prostate-specific antigen (PSA) is a protein produced by normal prostate cells. This enzyme participates in the dissolution of the seminal fluid coagulum and plays an important role in fertility. The highest amounts of PSA are found in the seminal fluid, some PSA escapes the prostate and can be found in the serum. This serum component has been used to track the response to therapy in men with prostate cancer.,Prostate-specific antigen, Kallikrein-3, Semenogelase, Semin
Gene ID:	354
UniProt:	P07288
Pathways:	Complement System

Application Details

Application Notes:	Western blotting: Positive material: seminal plasma, reducing conditions, recommended antibody dilution: 2-5 µg/mL.
Restrictions:	For Research Use only

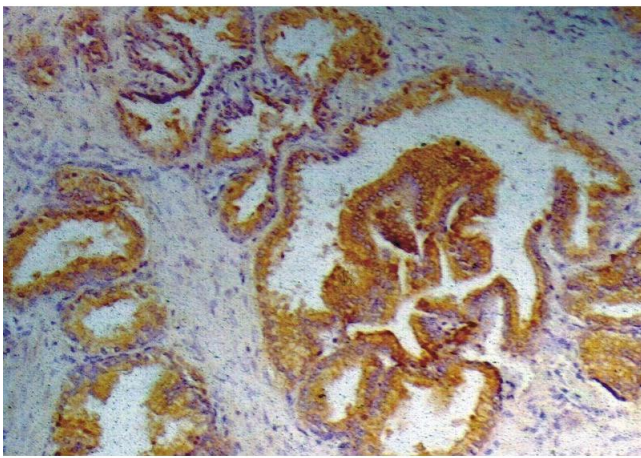
Handling

Concentration:	1 mg/mL
Buffer:	Phosphate buffered saline (PBS), pH 7.4, 15 mM sodium azide
Preservative:	Sodium azide
Precaution of Use:	This product contains Sodium azide: a POISONOUS AND HAZARDOUS SUBSTANCE which should be handled by trained staff only.
Handling Advice:	Do not freeze.
Storage:	4 °C
Storage Comment:	Store at 2-8°C. Do not freeze.



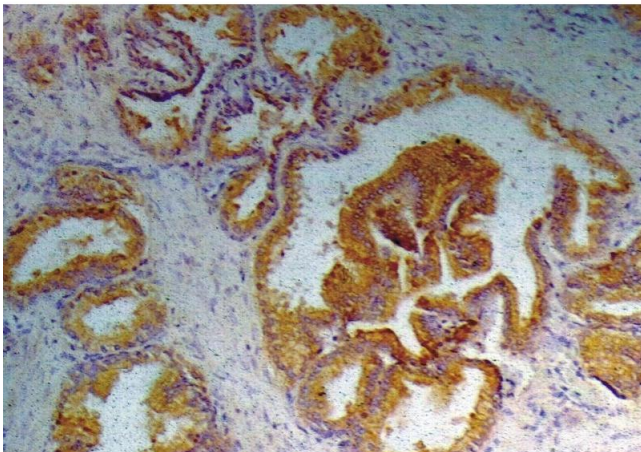
Immunohistochemistry (Paraffin-embedded Sections)

Image 1. Immunohistochemistry staining of human prostate (paraffin-embedded sections) with anti-PSA (A67-B/E3), 10 µg/mL.



Immunohistochemistry

Image 2. Immunohistochemistry of paraffin sections (prostate) Immunohistochemistry staining of prostate (paraffin-embedded sections) with anti-human Prostate-specific antigen (A67-B/E3).



Immunohistochemistry (Paraffin-embedded Sections)

Image 3. Immunohistochemistry staining of prostate (paraffin-embedded sections) with anti-human Prostate-specific antigen (A67-B/E3).

Please check the [product details page](#) for more images. Overall 4 images are available for ABIN94459.