



[Go to Product page](#)

Datasheet for ABIN94463
anti-CA 19-9 antibody

3 Images

1 Publication

Overview

Quantity:	0.1 mg
Target:	CA 19-9
Reactivity:	Human
Host:	Mouse
Clonality:	Monoclonal
Conjugate:	This CA 19-9 antibody is un-conjugated
Application:	ELISA, Immunohistochemistry (Paraffin-embedded Sections) (IHC (p))

Product Details

Immunogen:	Immunoprecipitate obtained after immunodiffusion of MAb 19-9 and mucins isolated from an ovarian cyst of a 0Le(a+b-) patient.
Clone:	121SLE
Isotype:	IgM
Specificity:	The antibody 121SLE recognizes Sialyl Lewis a-containing glycolipids (extracellular plasma membrane leaflet antigens).
Cross-Reactivity (Details):	Other not tested, Human
Purification:	Purified by sequential steps of physicochemical fractionation (differential precipitation and solid-phase chromatography methods).
Purity:	> 95 % (by SDS-PAGE)

Target Details

Target:	CA 19-9
Alternative Name:	Sialyl Lewis a (CA 19-9 Products)
Background:	CA-19.9

Application Details

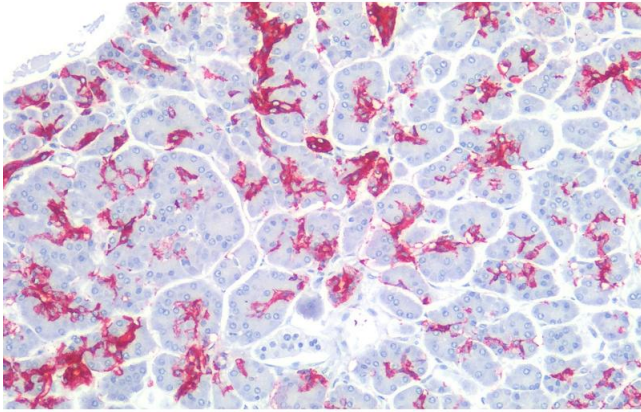
Application Notes:	Immunohistochemistry (paraffin sections): Recommended dilution: 10 µg/mL, positive control: colorectal adenocarcinoma, heat mediated antigen retrieval (sodium citrate), mAb incubation 1 hour / RT, detection DAB.
Restrictions:	For Research Use only

Handling

Concentration:	1 mg/mL
Buffer:	Tris buffered saline (TBS), pH 8.0, 15 mM sodium azide
Preservative:	Sodium azide
Precaution of Use:	This product contains Sodium azide: a POISONOUS AND HAZARDOUS SUBSTANCE which should be handled by trained staff only.
Handling Advice:	Do not freeze.
Storage:	4 °C
Storage Comment:	Store at 2-8°C. Do not freeze.

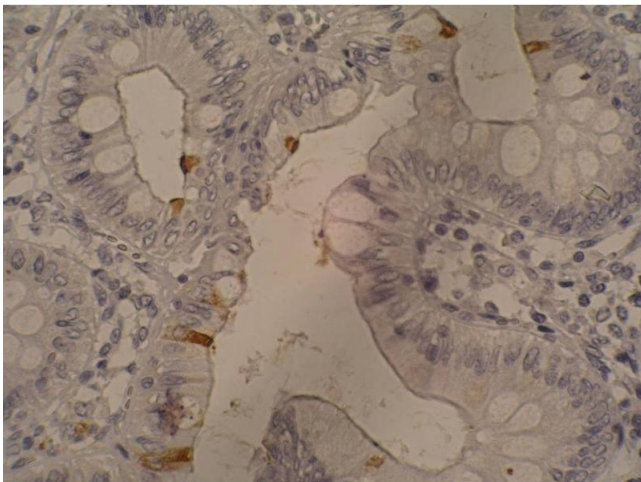
Publications

Product cited in:	Rye, Bovin, Vlasova, Molodyk, Baryshnikov, Kreutz, Garinther, Schultes, Noujaim, Madiyalakan, Magnani, Nilsson, Nilsson, Nustad, Norum, Bell, Cao, Suresh, Very, Freeman, Yeung, Hilgers: " Summary report on the ISOBM TD-6 workshop: analysis of 20 monoclonal antibodies against Sialyl Lewis a and related antigens. Montreux, Switzerland, September 19-24, 1997." in: Tumour biology , Vol. 19, Issue 5, pp. 390-420, (1998) (PubMed).
-------------------	-----------------------------------------------------------------------------------------------------------------------------------------------------------------------------------------------------------------------------------------------------------------------------------------------------------------------------------------------------------------------------------------------------------------------------------------------------------------------



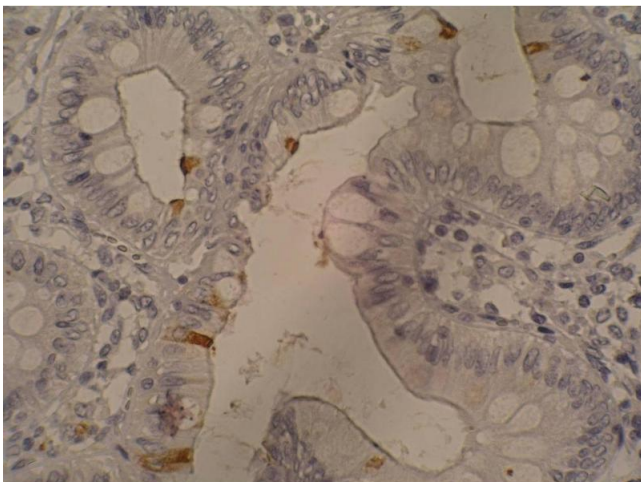
Immunohistochemistry (Paraffin-embedded Sections)

Image 1. Immunohistochemistry staining of human pancreas (paraffin-embedded sections) with anti-sialyl Lewis a (121SLE), 10 µg/mL.



Immunohistochemistry

Image 2. Immunohistochemistry staining of sialyl-Lewis a in colorectal adenocarcinoma (paraffin-embedded sections) with 121SLE antibody.



Immunohistochemistry (Paraffin-embedded Sections)

Image 3. Immunohistochemistry staining of sialyl-Lewis a in colorectal adenocarcinoma (paraffin-embedded sections) with 121SLE antibody.