



[Go to Product page](#)

Datasheet for ABIN94498

anti-Kinesin antibody (AA 331-906)

1 Image

1 Publication

Overview

Quantity:	0.1 mg
Target:	Kinesin
Binding Specificity:	AA 331-906
Reactivity:	Human, Mouse, Pig
Host:	Rabbit
Clonality:	Polyclonal
Conjugate:	This Kinesin antibody is un-conjugated
Application:	Western Blotting (WB), Immunocytochemistry (ICC)

Product Details

Immunogen:	stalk domain of human kinesin (aa 331-906) expressed in <i>E. coli</i> (FKHC3)
Specificity:	The polyclonal antibody detects total level of endogenous kinesin protein (intracellular antigen).
Cross-Reactivity (Details):	Human, Mouse, Porcine, Other not tested
Purification:	Purified by ligand affinity chromatography.
Purity:	> 95 % (by SDS-PAGE)

Target Details

Target:	Kinesin
Abstract:	Kinesin Products
Background:	Kinesin belongs to the group of microtubule-associated motor proteins known to convert

Target Details

chemical energy released from nucleoside triphosphates (preferentially from ATP) into mechanical energy. Conventional kinesin, member of the kinesin superfamily comprising more than 100 proteins, is involved in the anterograde vesicle transport in neuronal cells. Kinesin purified from mammalian brain homogenates is a heterotetramer consisting of two heavy (120 to 130 kDa) and two light chains (60 to 70 kDa), resulting in a molecular mass about 400 kDa. Each heavy chain contains an N-terminal globular motordomain with both a microtubule-binding site and an ATPase active center, stalk region responsible for heavy chain dimerization and finally C-terminal globular tail domain, which is implicated in cargo binding. Light chains may have a regulatory function.,KIN

Application Details

Application Notes: Optimal working dilution should be determined by the investigator.

Restrictions: For Research Use only

Handling

Concentration: 1 mg/mL

Buffer: Phosphate buffered saline (PBS), pH 7.4, 15 mM sodium azide

Preservative: Sodium azide

Precaution of Use: This product contains Sodium azide: a POISONOUS AND HAZARDOUS SUBSTANCE which should be handled by trained staff only.

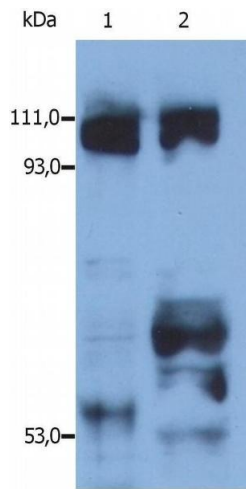
Handling Advice: **Do not freeze.**

Storage: 4 °C

Storage Comment: Store at 2-8°C. Do not freeze.

Publications

Product cited in: Malcová-Janatová, Richterová, Dráber, Hasek: "Preparation of human recombinant kinesin heavy chain and epitope mapping of its structural domains." in: **Folia microbiologica**, Vol. 49, Issue 6, pp. 665-70, (2005) ([PubMed](#)).



Western Blotting

Image 1. Detection of kinesin in reduced lysates of human HEK cell line (1) and porcine brain (2) by rabbit polyclonal anti-kinesin.