

Datasheet for ABIN94499  
**anti-LIME antibody (AA 141-295)**[Go to Product page](#)

2 Images

1 Publication

## Overview

Quantity:	0.1 mg
Target:	LIME (LIME1)
Binding Specificity:	AA 141-295
Reactivity:	Human
Host:	Rabbit
Clonality:	Polyclonal
Conjugate:	This LIME antibody is un-conjugated
Application:	Western Blotting (WB), Immunohistochemistry (Paraffin-embedded Sections) (IHC (p))

## Product Details

Immunogen:	Bacterially expressed intracellular fragment corresponding to aa 141-295 of human LIME.
Specificity:	The polyclonal antibody reacts with the cytoplasmic domain of LIME, a 30 kDa Lck-interacting transmembrane adaptor expressed by T cells.
No Cross-Reactivity:	Mouse
Cross-Reactivity (Details):	Human
Purification:	Purified by protein-A affinity chromatography.
Purity:	> 95 % (by SDS-PAGE)

## Target Details

Target:	LIME (LIME1)
---------	--------------

## Target Details

Alternative Name: LIME ([LIME1 Products](#))

Background: Lck interacting transmembrane adaptor 1, LIME (Lck-interacting molecule) is a 30 kDa double-palmitoylated protein with unusually basic cytoplasmic domain, expressed by T cells. After ligation of CD4 or CD8 T cell coreceptors, LIME is phosphorylated by Src-family kinases and associates with Lck and Fyn kinases and with their negative regulator Csk. Interestingly, Csk-mediated phosphorylation of C-terminal negative-regulatory tyrosine of LIME-associated Lck can result in increase of enzymatic activity compared with the total pool of Lck, thus, LIME serves as a positive regulator of TCR-dependent T cell signaling. However, under some circumstances, LIME may mediate inhibitory signals., LITA1

Gene ID: 54923

UniProt: [Q9H400](#)

## Application Details

Application Notes: Optimal working dilution should be determined by the investigator.

Restrictions: For Research Use only

## Handling

Concentration: 1 mg/mL

Buffer: Phosphate buffered saline (PBS), pH 7.4, 15 mM sodium azide

Preservative: Sodium azide

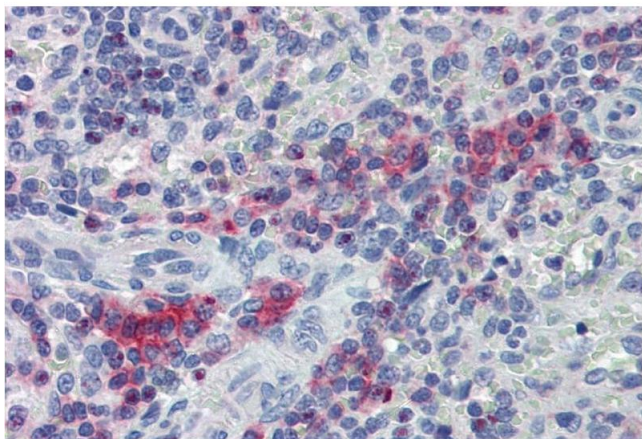
Handling Advice: **Do not freeze.**

Storage: 4 °C

Storage Comment: Store at 2-8°C. Do not freeze.

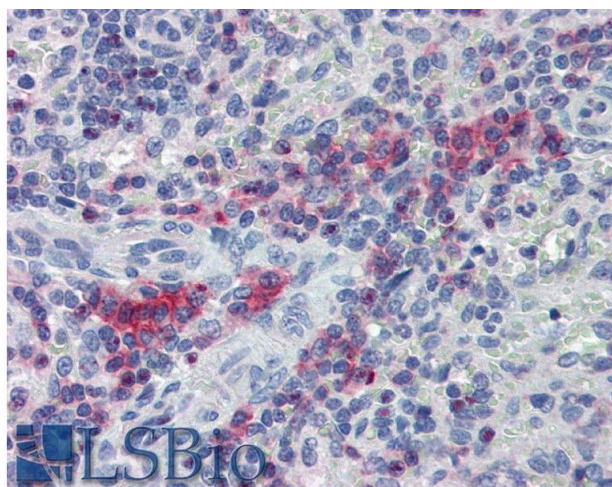
## Publications

Product cited in: Brdicková, Brdicka, Angelisová, Horváth, Spicka, Hilgert, Paces, Simeoni, Kliche, Merten, Schraven, Horejsí: "LIME: a new membrane Raft-associated adaptor protein involved in CD4 and CD8 coreceptor signaling." in: **The Journal of experimental medicine**, Vol. 198, Issue 10, pp. 1453-62, (2003) ([PubMed](#)).



#### Immunohistochemistry (Paraffin-embedded Sections)

**Image 1.** Immunohistochemistry staining of human spleen (paraffin sections) with anti-LIME polyclonal antibody.



#### Immunohistochemistry

**Image 2.** Immunohistochemistry staining of human spleen (paraffin sections) with anti-LIME polyclonal antibody. Commercially tested by LifeSpan BioSciences.