



[Go to Product page](#)

Datasheet for ABIN947565

anti-APEX1 antibody (AA 1-318)

5 Images

Overview

Quantity:	100 µL
Target:	APEX1
Binding Specificity:	AA 1-318
Reactivity:	Human
Host:	Rabbit
Clonality:	Polyclonal
Conjugate:	This APEX1 antibody is un-conjugated
Application:	Western Blotting (WB), Immunofluorescence (IF), Immunoprecipitation (IP)

Product Details

Purpose:	Rabbit polyclonal antibody raised against a full-length human APEX1 protein.
Immunogen:	APEX1 (NP_001632.1, 1 a.a. ~ 318 a.a) full-length human protein.
Sequence:	MPKRGKKGAV AEDGDEL RTE PEAKKSKTAA KKNDKEAAGE GPALYEDPPD HKTSPSGKPA TLKICSWNVD GLRAWIKKKG LDWVKEEAPD ILCLQETKCS ENKLP AELQE LPGLSHQYWS APSDKEGYSG VGLLSRQCPL KVSYGIGDEE HDQEGRVIVA EFDSFVLVTA YVPNAGRGLV RLEYRQRWDE AFRKFLKGLA SRKPLVLCGD LNVAHEEIDL RNPKGKKNKA GFTPQERQGF GELLQAVPLA DSRHLYPNT PYAYTFWTYM MNARSKNVGW RLDYFLLSHS LLPALCDSKI RSKALGSDHC PITLYLAL
Cross-Reactivity:	Human
Characteristics:	Antibody reactive against mammalian transfected lysate.

Target Details

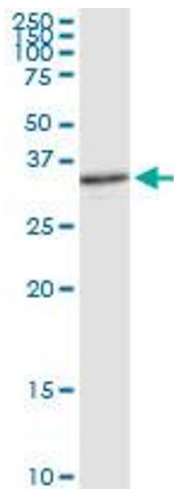
Target:	APEX1
Alternative Name:	APEX1 (APEX1 Products)
Background:	Full Gene Name: APEX nuclease (multifunctional DNA repair enzyme) 1 Synonyms: APE,APE-1,APE1,APEN,APEX,APX,HAP1,REF-1,REF1
Gene ID:	328
NCBI Accession:	NM_001641
Pathways:	DNA Damage Repair , Chromatin Binding , Cell RedoxHomeostasis , Smooth Muscle Cell Migration , Positive Regulation of Response to DNA Damage Stimulus

Application Details

Application Notes:	Optimal working dilution should be determined by the investigator.
Restrictions:	For Research Use only

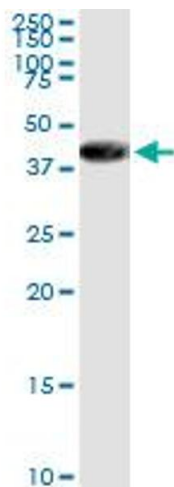
Handling

Format:	Liquid
Buffer:	No additive
Preservative:	Without preservative
Handling Advice:	Aliquot to avoid repeated freezing and thawing.
Storage:	-20 °C
Storage Comment:	Store at -20°C or lower. Aliquot to avoid repeated freezing and thawing.



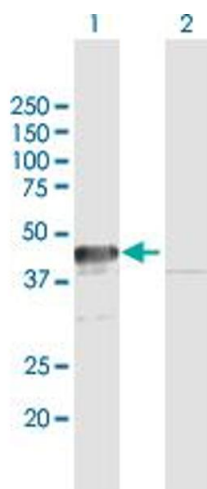
Western Blotting

Image 1. APEX1 MaxPab rabbit polyclonal antibody. Western Blot analysis of APEX1 expression in K-562.



Immunoprecipitation

Image 2. Immunoprecipitation of APEX1 transfected lysate using anti-APEX1 MaxPab rabbit polyclonal antibody and Protein A Magnetic Bead , and immunoblotted with APEX1 purified MaxPab mouse polyclonal antibody (B01P) .



Western Blotting

Image 3. Western Blot analysis of APEX1 expression in transfected 293T cell line by APEX1 MaxPab polyclonal antibody.

Lane 1: APEX1 transfected lysate(34.98 KDa).

Lane 2: Non-transfected lysate.

Please check the [product details page](#) for more images. Overall 5 images are available for ABIN947565.