



[Go to Product page](#)

Datasheet for ABIN947574
anti-APRT antibody (AA 1-180)

3 Images

Overview

Quantity:	100 µL
Target:	APRT
Binding Specificity:	AA 1-180
Reactivity:	Human
Host:	Rabbit
Clonality:	Polyclonal
Conjugate:	This APRT antibody is un-conjugated
Application:	Western Blotting (WB), Immunoprecipitation (IP)

Product Details

Purpose:	Rabbit polyclonal antibody raised against a full-length human APRT protein.
Immunogen:	APRT (NP_000476.1, 1 a.a. ~ 180 a.a) full-length human protein.
Sequence:	MADSELQLVE QRIRSFDFP TPGVVFRDIS PVLKDPASFR AAIGLLARHL KATHGGRIDY IAGLDSRGFL FGPSLAQELG LGCVLIRKRG KLPGPTLWAS YSLEYGKAEL EIQKDALEPG QRVVVVDDLL ATGGTMNAAC ELLGRLQAEV LECVSLVELT SLKGREKLAP VPFSSLLQYE
Cross-Reactivity:	Human
Characteristics:	Antibody reactive against mammalian transfected lysate.

Target Details

Target:	APRT
---------	------

Target Details

Alternative Name:	APRT (APRT Products)
Background:	Full Gene Name: adenine phosphoribosyltransferase Synonyms: AMP,DKFZp686D13177,MGC125856,MGC125857,MGC129961
Gene ID:	353
NCBI Accession:	NM_000485
Pathways:	Ribonucleoside Biosynthetic Process

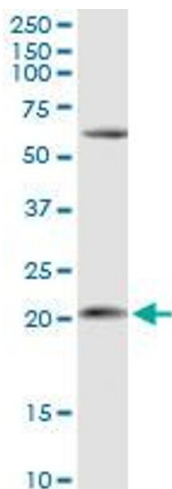
Application Details

Application Notes:	Optimal working dilution should be determined by the investigator.
Restrictions:	For Research Use only

Handling

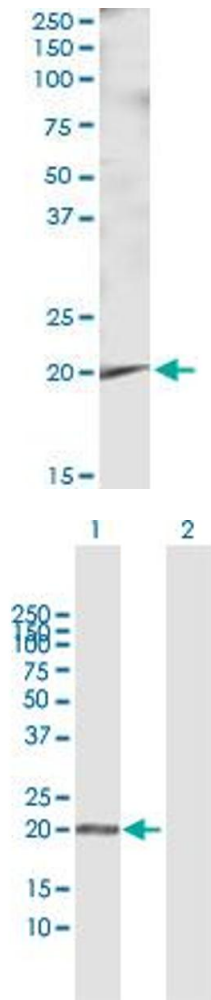
Format:	Liquid
Buffer:	No additive
Preservative:	Without preservative
Handling Advice:	Aliquot to avoid repeated freezing and thawing.
Storage:	-20 °C
Storage Comment:	Store at -20°C or lower. Aliquot to avoid repeated freezing and thawing.

Images



Western Blotting

Image 1. APRT MaxPab rabbit polyclonal antibody. Western Blot analysis of APRT expression in K-562.



Immunoprecipitation

Image 2. Immunoprecipitation of APRT transfected lysate using anti-APRT MaxPab rabbit polyclonal antibody and Protein A Magnetic Bead , and immunoblotted with APRT purified MaxPab mouse polyclonal antibody (B01P) .

Western Blotting

Image 3. Western Blot analysis of APRT expression in transfected 293T cell line by APRT MaxPab polyclonal antibody.

Lane 1: APRT transfected lysate(19.60 kDa).

Lane 2: Non-transfected lysate.