

Datasheet for ABIN947614
anti-BMP1 antibody (AA 1-622)



[Go to Product page](#)

1 Image

Overview

Quantity:	50 µg
Target:	BMP1
Binding Specificity:	AA 1-622
Reactivity:	Human
Host:	Mouse
Clonality:	Polyclonal
Conjugate:	This BMP1 antibody is un-conjugated
Application:	Western Blotting (WB)

Product Details

Purpose:	Mouse polyclonal antibody raised against a full-length human BMP1 protein.
Immunogen:	BMP1 (ENSP00000307408, 1 a.a. ~ 622 a.a) full-length human protein.
Sequence:	MPGVARLPLL LGLLLLPRPG RPLDLADYTY DLAEEDDSEP LNYKDPCCAA AFLGDIALDE EDLRAFQVQQ AVDLRRHTAR KSSIKAAVPG NTSTPSCQST NGQPQRGACG RWRGRSRSRR AATSRPERVW PDGVIPFVIG GNFTGSQRAV FRQAMRHWEK HTCVTFLERT DEDSYIVFTY RPCGCCSYVG RRGGGPQAIS IGKNCDFGI VVHELGHVVG FWHEHTRPDR DRHVSIVREN IQPGQEYNFL KMEPQEVESL GETYDFDSIM HYARNTFSRG IFLDTIVPKY EVNGVKPPIG QRTRLSKEDI AQARKLYKCP ACGETLQDST GNFSSPEYPN GYSAHMHCVW RISVTPGEKI ILNFTSLDLY RSRLCWYDYV EVRDGFWRKA PLRGRFCGSK LPEPIVSTDS RLWVEFRSSS NWWGKGGFAV YEAICGGDVK KDYGHIQSPN YPDDYRPSKV CIWRIQVSEG FHVGLTFQSF EIERHDSCAY DYLEVRDGHS ESSTLIGRYC GYEKPDDIKS TSSRLWLK FV SDGSINKAGF AVNFFKEVDE CSRPNRGGCE QRCLNTLGSY KCSCDPGYEL APDKRRCEGC YDLQVKGPLL

Product Details

WDRHCFRLST HGPEMLGTAL RG

Cross-Reactivity: Human

Characteristics: Antibody reactive against mammalian transfected lysate.

Target Details

Target: BMP1

Alternative Name: BMP1 ([BMP1 Products](#))

Background: Full Gene Name: bone morphogenetic protein 1
Synonyms: FLJ44432,PCOLC,PCP,TLD,pCP-2

Gene ID: 649

Pathways: [Lipid Metabolism](#)

Application Details

Application Notes: Optimal working dilution should be determined by the investigator.

Restrictions: For Research Use only

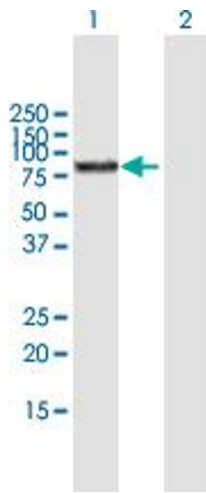
Handling

Buffer: In 1x PBS, pH 7.4

Handling Advice: Aliquot to avoid repeated freezing and thawing.

Storage: -20 °C

Storage Comment: Store at -20°C or lower. Aliquot to avoid repeated freezing and thawing.



Western Blotting

Image 1. Western Blot analysis of BMP1 expression in transfected 293T cell line by BMP1 MaxPab polyclonal antibody.

Lane 1: BMP1 transfected lysate(68.42 KDa).

Lane 2: Non-transfected lysate.