

Datasheet for ABIN947621
anti-C1S antibody (AA 1-688)



[Go to Product page](#)

4 Images

Overview

Quantity:	100 µL
Target:	C1S
Binding Specificity:	AA 1-688
Reactivity:	Human
Host:	Rabbit
Clonality:	Polyclonal
Conjugate:	This C1S antibody is un-conjugated
Application:	Western Blotting (WB), Immunoprecipitation (IP)

Product Details

Purpose:	Rabbit polyclonal antibody raised against a full-length human C1S protein.
Immunogen:	C1S (NP_001725.1, 1 a.a. ~ 688 a.a) full-length human protein.
Sequence:	MWCIVLFSLL AWVYAEPTMY GEILSPNYPQ AYPSEVEKSW DIEVPEGYGI HLYFTHLDIE LSENCAYDSV QIISGDTEEG RLCGQRSSNN PHSPIVEEFQ VPYNKLQVIF KSDFSNEERF TGFAAYYVAT DINECTDFVD VPCSHFCNNF IGGYFCSCPP EYFLHDDMKN CGVNCSGDVF TALIGEIASP NYPKYPENS RCEYQIRLEK GFQVVVTLRR EDFDVEAADS AGNCLDSLVE VAGDRQFGPY CGHGFPGPLN IETKSNALDI IFQDLDLGGQK KGWKLRYHGD PMPCPKEDTP NSWWEPAKAK YVFRDVVQIT CLDGFVEVVEG RVGATSFYST CQSNKGWSNS KLKCPVDCG IPESIENGKV EDPESTLFGS VIRYTCEEPY YMENGSGGGE YHCAGNGSWV NEVLGPELPK CVPVCGVPRE PFEEKQRIIG GSDADIKNFP WQVFFDNPWA GGALINEYWV LTAHVVEGN REPTMYVGST SVQTSRLAKS KMLTPEHVFI HPGWKLLEVP EGRTNFDNDI ALVRLKDPVK MGPTVSPICL PGTSSDYNLM DGDGLGISGW GRTEKRDRAV RLKAARLPVA PLRKCKEVKV

Product Details

EKPTADAEAY VFTPNMICAG GEKGMDSCKG DSGGAFVQD PNDKTKFYAA GLVSWGPQCG
TYGLYTRVKN YVDWIMKTMQ ENSTPRED

Cross-Reactivity: Human

Characteristics: Antibody reactive against mammalian transfected lysate.

Target Details

Target: C1S

Alternative Name: C1S ([C1S Products](#))

Background: Full Gene Name: complement component 1, s subcomponent
Synonyms: FLJ44757

Gene ID: 716

NCBI Accession: [NM_001734](#)

Pathways: [Complement System](#)

Application Details

Application Notes: Optimal working dilution should be determined by the investigator.

Restrictions: For Research Use only

Handling

Format: Liquid

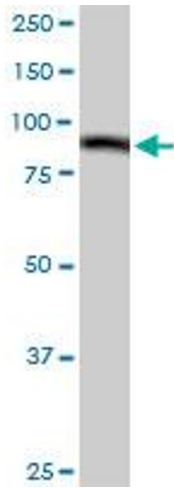
Buffer: No additive

Preservative: Without preservative

Handling Advice: Aliquot to avoid repeated freezing and thawing.

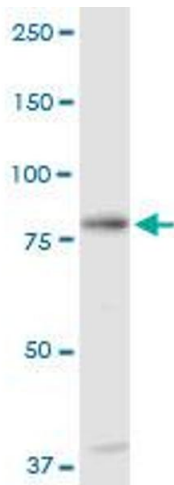
Storage: -20 °C

Storage Comment: Store at -20°C or lower. Aliquot to avoid repeated freezing and thawing.



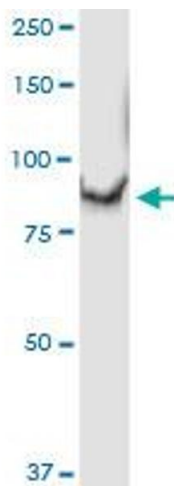
Western Blotting

Image 1. C1S MaxPab rabbit polyclonal antibody. Western Blot analysis of C1S expression in human kidney.



Western Blotting

Image 2. C1S MaxPab rabbit polyclonal antibody. Western Blot analysis of C1S expression in A-431.



Immunoprecipitation

Image 3. Immunoprecipitation of C1S transfected lysate using anti-C1S MaxPab rabbit polyclonal antibody and Protein A Magnetic Bead, and immunoblotted with C1S purified MaxPab mouse polyclonal antibody (B01P).

Please check the [product details page](#) for more images. Overall 4 images are available for ABIN947621.