



[Go to Product page](#)

Datasheet for ABIN947628  
**anti-C4BPA antibody (AA 1-597)**

1 Image

Overview

Quantity:	50 µg
Target:	C4BPA
Binding Specificity:	AA 1-597
Reactivity:	Human
Host:	Mouse
Clonality:	Polyclonal
Conjugate:	This C4BPA antibody is un-conjugated
Application:	Western Blotting (WB)

Product Details

Purpose:	Mouse polyclonal antibody raised against a full-length human C4BPA protein.
Immunogen:	C4BPA (NP_000706.1, 1 a.a. ~ 597 a.a) full-length human protein.
Sequence:	MHPPKTPSGA LHRKRKMAAW PFSRLWKVSD PILFQMTLIA ALLPAVLGNC GPPPTLSFAA PMDITLTETR FKTGTTLKYT CLPGYVRSHS TQTLTCNSDG EWVYNTFCIY KRCRHPGELR NGQVEIKTDL SFGSQIEFSC SEGFFLIGST TSRCEVQDRG VGWSHPLPQC EIVKCKPPPD IRNGRHSCEE NFYAYGFSVT YSCDPRFSLG GHASISCTVE NETIGVWRPS PPTCEKITCR KPDVSHGEMV SGFGPIYNYK DTIVFKCQKG FVLRGSSVIH CDADSKWNPS PPACPNSCI NLPDIPHASW ETYPRPTKED VYVVGTVLRY RCHPGYKPTT DEPTTVICQK NLRWTPYQGC EALCCPEPKL NNGEITQHRK SRPANHCVYF YGDEISFSCH ETSRFSIAICQ GDGTWSPRTP SCGDICNFPP KIAHGHYKQS SSYSFFKEEI IYECDKGYIL VGQAKLSCSY SHWSAPAPQC KALCRKPELV NGRLSVDKDQ YVEPENVTIQ CDSGYGVVGP QSITCSGNRT WYPEVPKCEW ETPEGCEQVL TGKRLMQCLP NPEDVKMALE VYKLSLEIEQ LELQRDSARQ STLDKEL

## Product Details

---

Cross-Reactivity:	Human
Characteristics:	Antibody reactive against mammalian transfected lysate.

## Target Details

---

Target:	C4BPA
Alternative Name:	C4BPA ( <a href="#">C4BPA Products</a> )
Background:	Full Gene Name: complement component 4 binding protein, alpha Synonyms: C4BP,PRP
Gene ID:	722
NCBI Accession:	<a href="#">NM_000715</a>
Pathways:	<a href="#">Complement System</a>

## Application Details

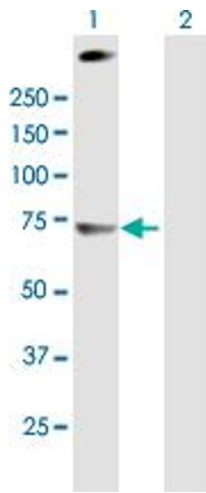
---

Application Notes:	Optimal working dilution should be determined by the investigator.
Restrictions:	For Research Use only

## Handling

---

Buffer:	In 1x PBS, pH 7.4
Handling Advice:	Aliquot to avoid repeated freezing and thawing.
Storage:	-20 °C
Storage Comment:	Store at -20°C or lower. Aliquot to avoid repeated freezing and thawing.



### Western Blotting

**Image 1.** Western Blot analysis of C4BPA expression in transfected 293T cell line by C4BPA MaxPab polyclonal antibody.

Lane 1: C4BPA transfected lysate(65.67 KDa).

Lane 2: Non-transfected lysate.