

Datasheet for ABIN947646  
**anti-CBFB antibody (AA 1-187)**[Go to Product page](#)

## 1 Image

## Overview

Quantity:	50 µg
Target:	CBFB
Binding Specificity:	AA 1-187
Reactivity:	Human
Host:	Mouse
Clonality:	Polyclonal
Conjugate:	This CBFB antibody is un-conjugated
Application:	Western Blotting (WB)

## Product Details

Purpose:	Mouse polyclonal antibody raised against a full-length human CBFB protein.
Immunogen:	CBFB (NP_074036.1, 1 a.a. ~ 187 a.a) full-length human protein.
Sequence:	MPRVVPDQRS KFENEFFRK LSRECEIKYT GFRDRPHEER QARFQNACRD GRSEIAFVAT GTNLSLQFFP ASWQGEQRQT PSREYVDLER EAGKVYLKAP MILNGVCVIW KGWIDLQRLD GMGCLEFDEE RAQQEDALAQ QAFEEARRRT REFEDRDRSH REEMEARRQQ DPSPGSNLGG GDDLKLR
Cross-Reactivity:	Human
Characteristics:	Antibody reactive against mammalian transfected lysate.

## Target Details

Target:	CBFB
---------	------

## Target Details

Alternative Name:	CBFB ( <a href="#">CBFB Products</a> )
Background:	Full Gene Name: core-binding factor, beta subunit Synonyms: PEBP2B
Gene ID:	865
NCBI Accession:	<a href="#">NM_022845</a>
Pathways:	<a href="#">Regulation of Lipid Metabolism by PPARalpha</a>

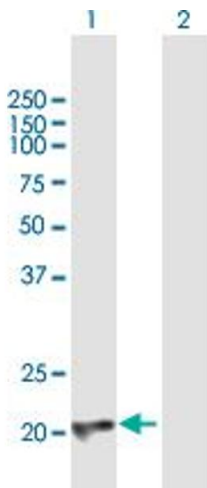
## Application Details

Application Notes:	Optimal working dilution should be determined by the investigator.
Restrictions:	For Research Use only

## Handling

Buffer:	In 1x PBS, pH 7.4
Handling Advice:	Aliquot to avoid repeated freezing and thawing.
Storage:	-20 °C
Storage Comment:	Store at -20°C or lower. Aliquot to avoid repeated freezing and thawing.

## Images



### Western Blotting

**Image 1.** Western Blot analysis of CBFB expression in transfected 293T cell line by CBFB MaxPab polyclonal antibody.

Lane 1: CBFB transfected lysate(20.57 KDa).

Lane 2: Non-transfected lysate.