



[Go to Product page](#)

Datasheet for ABIN947710  
**anti-CLTA antibody (AA 118-176)**

3 Images

Overview

Quantity:	100 µg
Target:	CLTA
Binding Specificity:	AA 118-176
Reactivity:	Human
Host:	Mouse
Clonality:	Monoclonal
Conjugate:	This CLTA antibody is un-conjugated
Application:	Western Blotting (WB), ELISA

Product Details

Purpose:	Mouse monoclonal antibody raised against a partial recombinant CLTA.
Immunogen:	CLTA (NP_001824.1, 118 a.a. ~ 176 a.a) partial recombinant protein with GST tag. MW of the GST tag alone is 26 KDa.
Sequence:	MERLEALDAN SRKQEA EWKE KAIKELEEWY ARQDEQLQKT KANNRAAEEA FVNDIDESS
Clone:	4E9
Isotype:	IgG2a
Cross-Reactivity:	Human
Characteristics:	Antibody Reactive Against Recombinant Protein.

## Target Details

Target:	CLTA
Alternative Name:	CLTA ( <a href="#">CLTA Products</a> )
Background:	Full Gene Name: clathrin, light chain (Lca) Synonyms: LCA
Gene ID:	1211
NCBI Accession:	<a href="#">NM_001833</a>
Pathways:	<a href="#">EGFR Signaling Pathway</a> , <a href="#">Neurotrophin Signaling Pathway</a> , <a href="#">EGFR Downregulation</a>

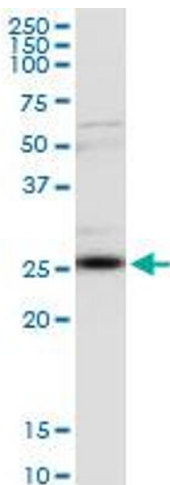
## Application Details

Application Notes:	Optimal working dilution should be determined by the investigator.
Restrictions:	For Research Use only

## Handling

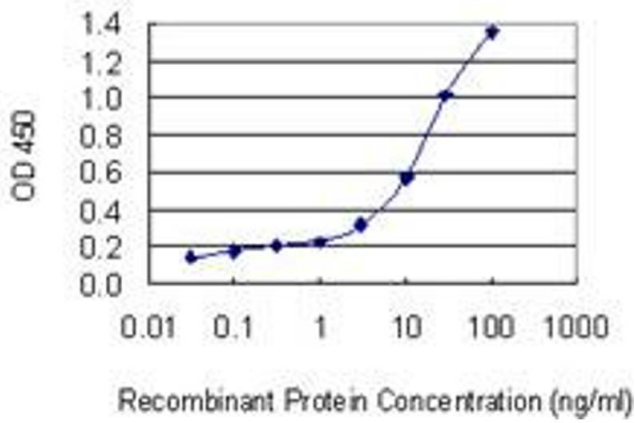
Buffer:	In 1x PBS, pH 7.4
Handling Advice:	Aliquot to avoid repeated freezing and thawing.
Storage:	-20 °C
Storage Comment:	Store at -20°C or lower. Aliquot to avoid repeated freezing and thawing.

## Images



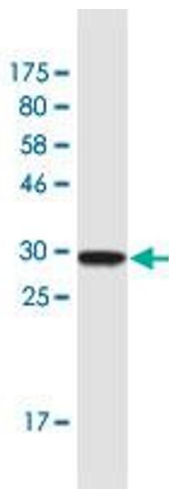
### Western Blotting

**Image 1.** CLTA monoclonal antibody (M08), clone 4E9.  
Western Blot analysis of CLTA expression in human kidney.



### ELISA

**Image 2.** Detection limit for recombinant GST tagged CLTA is 0.03 ng/ml as a capture antibody.



### Western Blotting

**Image 3.** Western Blot detection against Immunogen (32.23 kDa).