



[Go to Product page](#)

Datasheet for ABIN947717

## anti-CNTF antibody (AA 1-200)

### 1 Image

#### Overview

Quantity:	50 µg
Target:	CNTF
Binding Specificity:	AA 1-200
Reactivity:	Human
Host:	Mouse
Clonality:	Polyclonal
Conjugate:	This CNTF antibody is un-conjugated
Application:	Western Blotting (WB)

#### Product Details

Purpose:	Mouse polyclonal antibody raised against a full-length human CNTF protein.
Immunogen:	CNTF (NP_000605.1, 1 a.a. ~ 200 a.a) full-length human protein.
Sequence:	MAFTEHSPLT PHRRDLCSRS IWLARKIRSD LTALTESYVK HQGLNKNINL DSADGMPVAS TDQWSELTEA ERLQENLQAY RTFHVLLARL LEDQQVHFTP TEGDFHQAIH TLLLQVAafa YQIEELMILL EYKIPRNEAD GMPINVDGG LFEKKLWGLK VLQELSQWTV RSIHDLRFIS SHQTGIPARG SHYIANNKKM
Cross-Reactivity:	Human
Characteristics:	Antibody reactive against mammalian transfected lysate.

#### Target Details

Target:	CNTF
---------	------

## Target Details

Alternative Name:	CNTF (CNTF Products)
Background:	Full Gene Name: ciliary neurotrophic factor Synonyms: HCNTF
Gene ID:	1270
NCBI Accession:	<a href="#">NM_000614</a>
Pathways:	<a href="#">JAK-STAT Signaling</a>

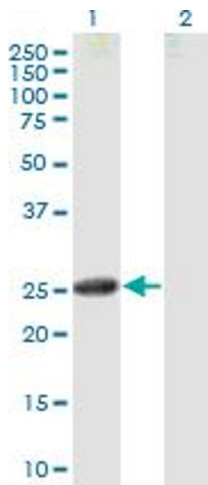
## Application Details

Application Notes:	Optimal working dilution should be determined by the investigator.
Restrictions:	For Research Use only

## Handling

Buffer:	In 1x PBS, pH 7.4
Handling Advice:	Aliquot to avoid repeated freezing and thawing.
Storage:	-20 °C
Storage Comment:	Store at -20°C or lower. Aliquot to avoid repeated freezing and thawing.

## Images



### Western Blotting

**Image 1.** Western Blot analysis of CNTF expression in transfected 293T cell line by CNTF MaxPab polyclonal antibody.

Lane 1: CNTF transfected lysate(22 KDa).

Lane 2: Non-transfected lysate.