



[Go to Product page](#)

Datasheet for ABIN947735
anti-CRYM antibody (AA 1-314)

1 Image

Overview

Quantity:	50 µg
Target:	CRYM
Binding Specificity:	AA 1-314
Reactivity:	Human
Host:	Mouse
Clonality:	Polyclonal
Conjugate:	This CRYM antibody is un-conjugated
Application:	Western Blotting (WB)

Product Details

Purpose:	Mouse polyclonal antibody raised against a full-length human CRYM protein.
Immunogen:	CRYM (NP_001879.1, 1 a.a. ~ 314 a.a) full-length human protein.
Sequence:	MSRVP AFLSA AEVEEHLRSS SLLIPPLETA LANFSSGPEG GVMQPVRTV VPTKHRGYLG VMPAYSAAED ALTKLVTFY EDRGITSVVP SHQATVLLFE PSNGTLLAVM DGNVITAKRT AAVSAIATKF LKPPSSEVLC ILGAGVQAYS HYEIFTEQFS FKEVRIWNRT KENAEKFADT VQGEVRVCSS VQEAVAGADV IITVTLATEP ILFGEVVKPG AHINAVGASR PDWRELDDEL MKEAVLYVDS QEALKESGD VLLSGAEIFA ELGEVIKGVK PAHCEKTTVF KSLGMAVEDT VAAKLIYDSW SSGK
Cross-Reactivity:	Human
Characteristics:	Antibody reactive against mammalian transfected lysate.

Target Details

Target:	CRYM
Alternative Name:	CRYM (CRYM Products)
Background:	Full Gene Name: crystallin, mu Synonyms: DFNA40,THBP
Gene ID:	1428
NCBI Accession:	NM_001888
Pathways:	Hormone Transport, Sensory Perception of Sound

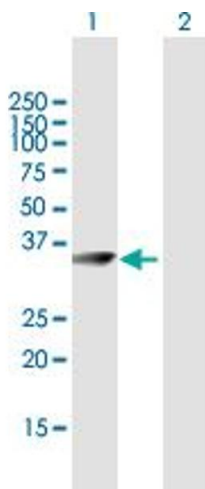
Application Details

Application Notes:	Optimal working dilution should be determined by the investigator.
Restrictions:	For Research Use only

Handling

Buffer:	In 1x PBS, pH 7.4
Handling Advice:	Aliquot to avoid repeated freezing and thawing.
Storage:	-20 °C
Storage Comment:	Store at -20°C or lower. Aliquot to avoid repeated freezing and thawing.

Images



Western Blotting

Image 1. Western Blot analysis of CRYM expression in transfected 293T cell line by CRYM MaxPab polyclonal antibody.

Lane 1: CRYM transfected lysate(34.54 kDa).

Lane 2: Non-transfected lysate.