



## Datasheet for ABIN947781 anti-DBH antibody (AA 1-603)



[Go to Product page](#)

### 1 Image

#### Overview

Quantity:	50 µg
Target:	DBH
Binding Specificity:	AA 1-603
Reactivity:	Human
Host:	Mouse
Clonality:	Polyclonal
Conjugate:	This DBH antibody is un-conjugated
Application:	Western Blotting (WB)

#### Product Details

Purpose:	Mouse polyclonal antibody raised against a full-length human DBH protein.
Immunogen:	DBH (ABW03484.1, 1 a.a. ~ 603 a.a) full-length human protein.
Sequence:	MREAAFMYST AVAIFLVILV AALQGSAPRE SPLPYHIPLD PEGSLELSWN VSYTQEAIHF QLLVRRLLKAG VLFGMSDRGE LENADLVVLW TDGDTAYFAD AWSQKQGIH LDPQQDYQLL QVQRTPEGLT LLFKRPFQTC DPKDYLIEDG TVHLYVGILE EPFRSLEAIN GSQLQMGLQR VQLLKPNIFE PELPSDACTM EVQAPNIQIP SQETTYWCYI KELPKGFSRH HIIKYEPIVT KGNEALVHHM EVFQCAPEMD SVPHFSGPCD SKMKPDRLNY CRHVLAAWAL GAKAFYYPEE AGLAFGGPGS SRYLRLEVHY HNPLVIEGRN DSSGIRLYYT AKLRRFNAGI MELGLVYTPV MAIPPRETAF ILTGCTDKC TQLALPPSGI HIFASQLHTH LTGRKVVTVL VRDGREWEIV NQDNHYSPIHF QEIRMLKKV SVHPGDVLIT SCTYNTEDRE LATVGGFGIL EEMCVNYVHY YPQTQLELCK SAVDAGFLQK YFHILNRFNN EDVCTCPQAS VSQQFTSVPW NSFNRDLKA LYSFAPISMH CNKSSAVRFQ GEWNLQPLPK VISTLEEPTP QCPTSQGRSP AGPTVVSIGG GKG

## Product Details

---

Cross-Reactivity:	Human
Characteristics:	Antibody reactive against mammalian transfected lysate.

## Target Details

---

Target:	DBH
Alternative Name:	DBH ( <a href="#">DBH Products</a> )
Background:	Full Gene Name: dopamine beta-hydroxylase (dopamine beta-monoxygenase) Synonyms: DBM
Gene ID:	1621
Pathways:	<a href="#">Carbohydrate Homeostasis</a>

## Application Details

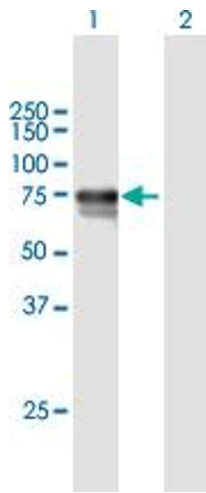
---

Application Notes:	Optimal working dilution should be determined by the investigator.
Restrictions:	For Research Use only

## Handling

---

Buffer:	In 1x PBS, pH 7.4
Handling Advice:	Aliquot to avoid repeated freezing and thawing.
Storage:	-20 °C
Storage Comment:	Store at -20°C or lower. Aliquot to avoid repeated freezing and thawing.



### Western Blotting

**Image 1.** Western Blot analysis of DBH expression in transfected 293T cell line by DBH MaxPab polyclonal antibody.

Lane 1: DBH transfected lysate(66.33 KDa).

Lane 2: Non-transfected lysate.