

Datasheet for ABIN947806  
**anti-EPYC antibody (AA 20-322)**



[Go to Product page](#)

3 Images

## Overview

Quantity:	100 µg
Target:	EPYC
Binding Specificity:	AA 20-322
Reactivity:	Human
Host:	Mouse
Clonality:	Monoclonal
Conjugate:	This EPYC antibody is un-conjugated
Application:	Western Blotting (WB), ELISA

## Product Details

Purpose:	Mouse monoclonal antibody raised against a full-length recombinant EPYC.
Immunogen:	EPYC (AAH30958, 20 a.a. ~ 322 a.a) full-length recombinant protein with GST tag. MW of the GST tag alone is 26 KDa.
Sequence:	APTLESINYD SETYDATLED LDNLYNYENI PVGKVEIEIA TVMPSGNREL LTPPPQPEKA QEEEEEEEST PRLIDGSSPQ EPEFTGVLGP HTNEDFPTCL LCTCISTTVY CDDHELDAIP PLPKNTAYFY SRFNRIKIN KNDFASLSDL KRIDLTSNLI SEIDEDAFRK LPQLRELVLR DNKIRQLPEL PTTLTFIDIS NNRLGRKGKIQ QEAFKDMYDL HHLYLTDNNL DHIPLLPEN LRALHLQNNN ILEMHEDTFC NVKNLTYIRK ALEDIRLDGN PINLSKTPQA YMCLPRLPVG SLV
Clone:	2G6
Isotype:	IgG2a
Cross-Reactivity:	Human

## Product Details

Characteristics: Antibody Reactive Against Recombinant Protein.

## Target Details

Target: EPYC

Alternative Name: EPYC (EPYC Products)

Background: Full Gene Name: epiphycan  
Synonyms: DSPG3,PGLB,Pg-Lb,SLRR3B

Gene ID: 1833

## Application Details

Application Notes: Optimal working dilution should be determined by the investigator.

Restrictions: For Research Use only

## Handling

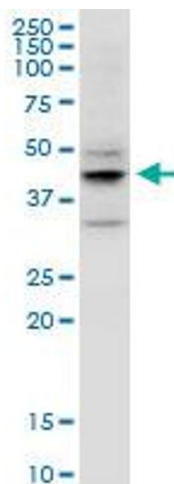
Buffer: In 1x PBS, pH 7.4

Handling Advice: Aliquot to avoid repeated freezing and thawing.

Storage: -20 °C

Storage Comment: Store at -20°C or lower. Aliquot to avoid repeated freezing and thawing.

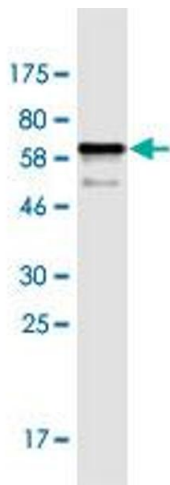
## Images



### Western Blotting

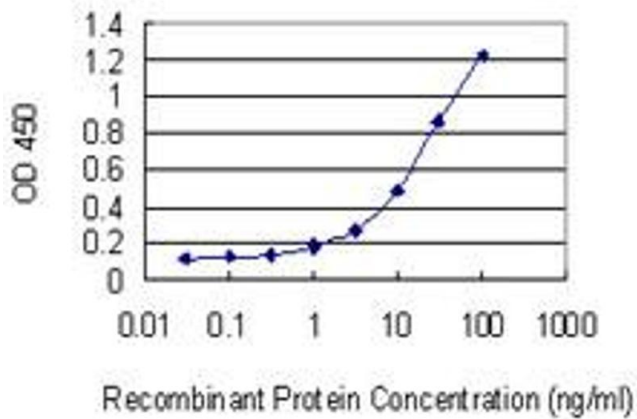
**Image 1.** EPYC monoclonal antibody (M06), clone 2G6.

Western Blot analysis of EPYC expression in MCF-7.



### Western Blotting

**Image 2.** Western Blot detection against Immunogen (58.74 KDa).



### ELISA

**Image 3.** Detection limit for recombinant GST tagged EPYC is 0.3 ng/ml as a capture antibody.