



[Go to Product page](#)

Datasheet for ABIN947820  
**anti-PHC2 antibody (AA 91-200)**

1 Image

Overview

Quantity:	100 µg
Target:	PHC2 (Phc2)
Binding Specificity:	AA 91-200
Reactivity:	Human
Host:	Mouse
Clonality:	Monoclonal
Conjugate:	This PHC2 antibody is un-conjugated
Application:	Western Blotting (WB), ELISA

Product Details

Purpose:	Mouse monoclonal antibody raised against a partial recombinant PHC2.
Immunogen:	PHC2 (NP_004418.2, 91 a.a. ~ 200 a.a) partial recombinant protein with GST tag. MW of the GST tag alone is 26 KDa.
Sequence:	PYLQESKEEG APLKCLKCELC GRVDFAYKFK RSKRFCSMAC AKRYNVGCTK RVGLFHSDRS KLQKAGAATH NRRRASKASL PPLTKDTKKQ PTGTVPLSVT AALQLTHSQE
Clone:	1F4
Isotype:	IgG2a
Cross-Reactivity:	Human
Characteristics:	Antibody Reactive Against Recombinant Protein.

## Target Details

Target:	PHC2 (Phc2)
Alternative Name:	PHC2 ( <a href="#">Phc2 Products</a> )
Background:	Full Gene Name: polyhomeotic homolog 2 (Drosophila) Synonyms: EDR2,HPH2,MGC163502,PH2
Gene ID:	1912
NCBI Accession:	<a href="#">NM_004427</a>

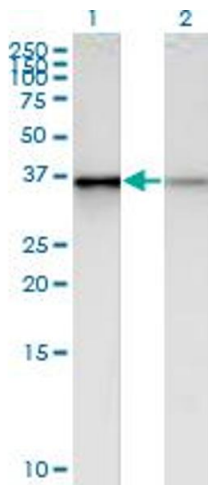
## Application Details

Application Notes:	Optimal working dilution should be determined by the investigator.
Restrictions:	For Research Use only

## Handling

Buffer:	In 1x PBS, pH 7.4
Handling Advice:	Aliquot to avoid repeated freezing and thawing.
Storage:	-20 °C
Storage Comment:	Store at -20°C or lower. Aliquot to avoid repeated freezing and thawing.

## Images



### Western Blotting

**Image 1.** Western Blot analysis of PHC2 expression in transfected 293T cell line by PHC2 monoclonal antibody (M01), clone 1F4.

Lane 1: PHC2 transfected lysate (Predicted MW: 35.8 kDa).

Lane 2: Non-transfected lysate.