



[Go to Product page](#)

Datasheet for ABIN947822

anti-Ephrin A2 antibody (AA 1-213)

1 Image

Overview

Quantity:	50 µg
Target:	Ephrin A2 (EFNA2)
Binding Specificity:	AA 1-213
Reactivity:	Human
Host:	Mouse
Clonality:	Polyclonal
Conjugate:	This Ephrin A2 antibody is un-conjugated
Application:	Western Blotting (WB)

Product Details

Purpose:	Mouse polyclonal antibody raised against a full-length human EFNA2 protein.
Immunogen:	EFNA2 (AAI48728.1, 1 a.a. ~ 213 a.a) full-length human protein.
Sequence:	MAPAQRPLLP LLLLLLPLPP PPFARAEDAA RANSDRYAVY WNRSNPRFHA GAGDDGGGYT VEVSINDYLD IYCPHYGAPL PPAERMEHYV LYMVNGEGHA SCDHRQRGFK RWECNRPAAP GGPLKFSEKF QLFTPFSLGF EFRPGHEYYY ISATPPNAVD RPCLRLKVYV RPTNETLYEA PEPIFTSNNS CSSPGGCRLF LSTIPVLWTL LGS
Cross-Reactivity:	Human
Characteristics:	Antibody reactive against mammalian transfected lysate.

Target Details

Target:	Ephrin A2 (EFNA2)
---------	-------------------

Target Details

Alternative Name:	EFNA2 (EFNA2 Products)
Background:	Full Gene Name: ephrin-A2 Synonyms: ELF-1,EPLG6,HEK7-L,LERK6
Gene ID:	1943

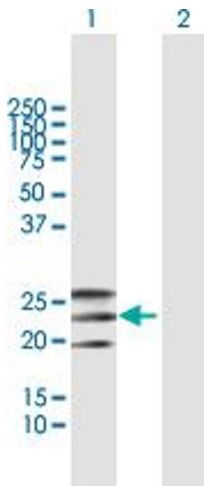
Application Details

Application Notes:	Optimal working dilution should be determined by the investigator.
Restrictions:	For Research Use only

Handling

Buffer:	In 1x PBS, pH 7.4
Handling Advice:	Aliquot to avoid repeated freezing and thawing.
Storage:	-20 °C
Storage Comment:	Store at -20°C or lower. Aliquot to avoid repeated freezing and thawing.

Images



Western Blotting

Image 1. Western Blot analysis of EFNA2 expression in transfected 293T cell line by EFNA2 MaxPab polyclonal antibody.

Lane 1: EFNA2 transfected lysate(23.43 KDa).

Lane 2: Non-transfected lysate.