



[Go to Product page](#)

Datasheet for ABIN947840
anti-EWSR1 antibody (AA 1-656)

2 Images

Overview

Quantity:	50 µg
Target:	EWSR1
Binding Specificity:	AA 1-656
Reactivity:	Human
Host:	Mouse
Clonality:	Polyclonal
Conjugate:	This EWSR1 antibody is un-conjugated
Application:	Western Blotting (WB), Immunofluorescence (IF)

Product Details

Purpose:	Mouse polyclonal antibody raised against a full-length human EWSR1 protein.
Immunogen:	EWSR1 (NP_005234.1, 1 a.a. ~ 656 a.a) full-length human protein.
Sequence:	MASTDYSTYS QAAAQQGYSA YTAQPTQGYA QTTQAYGQQS YGTYGQPTDV SYTQAQTTAT YGQTAYATSY GQPPTGYTTP TAPQAYSQPV QGYGTGAYDT TTATVTTTQA SYAAQSAYGT QPAYPAYGQQ PAATAPTRPQ DGNKPTETSQ PQSSTGGYNQ PSLGYGQSNY SYPQVPGSYP MQPVTAPPSY PPTSYSSTQP TSYDQSSYSQ NQTYGQPSSY GQQSSYGQQS SYGQQPPTSYP PPQTGYSYSA PSQYSQQSSS YGQQSSFRQD HPSSMGVYQG ESGGFSGPGE NRSMSGPDNR GRGRGGFDRG GMSRGGRRGG RGGMGSAGER GGFNKPGGPM DEGPDLDLGP PVDPEDESDN SAIYVQGLND SVTLDDLADF FKQCGVVKMN KRTGQPMIHI YLDKETGKPK GDATVSYEDP PTAKAAVEWF DGKDFQGSKL KVSLARKKPP MNSMRGGLPP REGRGMPPPL RGGPGGPGGP GGPMGRMGGR GGDRGGFPPR GPRGSRGNPS GGGNVQHRAG DWQCPNPGCG NQNFAWRTEC NQCKAPKPEG FLPPFPFPPG GDRGRGGPGG MRGGRGGLMD RGGPGGMFRG GRGGDRGGFR

Product Details

GGRGMDRGGF GGGRRGGPGG PPGPLMEQMG GRRGGRGGPG KMDKGEHRQE RRDRPY

Cross-Reactivity: Human

Characteristics: Antibody reactive against mammalian transfected lysate.

Target Details

Target: EWSR1

Alternative Name: EWSR1 ([EWSR1 Products](#))

Background: Full Gene Name: Ewing sarcoma breakpoint region 1
Synonyms: EWS

Gene ID: 2130

NCBI Accession: [NM_005243](#)

Application Details

Application Notes: Optimal working dilution should be determined by the investigator.

Restrictions: For Research Use only

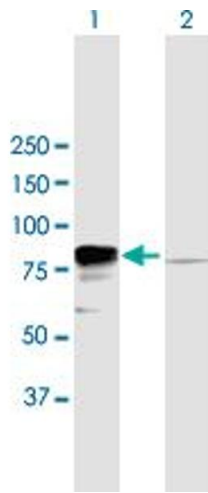
Handling

Buffer: In 1x PBS, pH 7.4

Handling Advice: Aliquot to avoid repeated freezing and thawing.

Storage: -20 °C

Storage Comment: Store at -20°C or lower. Aliquot to avoid repeated freezing and thawing.

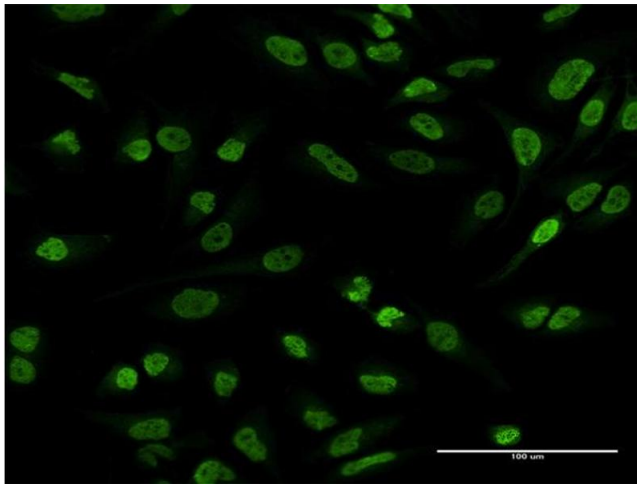


Western Blotting

Image 1. Western Blot analysis of EWSR1 expression in transfected 293T cell line by EWSR1 MaxPab polyclonal antibody.

Lane 1: EWSR1 transfected lysate(68.50 KDa).

Lane 2: Non-transfected lysate.



Immunofluorescence

Image 2. Immunofluorescence of purified MaxPab antibody to EWSR1 on HeLa cell. [antibody concentration 10 ug/ml]