



Datasheet for ABIN947841
anti-EXTL2 antibody (AA 1-330)



[Go to Product page](#)

1 Image

Overview

Quantity:	100 µg
Target:	EXTL2
Binding Specificity:	AA 1-330
Reactivity:	Human
Host:	Rabbit
Clonality:	Polyclonal
Conjugate:	This EXTL2 antibody is un-conjugated
Application:	Western Blotting (WB)

Product Details

Purpose:	Rabbit polyclonal antibody raised against a full-length human EXTL2 protein.
Immunogen:	EXTL2 (NP_001028197.1, 1 a.a. ~ 330 a.a) full-length human protein.
Sequence:	MRCCHICKLP GRVMGIRVLR LSLVVILVLL LVAGALTALL PSVKEDKMLM LRREIKSQGK STMDSFTLIM QTYNRTDLLL KLLNHYQAVP NLHKVIVVWN NIGEKAPDEL WNSLGPPIPI VIFKQQTANR MRNRLQVFPE LETNAVLMVD DDTLISTPDL VFAFSVWQQF PDQIVGFVPR KHVSTSSGIY SYGSFEMQAP GSGNGDQYSM VLIGASFFNS KYLELFQRQP AAVHALIDDT QNCDDIAMNF IIAKHIGKTS GIFVKPVNMD NLEKETNSGY SGMWHRAEHA LQRSYCINKL VNIYDSMPLR YSNIMISQFG FPYANYKRKI
Cross-Reactivity:	Human
Characteristics:	Antibody reactive against mammalian transfected lysate.

Target Details

Target:	EXTL2
Alternative Name:	EXTL2 (EXTL2 Products)
Background:	Full Gene Name: exostososes (multiple)-like 2 Synonyms: EXTR2
Gene ID:	2135
NCBI Accession:	NM_001033025

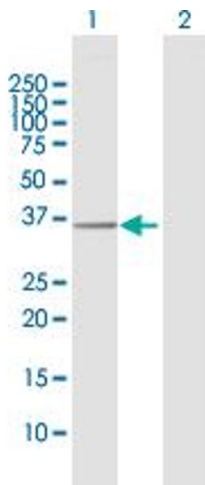
Application Details

Application Notes:	Optimal working dilution should be determined by the investigator.
Restrictions:	For Research Use only

Handling

Buffer:	In 1x PBS, pH 7.4
Handling Advice:	Aliquot to avoid repeated freezing and thawing.
Storage:	-20 °C
Storage Comment:	Store at -20°C or lower. Aliquot to avoid repeated freezing and thawing.

Images



Western Blotting

Image 1. Western Blot analysis of EXTL2 expression in transfected 293T cell line by EXTL2 MaxPab polyclonal antibody.

Lane 1: EXTL2 transfected lysate(37.50 kDa).

Lane 2: Non-transfected lysate.