



[Go to Product page](#)

Datasheet for ABIN947862

anti-Fibulin 1 antibody (AA 1-683)

2 Images

Overview

Quantity:	100 µL
Target:	Fibulin 1 (FBLN1)
Binding Specificity:	AA 1-683
Reactivity:	Human
Host:	Rabbit
Clonality:	Polyclonal
Conjugate:	This Fibulin 1 antibody is un-conjugated
Application:	Western Blotting (WB), Immunoprecipitation (IP)

Product Details

Purpose:	Rabbit polyclonal antibody raised against a full-length human FBLN1 protein.
Immunogen:	FBLN1 (AAH22497.1, 1 a.a. ~ 683 a.a) full-length human protein.
Sequence:	MERAAPSRRV PLQLLLGGL ALLAAGVDAD VLEACCADG HRMATHQKDC SLPYATESKE CRMVQEQCCH SQLEELHCAT GISLANEQDR CATPHGDNAS LEATFVKRCC HCCLLGRAAQ AQQQSCEYSL MVGYQCGQVF RACCVKSQET GDLDVGGGLQE TDKIIEVEEEE QEDPYLNDRC RGGGPKQQC RDTGDEVVCS CFVGYQLLSD GVSCEDVNEC ITGSHSCLRG ESCINTVGSF RCQRDSSCGT GYELTEDNSC KDIDECESGI HNCLPDFICQ NTLGSFRCRP KLQCKSGFIQ DALGNCIDIN ECLISAPCP IGHTCINTEG SYTCQKNVPN CGRGYHLNEE GTRCVDVDEC APPAEPCGKG HRCVNSPGSF RCECKTGYFF DGISRMCDV NEQRYPGRL CGHKCENTLG SYLCSCSVGF RLSVDGRSCE DINECSSPC SQECANVYGS YQCYCRRGYQ LSDVDGVTCE DIDECALPTG GHICSYRCIN IPGSFQCSCP SSGYRLAPNG SNCQDIDECV TGIHNCSINE TCFNIIQGGFR CLAFECPENY RRSAAATRCER LPCHENRECS KLPLRITYYH LSFPTNIQAP

Product Details

AVVFRMG PSS AVPGDSMQLA ITGGNEEGFF TTRKVSPHSG VVALTKPVPE PRDLLLTVKM
DLSRHGTVSS FVAKLFIFVS AEL

Cross-Reactivity: Human

Characteristics: Antibody reactive against mammalian transfected lysate.

Target Details

Target: Fibulin 1 (FBLN1)

Alternative Name: FBLN1 ([FBLN1 Products](#))

Background: Full Gene Name: fibulin 1
Synonyms: FBLN

Gene ID: 2192

Application Details

Application Notes: Optimal working dilution should be determined by the investigator.

Restrictions: For Research Use only

Handling

Format: Liquid

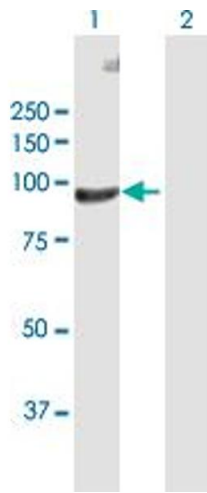
Buffer: No additive

Preservative: Without preservative

Handling Advice: Aliquot to avoid repeated freezing and thawing.

Storage: -20 °C

Storage Comment: Store at -20°C or lower. Aliquot to avoid repeated freezing and thawing.

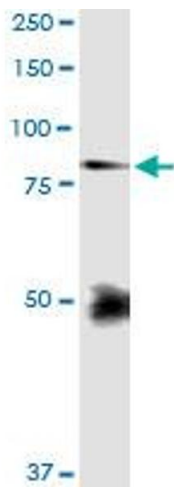


Western Blotting

Image 1. Western Blot analysis of FBLN1 expression in transfected 293T cell line by FBLN1 MaxPab polyclonal antibody.

Lane 1: FBLN1 transfected lysate(74.4 KDa).

Lane 2: Non-transfected lysate.



Immunoprecipitation

Image 2. Immunoprecipitation of FBLN1 transfected lysate using anti-FBLN1 MaxPab rabbit polyclonal antibody and Protein A Magnetic Bead , and immunoblotted with FBLN1 purified MaxPab mouse polyclonal antibody (B01P) .