



[Go to Product page](#)

Datasheet for ABIN947867
anti-FES antibody (AA 1-822)

2 Images

Overview

Quantity:	50 µg
Target:	FES
Binding Specificity:	AA 1-822
Reactivity:	Human
Host:	Mouse
Clonality:	Polyclonal
Conjugate:	This FES antibody is un-conjugated
Application:	Western Blotting (WB), Immunofluorescence (IF)

Product Details

Purpose:	Mouse polyclonal antibody raised against a full-length human FES protein.
Immunogen:	FES (ABM85456.1, 1 a.a. ~ 822 a.a) full-length human protein.
Sequence:	MGFSSELCSPP QGHGVLQMQ EAELRLLEGM RKWMAQRVKS DREYAGLLHH MSLQDSGGQS RAISPDPSPIS QSWAEITSQT EGLSRLLRQH AEDLNSGPLS KLSLLIRERQ QLRKTYSEQW QQLQELTKT HSQDIEKLKS QYRALARDSA QAKRKYQEAS KDKDRDKAKD KYVRSWLWKL AHHNRYVLGV RAAQLHHQHH HQLLLPGLLR SLQDLHEEMA CILKEILQEY LEISLQVDE VVAIHREMAA AAARIQPEAE YQGFLRQYGS APDVPPCVTF DESLLEEGEP LEPGELQLNE LTVESVQHTL TSVTDELAVA TEMVFRRQEM VTQLQQLRN EEENTHPRER VQLLGKRQVL QEALQGLQVA LCSQAKLQAQ QELLQTKLEH LGPGEPPLV LLQDDRHSST SSEQEREGR TPTLEILKSH ISGIFRPKFS LPPPLQLIPE VQKPLHEQLW YHGAIPRAEV AELLVHSGDF LVRESQGKQE YVLSVLWDGL PRHFIIQSLD NLYRLEGEFG PSIPLLDHL LSTQQPLTKK SGVVLHRAVP KDKWVLNHD LVLGEQIGRG NFGVEVFSGR RADNTLVAVK SCRETLPPDL

Product Details

KAKFLQEARI LKQYSHPNIV RLIGVCTQKQ PIYIVMELVQ GGDFLTLFRT EGARLRVKTL
LQMVGDAAAG MEYLESKCCI HRDLAARNCL VTEKNVLKIS DFGMSREEAD GVYAASGGLR
QVPVKWTAPE ALNYGRYSSE SDVWSFGILL WETFSLGASP YPNLSNQQTR EFVEKGGRLP
CPELCPDAVF RLMEQCWAYE PGQRPSFSTI YQELQSIRKR HR

Cross-Reactivity: Human

Characteristics: Antibody reactive against mammalian transfected lysate.

Target Details

Target: FES

Alternative Name: FES ([FES Products](#))

Background: Full Gene Name: feline sarcoma oncogene
Synonyms: FPS

Gene ID: 2242

Pathways: [Regulation of Leukocyte Mediated Immunity](#), [Positive Regulation of Immune Effector Process](#),
[Signaling Events mediated by VEGFR1 and VEGFR2](#)

Application Details

Application Notes: Optimal working dilution should be determined by the investigator.

Restrictions: For Research Use only

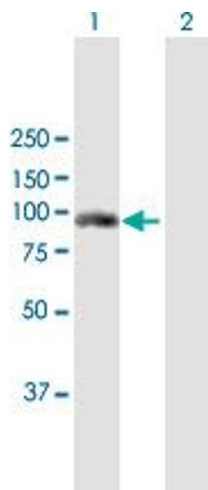
Handling

Buffer: In 1x PBS, pH 7.4

Handling Advice: Aliquot to avoid repeated freezing and thawing.

Storage: -20 °C

Storage Comment: Store at -20°C or lower. Aliquot to avoid repeated freezing and thawing.

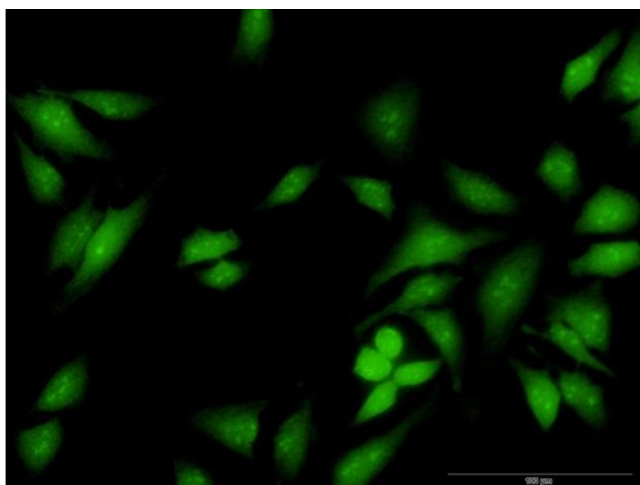


Western Blotting

Image 1. Western Blot analysis of FES expression in transfected 293T cell line by FES MaxPab polyclonal antibody.

Lane 1: FES transfected lysate(90.42 KDa).

Lane 2: Non-transfected lysate.



Immunofluorescence

Image 2. Immunofluorescence of purified MaxPab antibody to FES on HeLa cell. [antibody concentration 40 ug/ml]