



[Go to Product page](#)

Datasheet for ABIN947915
anti-GLO1 antibody (AA 1-184)

2 Images

Overview

Quantity:	100 µL
Target:	GLO1
Binding Specificity:	AA 1-184
Reactivity:	Human
Host:	Rabbit
Clonality:	Polyclonal
Conjugate:	This GLO1 antibody is un-conjugated
Application:	Western Blotting (WB), Immunoprecipitation (IP)

Product Details

Purpose:	Rabbit polyclonal antibody raised against a full-length human GLO1 protein.
Immunogen:	GLO1 (AAH15934.1, 1 a.a. ~ 184 a.a) full-length human protein.
Sequence:	MAEPQPPSGG LTDEAALSCC SDADPSTKDF LLQQTMLRVK DPKKSLDFYT RVLGMTLIQK CDFPIMKFSL YFLAYEDKND IPKEKDEKIA WALSRKATLE LTHNWGTEDD ATQSYHNGNS DPRGFGHIGI AVPDVYSACK RFEELGVKFV KKPDDGKMKG LAFIQDPDGY WIEILNPNKM ATLM
Cross-Reactivity:	Human
Characteristics:	Antibody reactive against mammalian transfected lysate.

Target Details

Target:	GLO1
---------	------

Target Details

Alternative Name:	GLO1 (GLO1 Products)
Background:	Full Gene Name: glyoxalase I Synonyms: GLOD1, GLYI
Gene ID:	2739
NCBI Accession:	NM_006708

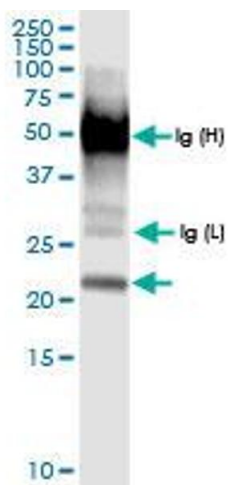
Application Details

Application Notes:	Optimal working dilution should be determined by the investigator.
Restrictions:	For Research Use only

Handling

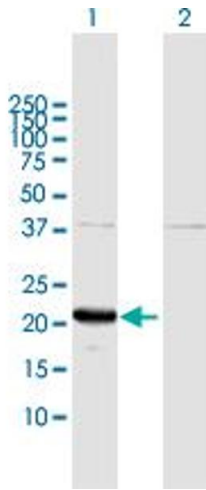
Format:	Liquid
Buffer:	No additive
Preservative:	Without preservative
Handling Advice:	Aliquot to avoid repeated freezing and thawing.
Storage:	-20 °C
Storage Comment:	Store at -20°C or lower. Aliquot to avoid repeated freezing and thawing.

Images



Immunoprecipitation

Image 1. Immunoprecipitation of GLO1 transfected lysate using anti-GLO1 MaxPab rabbit polyclonal antibody and Protein A Magnetic Bead , and immunoblotted with GLO1 MaxPab rabbit polyclonal antibody (D01) .



Western Blotting

Image 2. Western Blot analysis of GLO1 expression in transfected 293T cell line by GLO1 MaxPab polyclonal antibody.

Lane 1: GLO1 transfected lysate(20.70 kDa).

Lane 2: Non-transfected lysate.