



[Go to Product page](#)

Datasheet for ABIN947933  
**anti-GPS2 antibody (AA 1-327)**

1 Image

Overview

Quantity:	100 µg
Target:	GPS2
Binding Specificity:	AA 1-327
Reactivity:	Human
Host:	Rabbit
Clonality:	Polyclonal
Conjugate:	This GPS2 antibody is un-conjugated
Application:	Western Blotting (WB)

Product Details

Purpose:	Rabbit polyclonal antibody raised against a full-length human GPS2 protein.
Immunogen:	GPS2 (NP_004480.1, 1 a.a. ~ 327 a.a) full-length human protein.
Sequence:	MPALLERPKL SNAMARALHR HIMMERERKR QEEEEVDKMM EQKMKEEQER RKKKEMEERM SLEETKEQIL KLEEKLLALQ EEKHQLFLQL KKVLHEEEKR RRKEQSDLTT LTSAAYQQSL TVHTGTHLLS MQGSPGGHNR PGTLMADRA KQMFQPQLT TRHYVGSAAA FAGTPEHGQF QGSPGGAYGT AQPPPHYGPT QPAYSPSQQ L RAPSAPAVQ YLSQPQPQPY AVHGHEFQPTQ TGFLQPGGAL SLQKQMEHAN QQTGFSDSSS LRPMHPQALH PAPGLLASPQ LPVQMQPAGK SGFAATSQPG PRLPFIQHSQ NPRFYHK
Cross-Reactivity:	Human
Characteristics:	Antibody reactive against mammalian transfected lysate.

## Target Details

Target:	GPS2
Alternative Name:	GPS2 ( <a href="#">GPS2 Products</a> )
Background:	Full Gene Name: G protein pathway suppressor 2 Synonyms: AMF-1,MGC104294,MGC119287,MGC119288,MGC119289
Gene ID:	2874
NCBI Accession:	<a href="#">NM_004489</a>

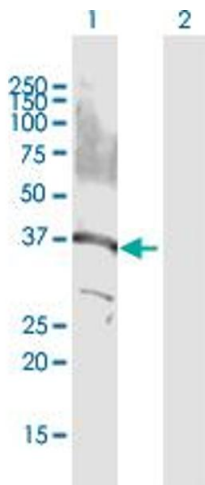
## Application Details

Application Notes:	Optimal working dilution should be determined by the investigator.
Restrictions:	For Research Use only

## Handling

Buffer:	In 1x PBS, pH 7.4
Handling Advice:	Aliquot to avoid repeated freezing and thawing.
Storage:	-20 °C
Storage Comment:	Store at -20°C or lower. Aliquot to avoid repeated freezing and thawing.

## Images



### Western Blotting

**Image 1.** Western Blot analysis of GPS2 expression in transfected 293T cell line by GPS2 MaxPab polyclonal antibody.

Lane 1: GPS2 transfected lysate(36.70 KDa).

Lane 2: Non-transfected lysate.