



[Go to Product page](#)

Datasheet for ABIN947956

## anti-GUCY2D antibody (AA 521-630)

### 3 Images

#### Overview

Quantity:	100 µg
Target:	GUCY2D
Binding Specificity:	AA 521-630
Reactivity:	Human
Host:	Mouse
Clonality:	Monoclonal
Conjugate:	This GUCY2D antibody is un-conjugated
Application:	Western Blotting (WB), ELISA, Immunofluorescence (IF)

#### Product Details

Purpose:	Mouse monoclonal antibody raised against a partial recombinant GUCY2D.
Immunogen:	GUCY2D (NP_000171, 521 a.a. ~ 630 a.a) partial recombinant protein with GST tag. MW of the GST tag alone is 26 KDa.
Sequence:	RKVAQGSRSS LGARMSDIR SGPSQHLDSP NIGVYEGDRV WLKKFPGDQH IAIRPATKTA FSKLQELRHE NVALYLGLFL ARGAECPAAL WEGNLAVVSE HCTRGLQDL
Clone:	X1
Isotype:	IgG1
Cross-Reactivity:	Human
Characteristics:	Antibody Reactive Against Recombinant Protein.

## Target Details

Target:	GUCY2D
Alternative Name:	GUCY2D ( <a href="#">GUCY2D Products</a> )
Background:	Full Gene Name: guanylate cyclase 2D, membrane (retina-specific) Synonyms: CORD5,CORD6,CYGD,GUC1A4,GUC2D,LCA,LCA1,RETGC-1,ROS-GC1,retGC
Gene ID:	3000
NCBI Accession:	<a href="#">NM_000180</a>
Pathways:	<a href="#">Regulation of G-Protein Coupled Receptor Protein Signaling, Phototransduction</a>

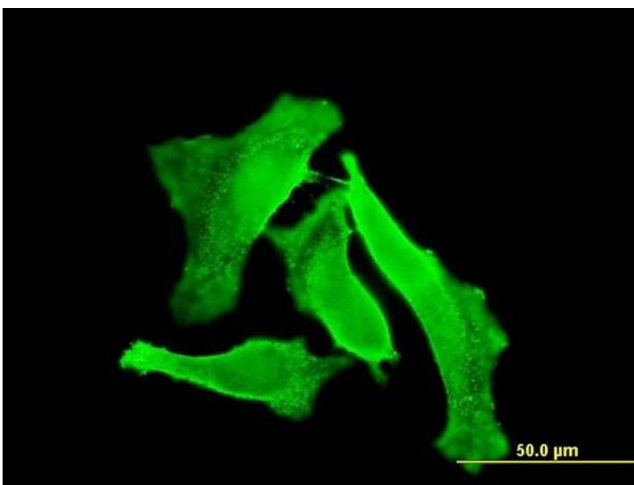
## Application Details

Application Notes:	Optimal working dilution should be determined by the investigator.
Restrictions:	For Research Use only

## Handling

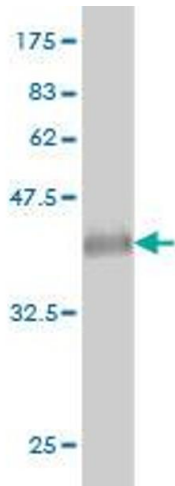
Buffer:	In 1x PBS, pH 7.4
Handling Advice:	Aliquot to avoid repeated freezing and thawing.
Storage:	-20 °C
Storage Comment:	Store at -20°C or lower. Aliquot to avoid repeated freezing and thawing.

## Images



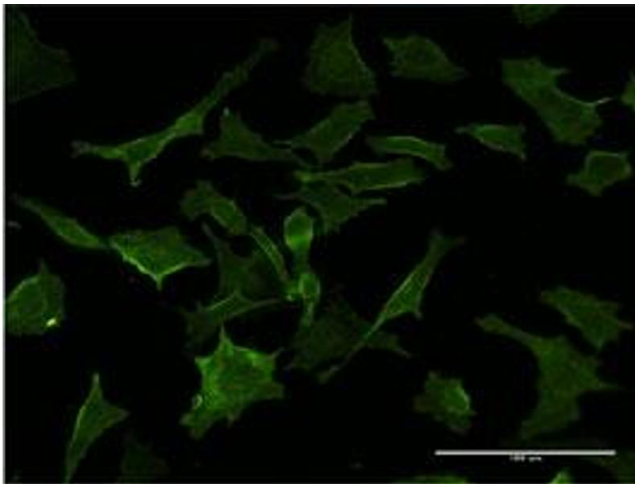
### Immunofluorescence

**Image 1.** Immunofluorescence of monoclonal antibody to GUCY2D on HeLa cell. [antibody concentration 10 ug/ml]



### Western Blotting

**Image 2.** Western Blot detection against Immunogen (37.73 KDa).



### Immunofluorescence

**Image 3.** Immunofluorescence of monoclonal antibody to GUCY2D on HeLa cell. (antibody concentration 10  $\mu$ g/mL)