



[Go to Product page](#)

Datasheet for ABIN948014

## anti-IFNA1 antibody (AA 1-189)

### 2 Images

#### Overview

Quantity:	100 µL
Target:	IFNA1
Binding Specificity:	AA 1-189
Reactivity:	Human
Host:	Rabbit
Clonality:	Polyclonal
Conjugate:	This IFNA1 antibody is un-conjugated
Application:	Western Blotting (WB), Immunoprecipitation (IP)

#### Product Details

Purpose:	Rabbit polyclonal antibody raised against a full-length human IFNA1 protein.
Immunogen:	IFNA1 (NP_076918.1, 1 a.a. ~ 189 a.a) full-length human protein.
Sequence:	MASPFALLMV LVVLSCKSSC SLGCDLPETH SLDNRRTLML LAQMSRISPS SCLMDRHDFG FPQEEFDGNQ FQKAPAISVL HELIQQIFNL FTKDSSAAW DEDLLDKFCT ELYQQLNLDL ACVMQEERVG ETPLMNADSI LAVKKYFRRI TLYLTEKKYS PCAWEVVRAE IMRSLSLSTN LQERLRRKE
Cross-Reactivity:	Human
Characteristics:	Antibody reactive against mammalian transfected lysate.

#### Target Details

Target:	IFNA1
---------	-------

## Target Details

Alternative Name:	IFNA1 ( <a href="#">IFNA1 Products</a> )
Background:	Full Gene Name: interferon, alpha 1 Synonyms: IFL,IFN,IFN-ALPHA,IFNA13,IFNA@,MGC138207,MGC138505,MGC138507
Gene ID:	3439
NCBI Accession:	<a href="#">NM_024013</a>
Pathways:	<a href="#">JAK-STAT Signaling</a> , <a href="#">Hepatitis C</a>

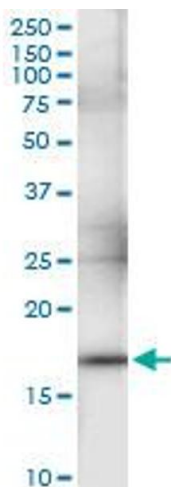
## Application Details

Application Notes:	Optimal working dilution should be determined by the investigator.
Restrictions:	For Research Use only

## Handling

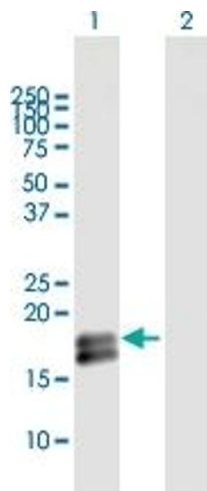
Format:	Liquid
Buffer:	No additive
Preservative:	Without preservative
Handling Advice:	Aliquot to avoid repeated freezing and thawing.
Storage:	-20 °C
Storage Comment:	Store at -20°C or lower. Aliquot to avoid repeated freezing and thawing.

## Images



### Immunoprecipitation

**Image 1.** Immunoprecipitation of IFNA1 transfected lysate using anti-IFNA1 MaxPab rabbit polyclonal antibody and Protein A Magnetic Bead , and immunoblotted with IFNA1 purified MaxPab mouse polyclonal antibody (B01P) .



### Western Blotting

**Image 2.** Western Blot analysis of IFNA1 expression in transfected 293T cell line by IFNA1 MaxPab polyclonal antibody.

Lane 1: IFNA1 transfected lysate(21.7 KDa).

Lane 2: Non-transfected lysate.