



[Go to Product page](#)

Datasheet for ABIN948032
anti-IL16 antibody (AA 1-454)

1 Image

Overview

| | |
|----------------------|-------------------------------------|
| Quantity: | 50 µg |
| Target: | IL16 |
| Binding Specificity: | AA 1-454 |
| Reactivity: | Human |
| Host: | Mouse |
| Clonality: | Polyclonal |
| Conjugate: | This IL16 antibody is un-conjugated |
| Application: | Western Blotting (WB) |

Product Details

| | |
|-------------------|--|
| Purpose: | Mouse polyclonal antibody raised against a full-length human IL16 protein. |
| Immunogen: | IL16 (AAH40272.1, 1 a.a. ~ 454 a.a) full-length human protein. |
| Sequence: | MESHSRAGKS RKSAKFRSIS RSLMLCNAKT SDDGSSPDEK YPDPFEISLA QGKEGIFHSS VQLADTSEAG PSSVPLDALA SEAAQLQAAG NDRGKTCRRI FFMKESSTAS SREKPGKLEA QSSNFLPKA CHQRARSNST SVNPYCTREI DFPMTKKSAA PTDRQPYSLC SNRKSLSQQL DCPAGKAAGT SRPTRSLSTA QLVQPSGGLQ ASVISNIVLM KGQAKGLGFS IVGGKDSIYG PIGIYVKTIF AGGAAAADGR LQEGDEILEL NGESMAGLTH QDALQKFKQA KKGLLTLTVR TRLTAPPSLC SHLSPPLCRS LSSSTCITKD SSSFALESPTS APISTAKPNY RIMVEVSLQK EAGVGLGIGL CSVPYFQCIS GIFVHTLSPG SVAHLDGRLR CGDEIVEISD SPVHCLTLNE VYTILSHCDP GPVSIIVSRH PDPQKEEMEA QEVK |
| Cross-Reactivity: | Human |

Product Details

Characteristics: Antibody reactive against mammalian transfected lysate.

Target Details

Target: IL16

Alternative Name: IL16 ([IL16 Products](#))

Background: Full Gene Name: interleukin 16 (lymphocyte chemoattractant factor)
Synonyms: FLJ16806,FLJ42735,FLJ44234,HsT19289,IL-16,LCF,prIL-16

Gene ID: 3603

Application Details

Application Notes: Optimal working dilution should be determined by the investigator.

Restrictions: For Research Use only

Handling

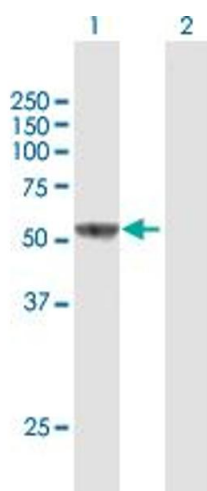
Buffer: In 1x PBS, pH 7.4

Handling Advice: Aliquot to avoid repeated freezing and thawing.

Storage: -20 °C

Storage Comment: Store at -20°C or lower. Aliquot to avoid repeated freezing and thawing.

Images



Western Blotting

Image 1. Western Blot analysis of IL16 expression in transfected 293T cell line by IL16 MaxPab polyclonal antibody.

Lane 1: IL16 transfected lysate(49.94 KDa).

Lane 2: Non-transfected lysate.