

Datasheet for ABIN948045  
**anti-ISLR antibody (AA 1-428)**



[Go to Product page](#)

2 Images

Overview

Quantity:	50 µg
Target:	ISLR
Binding Specificity:	AA 1-428
Reactivity:	Human
Host:	Mouse
Clonality:	Polyclonal
Conjugate:	This ISLR antibody is un-conjugated
Application:	Western Blotting (WB)

Product Details

Purpose:	Mouse polyclonal antibody raised against a full-length human ISLR protein.
Immunogen:	ISLR (ABW03309.1, 1 a.a. ~ 428 a.a) full-length human protein.
Sequence:	<p>MQELHLLWWA LLLGLAQACP EPCDCGEKYG FQIADCAYRD LESVPPGFPA NVTTLSLSAN                      RLPGLPEGAF REVPLLQSLW LAHNEIRTVA AGALASLSHL KSLDLSHNL I SDFAWSDLHN                      LSALQLLKMD SNELT FIPRD AFRSLRALRS LQLNHNRLHT LAEGTFTPLT ALSHLQINEN                      PFDCTCGIVW LKTWALTTAV SIPEQDNIAC TSPHVLKGTP LSRLPPLPCS APSVQLSYQP                      SQDGAELRPG FVLALHCDVD GQPAPQLHWH IQIPSGIVEI TSPNVGTDGR ALPGTPVASS                      QPRFQAFANG SLLIPDFGKL EEGTYSCLAT NELGSAESSV DVALATPGEG GEDTLGRRFH                      GKAVEGKGCY TVDNEVQPSG PEDNVVVIYL SRAGNPEAAV AEGVPGQLPP GLLLLGQSLL                      LFFFLTSTF</p>
Cross-Reactivity:	Human

## Product Details

Characteristics: Antibody reactive against mammalian transfected lysate.

## Target Details

Target: ISLR

Alternative Name: ISLR ([ISLR Products](#))

Background: Full Gene Name: immunoglobulin superfamily containing leucine-rich repeat  
Synonyms: HsT17563,MGC102816

Gene ID: 3671

## Application Details

Application Notes: Optimal working dilution should be determined by the investigator.

Restrictions: For Research Use only

## Handling

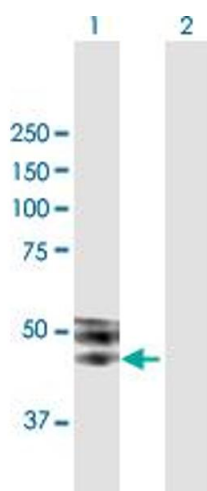
Buffer: In 1x PBS, pH 7.4

Handling Advice: Aliquot to avoid repeated freezing and thawing.

Storage: -20 °C

Storage Comment: Store at -20°C or lower. Aliquot to avoid repeated freezing and thawing.

## Images

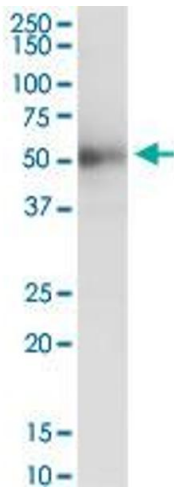


### Western Blotting

**Image 1.** Western Blot analysis of ISLR expression in transfected 293T cell line by ISLR MaxPab polyclonal antibody.

Lane 1: ISLR transfected lysate(47.08 KDa).

Lane 2: Non-transfected lysate.



### Western Blotting

**Image 2.** ISLR MaxPab polyclonal antibody. Western Blot analysis of ISLR expression in human stomach.