

Datasheet for ABIN948048  
**anti-ITGB6 antibody (AA 1-788)**



[Go to Product page](#)

2 Images

Overview

Quantity:	100 µL
Target:	ITGB6
Binding Specificity:	AA 1-788
Reactivity:	Human
Host:	Rabbit
Clonality:	Polyclonal
Conjugate:	This ITGB6 antibody is un-conjugated
Application:	Western Blotting (WB), Immunoprecipitation (IP)

Product Details

Purpose:	Rabbit polyclonal antibody raised against a full-length human ITGB6 protein.
Immunogen:	ITGB6 (NP_000879.2, 1 a.a. ~ 788 a.a) full-length human protein.
Sequence:	MGIELLCLFF LFLGRNDHVQ GGCALGGAET CEDCLLIGPQ CAWCAQENFT HPSGVGERCD TPANLLAKGC QLNFIENPVS QVEILKNKPL SVGRQKNSSD IVQIAPQSLI LKLRPGGAQT LQVHVRQTED YPVDLYYLM DLSASMDDDLN TIKELGSRLS KEMSKLTSNF RLGFGSFVEK PVSPFVKTTP EEIANPCSSI PYFCLPTFGF KHILPLTND AERFNEIVKNQ KISANIDTPE GGFDAIMQAA VCCEKIGWRN DSLHLLVFVS DADSHFGMDS KLAGIVIPND GLCHLDSKNE YSMSTVLEYP TIGQLIDKLV QNNVLLIFAV TQEQVHLYEN YAKLIPGATV GLLQKDSGNI LQLIISAYEE LRSEVELEVL GDTEGLNLSF TAICNNGTLF QHQKCKSHMK VGDTASFVST VNIPH CERRS RHIIKPVGL GDALELLVSP ECNDCDCQKEV EVNSSKCHHG NGSFQCGVCA CHPGHMGPRC ECGEDMLSTD SCKEAPDHPS CSGRGDCYCG QCICHLSPYG NIYGPYCQCD NFSCVRHKGL LCGNGDCDC GECVCRSGWT GEYCNCNTTST DSCVSEDGVL CSGRGDCVCG

## Product Details

---

KCVCTNPGAS GPTCERCPTC GDPCNSKRSC IECHLSAAGQ AREECVDKCK LAGATISEEE  
DFSKDGSVSC SLQGENECLI TFLITTDNEG KTIHSINEK DCPKPPNIPM IMLGVSLAIL  
LIGVLLCIW KLLVSFHDRK EVAKFEAERS KAKWQTGTNP LYRGSTSTFK NVTYKHREKQ  
KVDLSTDC

Cross-Reactivity: Human

Characteristics: Antibody reactive against mammalian transfected lysate.

## Target Details

---

Target: ITGB6

Alternative Name: ITGB6 ([ITGB6 Products](#))

Background: Full Gene Name: integrin, beta 6  
Synonyms:

Gene ID: 3694

NCBI Accession: [NM\\_000888](#)

## Application Details

---

Application Notes: Optimal working dilution should be determined by the investigator.

Restrictions: For Research Use only

## Handling

---

Format: Liquid

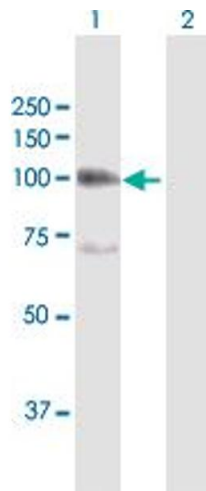
Buffer: No additive

Preservative: Without preservative

Handling Advice: Aliquot to avoid repeated freezing and thawing.

Storage: -20 °C

Storage Comment: Store at -20°C or lower. Aliquot to avoid repeated freezing and thawing.

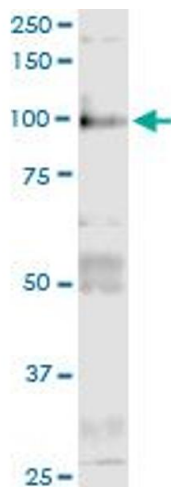


### Western Blotting

**Image 1.** Western Blot analysis of ITGB6 expression in transfected 293T cell line by ITGB6 MaxPab polyclonal antibody.

Lane 1: ITGB6 transfected lysate(85.9 KDa).

Lane 2: Non-transfected lysate.



### Immunoprecipitation

**Image 2.** Immunoprecipitation of ITGB6 transfected lysate using anti-ITGB6 MaxPab rabbit polyclonal antibody and Protein A Magnetic Bead , and immunoblotted with ITGB6 purified MaxPab mouse polyclonal antibody (B01P) .