



[Go to Product page](#)

Datasheet for ABIN948057

## anti-KISS1 antibody (AA 1-138)

### 1 Image

#### Overview

Quantity:	50 µg
Target:	KISS1
Binding Specificity:	AA 1-138
Reactivity:	Human
Host:	Mouse
Clonality:	Polyclonal
Conjugate:	This KISS1 antibody is un-conjugated
Application:	Western Blotting (WB)

#### Product Details

Purpose:	Mouse polyclonal antibody raised against a full-length human KISS1 protein.
Immunogen:	KISS1 (NP_002247.3, 1 a.a. ~ 138 a.a) full-length human protein.
Sequence:	MNSLVSQQL LFLCATHFGE PLEKVASVGN SRPTGQQLS LGLLAPGEQS LPCTERKPAA TARLSRRGTS LSPPPESSGS PQQPGLSAPH SRQIPAPQGA VLVQREKDLN NYNWNFSGLR FGKREAAPGN HGRSAGRG
Cross-Reactivity:	Human
Characteristics:	Antibody reactive against mammalian transfected lysate.

#### Target Details

Target:	KISS1
---------	-------

## Target Details

Alternative Name:	KISS1 ( <a href="#">KISS1 Products</a> )
Background:	Full Gene Name: KiSS-1 metastasis-suppressor Synonyms: KiSS-1,METASTIN,MGC39258
Gene ID:	3814
NCBI Accession:	<a href="#">NM_002256</a>
Pathways:	<a href="#">Positive Regulation of Peptide Hormone Secretion</a>

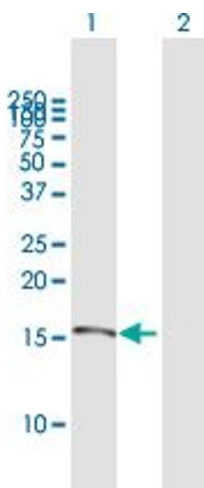
## Application Details

Application Notes:	Optimal working dilution should be determined by the investigator.
Restrictions:	For Research Use only

## Handling

Buffer:	In 1x PBS, pH 7.4
Handling Advice:	Aliquot to avoid repeated freezing and thawing.
Storage:	-20 °C
Storage Comment:	Store at -20°C or lower. Aliquot to avoid repeated freezing and thawing.

## Images



### Western Blotting

**Image 1.** Western Blot analysis of KISS1 expression in transfected 293T cell line by KISS1 MaxPab polyclonal antibody.

Lane 1: KISS1 transfected lysate(14.70 kDa).

Lane 2: Non-transfected lysate.