



Datasheet for ABIN948063  
**anti-Keratin 6B antibody (AA 1-564)**



[Go to Product page](#)

3 Images

Overview

Quantity:	100 µg
Target:	Keratin 6B (KRT6B)
Binding Specificity:	AA 1-564
Reactivity:	Human
Host:	Mouse
Clonality:	Monoclonal
Conjugate:	This Keratin 6B antibody is un-conjugated
Application:	Western Blotting (WB), ELISA

Product Details

Purpose:	Mouse monoclonal antibody raised against a full-length recombinant KRT6B.
Immunogen:	KRT6B (AAH34535, 1 a.a. ~ 564 a.a) full-length recombinant protein with GST tag. MW of the GST tag alone is 26 KDa.
Sequence:	MASTSTTIRS HSSRRGFSA NSARLPGVSR SGFSSISVSR SRGSGGLGGA CGGAGFGSRS LYGLGGSKRI SIGGGSCAIS GYGSRAGGS YGFGGAGSGF GFGGGAGIGF GLGGGAGLAG GFGGPGFPVC PPGGIQEVTV NQSLLTPLNL QIDPAIQRVR AEEREQIKTL NKFASFIDK VRFLEQQNKV LDTKWTLTLLQE QGTKTVRQNL EPLFEQYINN LRRQLDNIVG ERGRLDSELR NMQDLVEDLK NKYEDEINKR TAAENEFVTL KKDVDAAAYMN KVELQAKADT LTDEINFLRA LYDAELSQMQ THISDTSVVL SMDNRRNLDL DSIIAEVKAQ YEEIAQRSRA EAESWYQTKY EELQITAGRH GDDLRLNTKQE IAEINRMIQR LRSEIDHVKK QCANLQAAIA DAEQRGEMAL KDAKNKLEGL EDALQKAKQD LARLLKEYQE LMNVKLALDV EIATYRKLLE GEECRLNGEG VGQVNISVVQ STVSSGYGGA SGVGSGLGLG GGSSYSYGS LGVGGGFSSS SGRATGGGLS

## Product Details

---

SVGGGSSTIK YTTTSSSSRK SYKH

Clone: 4G9

Isotype: IgG2a

Cross-Reactivity: Human

Characteristics: Antibody Reactive Against Recombinant Protein.

## Target Details

---

Target: Keratin 6B (KRT6B)

Alternative Name: KRT6B ([KRT6B Products](#))

Background: Full Gene Name: keratin 6B  
Synonyms: CK6B,K6B,KRTL1,PC2

Gene ID: 3854

## Application Details

---

Application Notes: Optimal working dilution should be determined by the investigator.

Restrictions: For Research Use only

## Handling

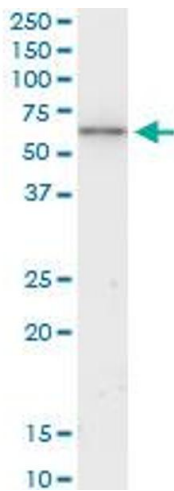
---

Buffer: In 1x PBS, pH 7.4

Handling Advice: Aliquot to avoid repeated freezing and thawing.

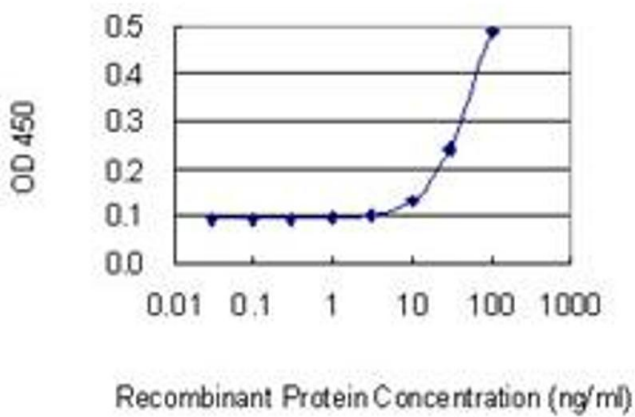
Storage: -20 °C

Storage Comment: Store at -20°C or lower. Aliquot to avoid repeated freezing and thawing.



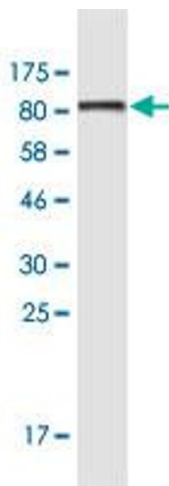
### Western Blotting

**Image 1.** KRT6B monoclonal antibody (M01), clone 4G9. Western Blot analysis of KRT6B expression in A-431.



### ELISA

**Image 2.** Detection limit for recombinant GST tagged KRT6B is 3 ng/ml as a capture antibody.



### Western Blotting

**Image 3.** Western Blot detection against Immunogen (87.78 kDa).