



[Go to Product page](#)

Datasheet for ABIN948069

## anti-KRT12 antibody (AA 1-494)

### 1 Image

#### Overview

Quantity:	50 µg
Target:	KRT12
Binding Specificity:	AA 1-494
Reactivity:	Human
Host:	Mouse
Clonality:	Polyclonal
Conjugate:	This KRT12 antibody is un-conjugated
Application:	Western Blotting (WB)

#### Product Details

Purpose:	Mouse polyclonal antibody raised against a full-length human KRT12 protein.
Immunogen:	KRT12 (AAI56642.1, 1 a.a. ~ 494 a.a) full-length human protein.
Sequence:	MDLSNNTMSL SVRTPGLSRR LSSQSVIGRP RGMSASSVGS GYGGSAGFGF ASCGGGFSAASMFSSSSGFG GSGSSMAGG LGAGYGRALG GGSFGGLGMG FGGSPGGGSL GILSGNDGGLLSGSEKETMQ NLNDRLASYL DKVRALEEAN TELENKIREW YETRGTGTAD ASQSDYSKYYPLIEDLRNKI ISASIGNAQL LLQIDNARLA AEDFRMKYEN ELALRQGVEA DINGLRRVLD ELTLTRTDLE MQIESLNEEL AYMKNHEDE LQSFVGGPG EVSVM DAAP GVDLTRLNDMRAQYETIAE QNRKDAEAWF IEKSGELRKE ISTNTEQLQS SKSEVTLRR AFQNLEIELQSQLAMKKSLE DSLAEAEGDY CAQLSQVQQL ISNLEAQLLQ VRADAERQNV DHQRLLNVKARLELEIETYR RLLDGEAQGD GLEESLFVTD SKSQAQSTDS SKDPTKTRKI KTVVQEMVNGEVSSQVQEI EELM

## Product Details

Cross-Reactivity:	Human
Characteristics:	Antibody reactive against mammalian transfected lysate.

## Target Details

Target:	KRT12
Alternative Name:	KRT12 ( <a href="#">KRT12 Products</a> )
Background:	Full Gene Name: keratin 12 Synonyms: K12
Gene ID:	3859

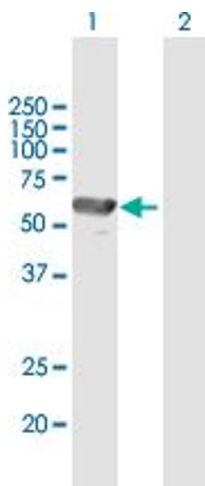
## Application Details

Application Notes:	Optimal working dilution should be determined by the investigator.
Restrictions:	For Research Use only

## Handling

Buffer:	In 1x PBS, pH 7.4
Handling Advice:	Aliquot to avoid repeated freezing and thawing.
Storage:	-20 °C
Storage Comment:	Store at -20°C or lower. Aliquot to avoid repeated freezing and thawing.

## Images



### Western Blotting

**Image 1.** Western Blot analysis of KRT12 expression in transfected 293T cell line by KRT12 MaxPab polyclonal antibody.

Lane 1: KRT12 transfected lysate(54.34 KDa).

Lane 2: Non-transfected lysate.